

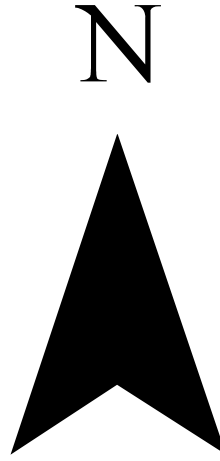
Buildable Parcels in Fairhaven

fairhaven_buildout_jun2010B

Prepared by the BBNEP
draft: 29 November 2011

CAT_DESC

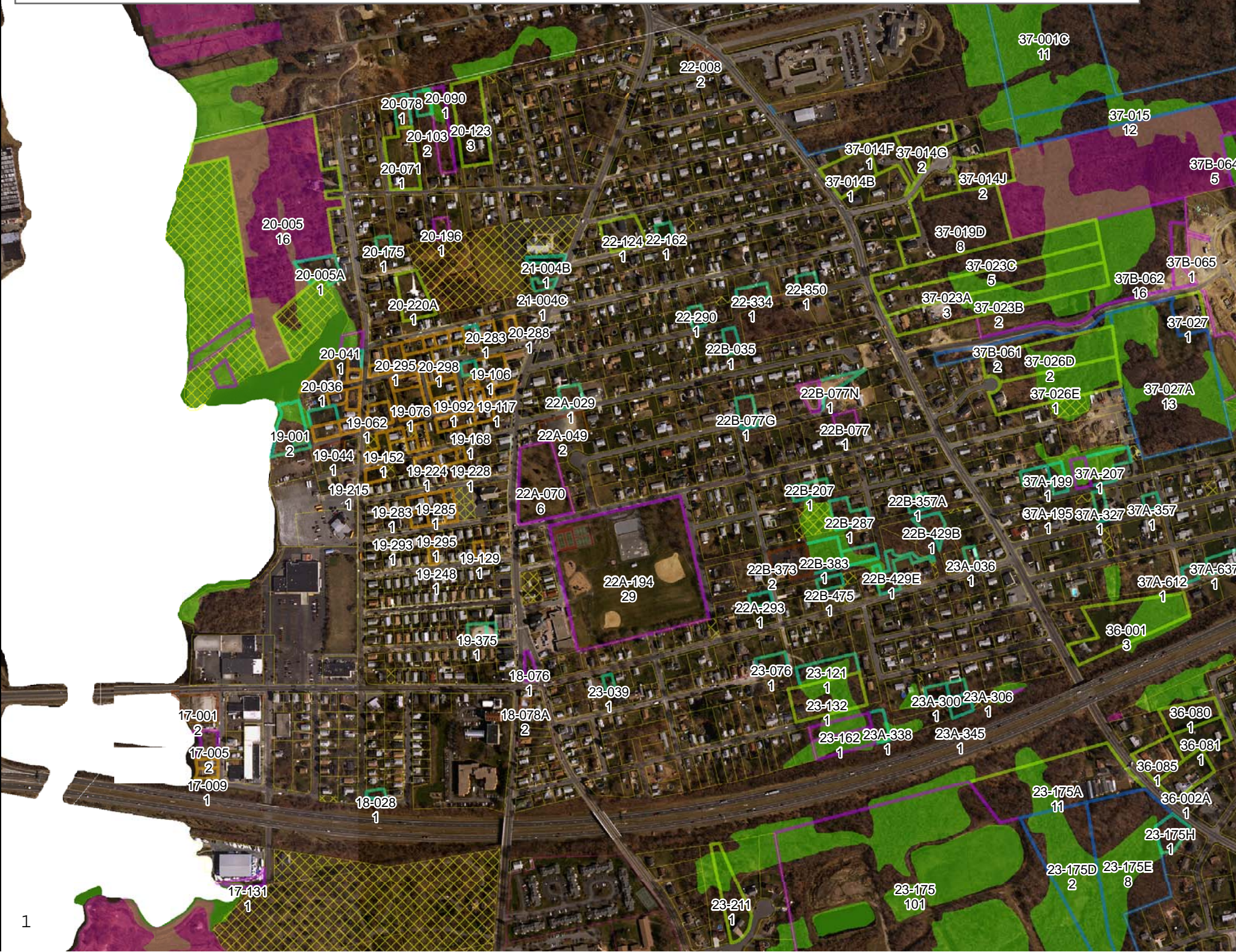
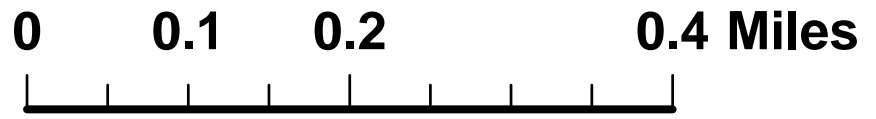
- Apartment Buildings
 - Built on & Built out
 - Built, not builtout, not subdividable
 - Built, not builtout, subdividable
 - Commercial Buildings with Apts
 - Commercial Buildings without Apts
 - Not Developable
 - Not built, not subdividable
 - Not built, subdividable
 - Town-owned unprotected open space
 - Various Others
 - all_bb_open_space_sept11
 - fair_wetlands_onlybvwtypes
- openwater-bb



Buzzards Bay



National Estuary Program





13-022
1

15-043
3

16-031
2
16-032
2

16-033
2

16-039
6

14-010
1

14-172
1

14-013
1

14-183
1

14-202
1

23-176D
1

23-175
101

23-175D
2

24-003A
2

24-002
9

24-007
10

24-001D
1

24-019
3

24-292
3

24-093
1

24-096
1

24-086
1

24-121
7

13-055
1

14-023
2

14-154
1

24-193
3

24-238
1

12-084
2

24-226
1

12-070
1

12-010
2

12-012
3

12-012A
4

12-013A
3

12-015
5

12-015A
1

12-204
1

12-016A
2

12-016
2

12-023
1

12-177
1

11-039
1

11-001
2

11-014
2

11-040
1

11-019
1

11-061
33

11-095
1

11-008
2

11-06E
2

11-025
1

11-010
4

11-011
2

11-153
1

11-064
1

11-066
1

11-012
2

11-036
2

11-050
1

09-014
2

09-020
1

09-040
1

10-095
1

09-016
2

09-028
2

09-124
1

09-018
2

09-057
1

09-074
2

09-086
2

09-065
2

09-087
2

07-025
2

07-037
1

08-051
1

08-068
5

07-024
1

07-047
2

07-061
1

07-051A
2

07-063
1

07-068
1

07-052
2

07-015A
1

07-016
1

05-003
1

05-004
2

44-001
6

25-097
1

25-103
1

25-030A
8

25-062C
1

25-063
1

25-065C
2

25-060A
1

10-116B
1

27-004D
1

27-065
1

10-165
1

27-053
1

27-053
2

08-025
2

08-070
1

08-070
2

08-051
1

08-068
5

07-051A
2

07-063
1

07-068
1

07-052
2

07-015A
1

07-016
1

05-003
1

05-004
2

06-035
1

06-125
1

04-033
1

04-166
1

03-018
1

04-007
1

03-003
1

03-004
1

03-006
2

03-105
1

03-010
2

03-011
2

01-009
3

01-011
1

01-012
4

01-013
1

04-155
1

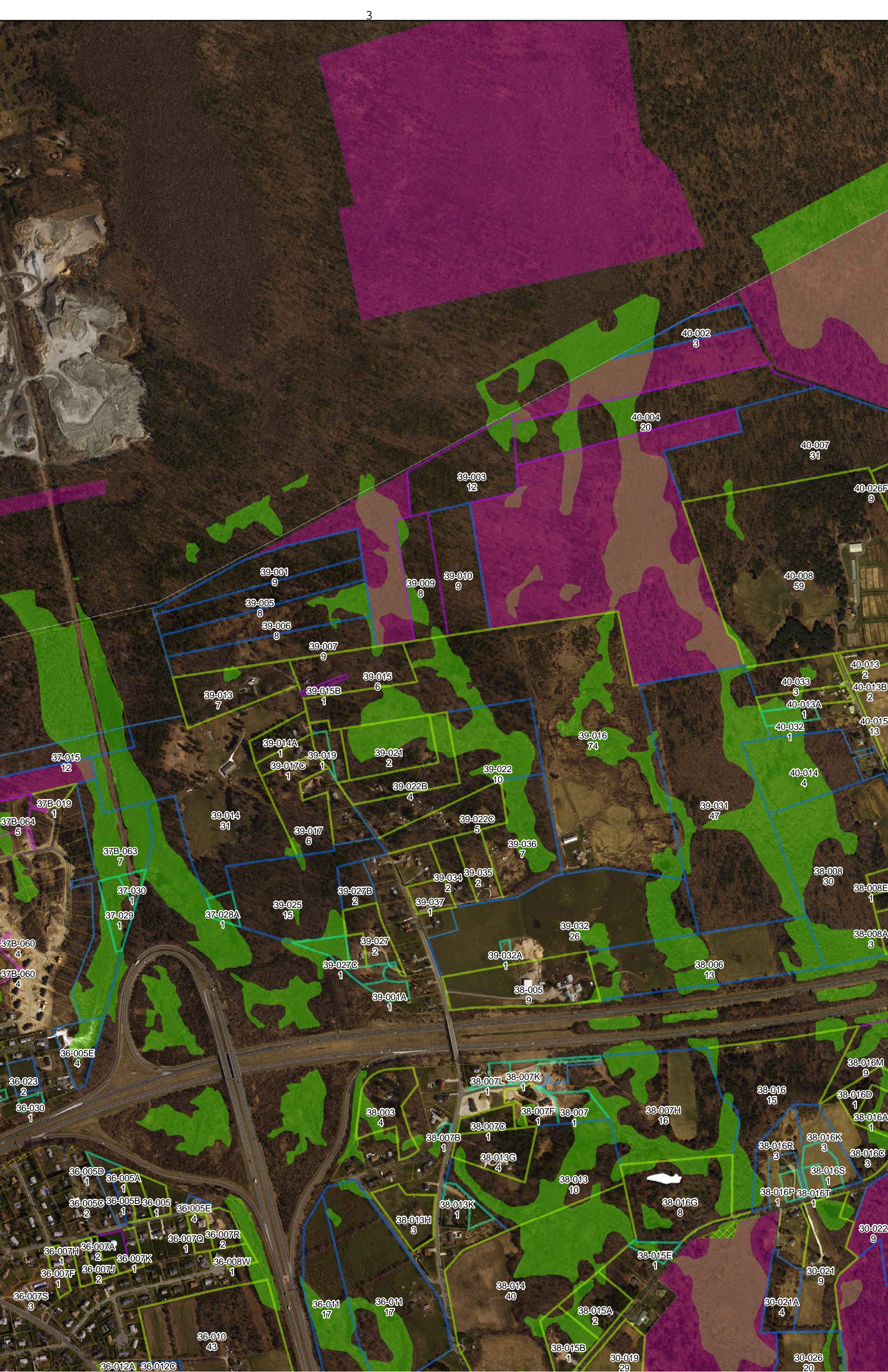
04-021
1

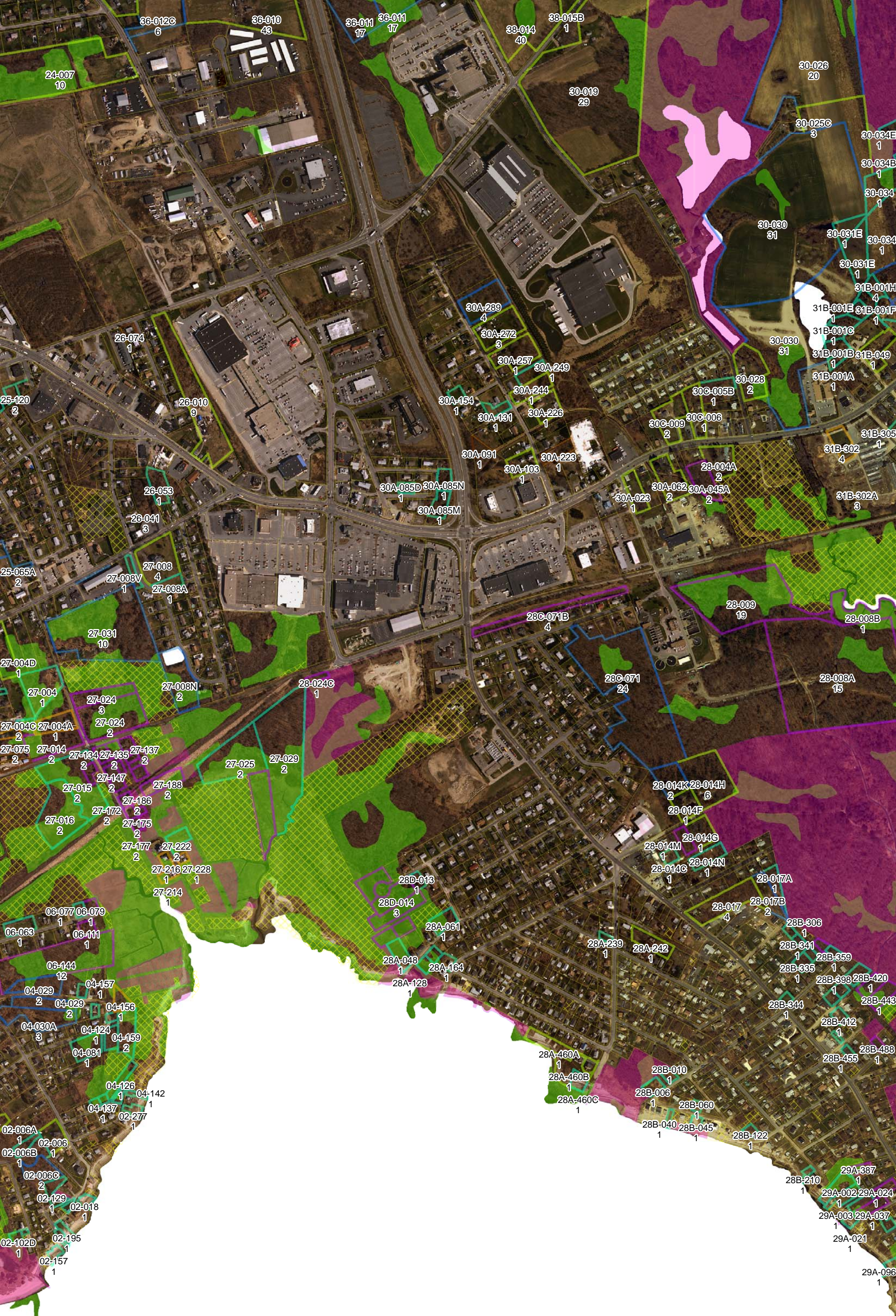
02-039
1

03-200
1

02-062
1

02-044
1









34A-008 4
34A-027 1
34A-037 1
34A-038 1
31A-334 1
31A-453 2
31A-460 1
30-045BB 1
34A-005A 6
34A-005 2
34A-009B 4
31A-168 1
31A-195 1
31A-308 24
31A-322 1
31A-440 1
31A-466 1
31A-600Y 1
30-035 3
30B-139 5
30B-142A 1
30B-142 1
34A-010 1
34A-009 3
31A-116 3
31A-147 1
31A-201 2
31A-353 2
30-034E 1
30B-132 1
30B-141 2
30B-142 1
31-115A 1
31A-001 1
31A-040 1
31A-122 2
31A-207 2
31A-327 4
31A-460 1
31A-600V 3
30-034B 1
30B-030 1
30B-001C 7
30B-015 1
30B-138 2
31-025B 1
31-024A 1
31A-116 3
31A-174 5
31A-207 2
31A-327 4
31A-695 2
31A-960B 6
31A-1033 1
30-034 1
30B-015 1
30B-138 2
31-025B 1
31-024A 1
31A-116 3
31A-174 5
31A-207 2
31A-327 4
31A-695 2
31A-960B 6
31A-1033 1
31B-001H 4
31-013A 2
31B-072 1
31-119 2
31-121 1
31-122 1
31-123 1
31-124A 1
31-124C 2
31-124B 2
31A-001H 2
31A-232 1
31A-244 2
31A-265 2
31A-300B 2
31A-300 3
31A-300A 2
31A-244 2
31A-265 2
31A-301 15
31A-304 35
31A-291 11
31A-968A 2
31A-1010 2
31A-1043 1
31B-001K 1
31B-035 1
31B-165 1
31B-193 1
31B-172 1
31B-196 1
31B-204 1
31-156A 1
32-033 3
32-032A 3
32-031 5
32-032 5
32-040 28
31B-305 1
31B-302C 20
31B-302B 1
31B-298 3
32-020 1
32-020A 3
32-022 1
32-023 5
32-025 1
32-027 14
32-003 2
32-019M 1
32-019N 1
32-026J 1
32-026D 1
32-026C 2
32-026E 1
32-026H 1
32-026G 1
32-026F 4
32-026G 1
32A-103 1
32A-105 1
32A-106 6
32A-054 1
32A-128 1
32A-035 1
32A-046 1
32A-037 1
32-016 1
32A-013 1
32A-020 1
32A-017 1
32A-213 1
32A-215 1
32-036A 1
32A-215 1
32-037 23
32-038 22
28-008B 1
28-008A 15
28-032A 1
28-015 1
28-015 1
32A-215 1
33-022 1
33-026 24
33-025 9
33-027 15
28B-443 1
28B-510 1
28B-568 1
28B-715 1
32A-215 1
33-022 1
33-026B 1
33-045A 1
33-026A 1
33-032 1
33-034B 1
33-034A 1

