

**Legend**

- W1F-02 Segment
- Segment Break

0 5 10 Miles

N

**E N T R I X**

Figure 1  
Segment Location W1F-02  
Bouchard B No. 120 Oil Spill  
Buzzards Bay, MA





**ENTRIX**  
ENVIRONMENTAL CONSULTANTS

**Figure 2**  
Segment Boundary W1F-02  
Brandt Island West  
Bouchard B No. 120 Oil Spill  
Buzzards Bay, MA



SOURCE:  
 MASSACHUSETTS GEOGRAPHIC  
 INFORMATION SYSTEMS (MASSGIS)  
 2001 AERIAL PHOTOGRAPH



PROJECT:

B120 OIL SPILL

LOCATION:

SHORELINE SEGMENT WIF-02  
 MATTAPOISETT, MASSACHUSETTS

TITLE:

APPROXIMATE LOCATIONS OF PHASE IV  
 FIELD ACTIVITIES

DESIGNED:

KEZ

DRAWN:

KEZ

CHECKED:

KDT

APPROVED:

MJW

SCALE:

AS SHOWN

DATE:

10/10/07

FILE NO.:

F3-P4 FIELD  
 ACT

PROJECT NO.:

3871-002

FIGURE NO.:

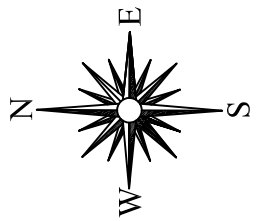
3



**GeoInsight**<sup>®</sup>  
 Environmental Strategy & Engineering  
*Practical in Nature*



See Figure 4A for Expanded View



Note:  
1. See Figures 7A and 7B for trench designations

**Legend**

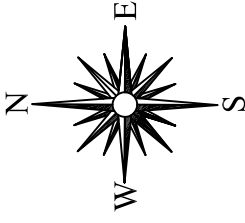
- Test Pit/Trench location
- Grab Sample Collected for Fingerprint Analysis
- Grab Sample Collected for EPH Analysis
- Grab Sample Collected Using Hand Auger for EPH Analysis

Grassy Area

Beach Groin (cobbles and boulders)

0 25 50 100

		50 Nashua Road, Suite 205 Londonderry, NH 03053 <i>Technically Smart.          Business Sensitive.</i>		PROJECT: B120 Oil Spill	
<b>Sediment Sampling Locations</b>					
DESIGNED:	MGC	CHECKED:	RAW	APPROVED:	RAW
SCALE:	As Shown	DATE:	1/18/08	NO.:	figure4
				PROJECT:	2002-001
				FIGURE:	4



**Legend**

- Test Pit/Trench Location
- Grab Sample Collected for Fingerprint Analysis
- Grab Sample Collected for EPH Analysis
- Grab Sample Collected Using Hand Auger for EPH Analysis
- Grassy Area
- Beach Groin (cobble and boulders)

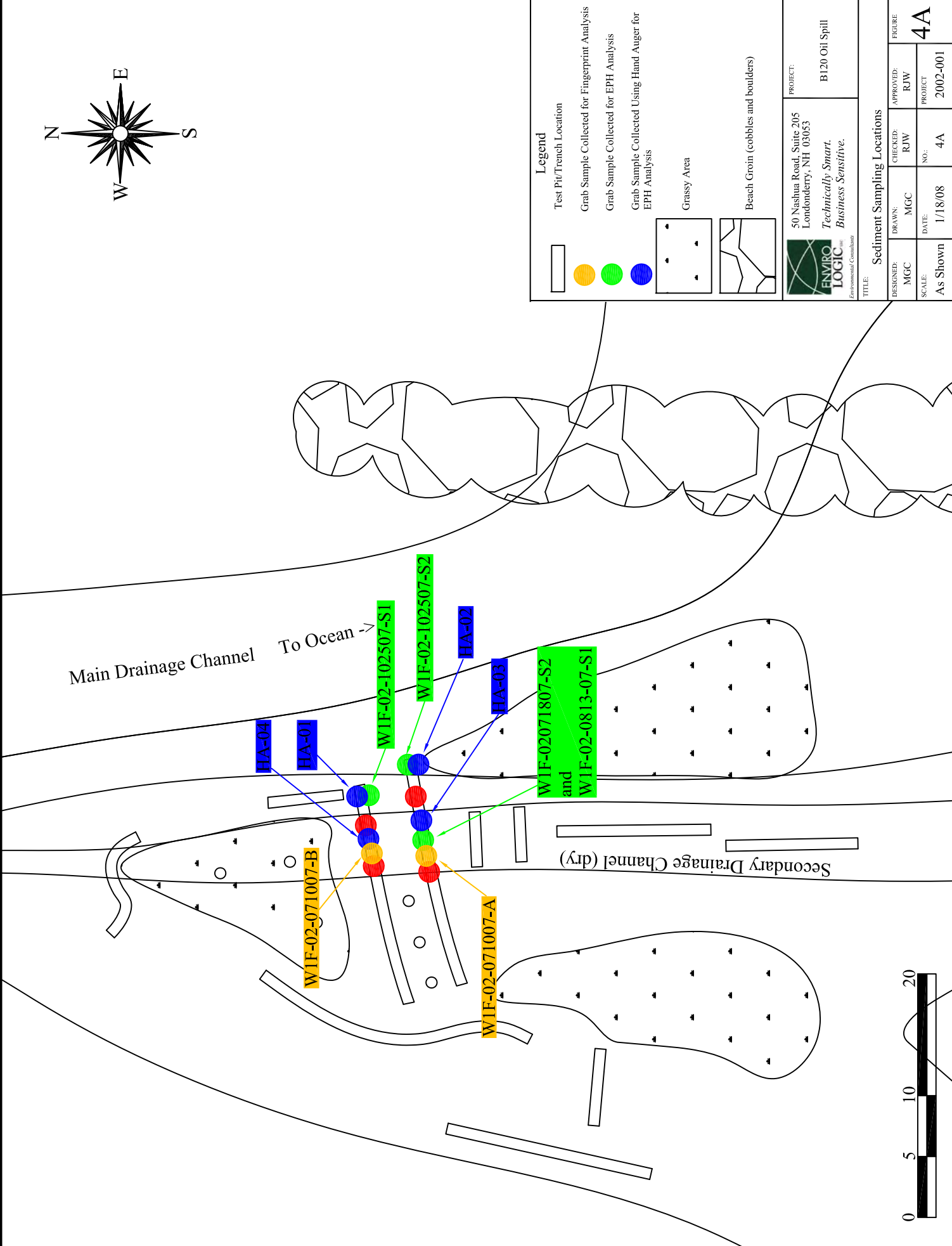
PROJECT: B120 Oil Spill

50 Nashua Road, Suite 205  
 Londonderry, NH 03053  
*Technically Smart.*  
*Business Sensitive.*

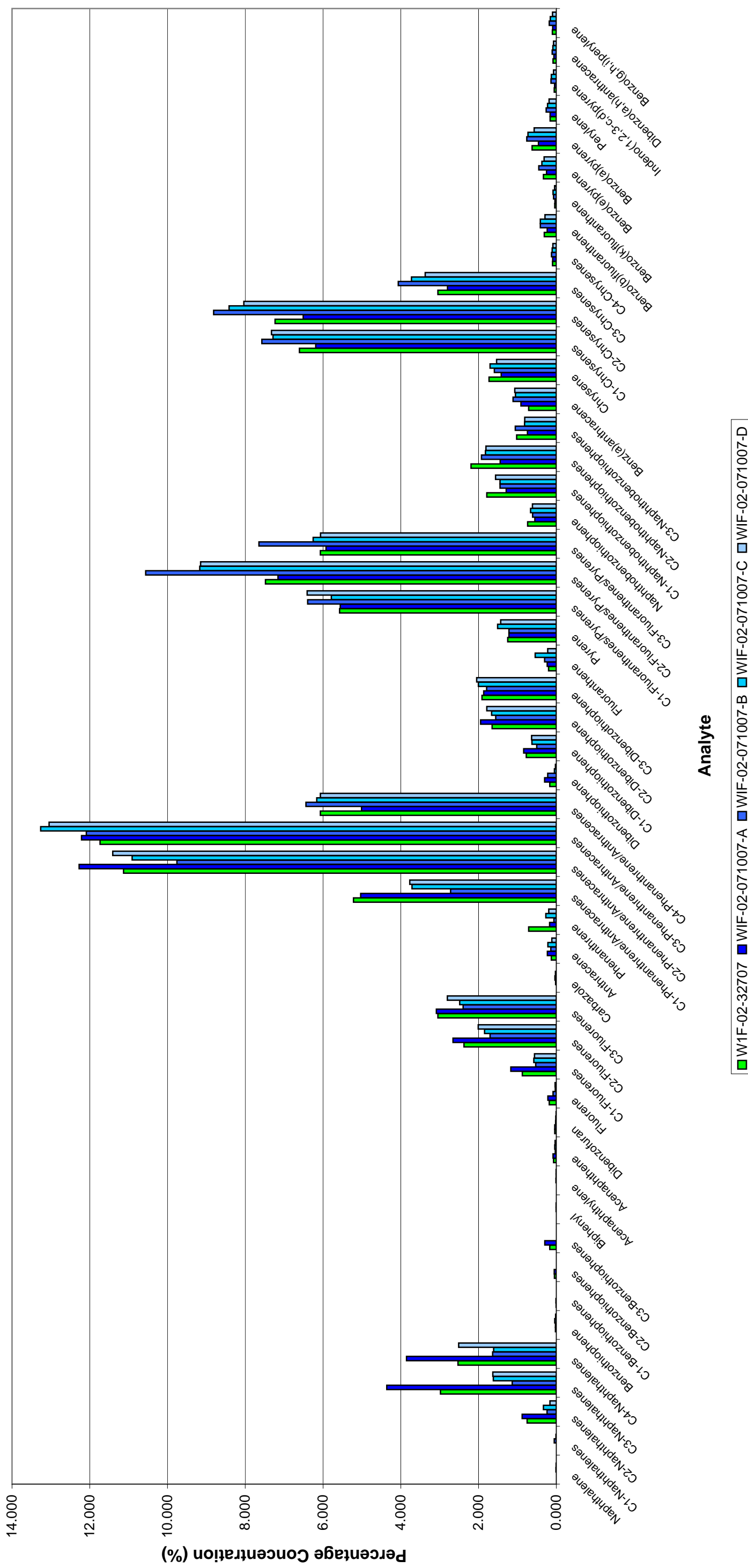
ENVIRO LOGIC  
 Environmental Consultants

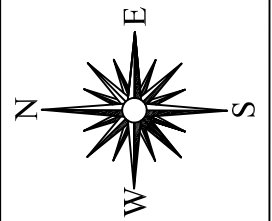
TITLE: Sediment Sampling Locations

DESIGNED: MGC	CHECKED: RJW	APPROVED: RJW	FIGURE: 4A
SCALE: As Shown	DATE: 1/18/08	PROJECT NO.: 2002-001	



**Figure 5 - Sample Comparisons for Fingerprint Analysis**  
**Leisure Shores - Shoreline Segment W1F-02**  
**Barge B120 Spill**  
**Buzzards Bay, Massachusetts**





Note:  
1. See Figures 7A and 7B for trench designations

Legend

-  Test Pit/Trench location
-  Grassy Area
-  Beach Groin (cobblestones and boulders)



50 Nashua Road, Suite 205  
Londonderry, NH 03053  
*Technically Smart.  
Business Sensitive.*

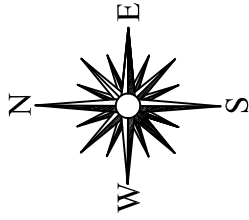


Environmental Consultants

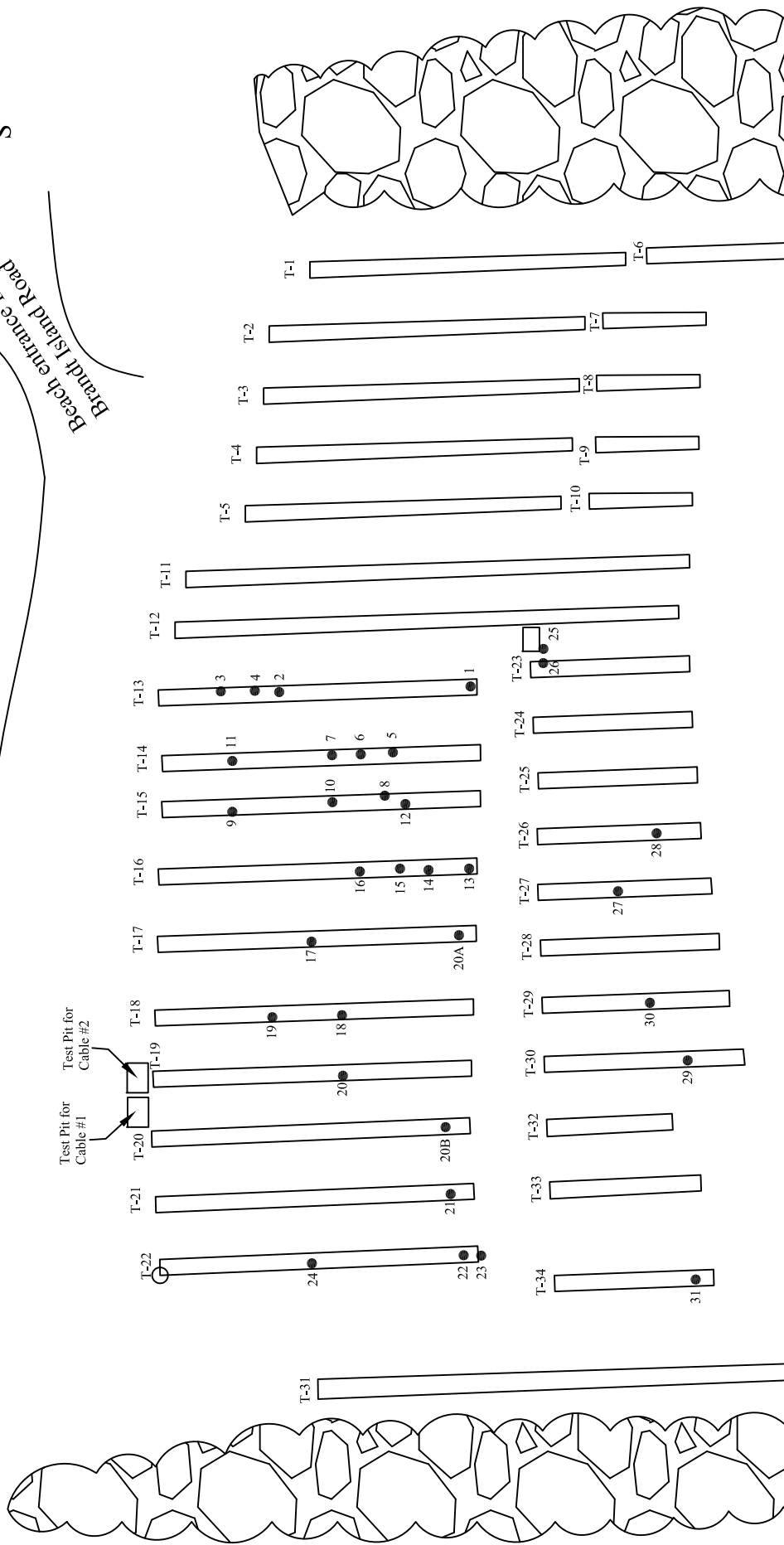
PROJECT:  
B120 Oil Spill


TITLE: Phase IV Trench/Test Pit Locations

DESIGNED: MGC	CHECKED: RJW	APPROVED: RJW	FIGURE
SCALE: As Shown	DATE: 1/18/08	NO.: figure6	PROJECT: 2002-001
			FIGURE: 6



Beach entrance from  
Brandt Island Road



		PROJECT: 50 Nashua Road, Suite 205 Londonderry, NH 03063 <i>Technically Smart,          Business Sensitive.</i>		PROJECT: B120 Oil Spill	
TITLE: Trench / Test Pit Locations - Leisure Shores					
DESIGNED:	MGC	CHECKED:	RJW	APPROVED:	RJW
DRAWN:	MGC	NO.:	trench locs	PROJECT	2002-001
SCALE:	As Shown	DATE:	1/18/08	FIGURE	
					7

**Legend**

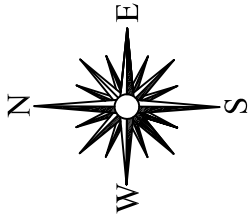
- 1 Observation location - See attached tables 2 and 3 for descriptions
- T-1 Trench location and designation

Grassy Area

Beach Groin (cobles and boulders)

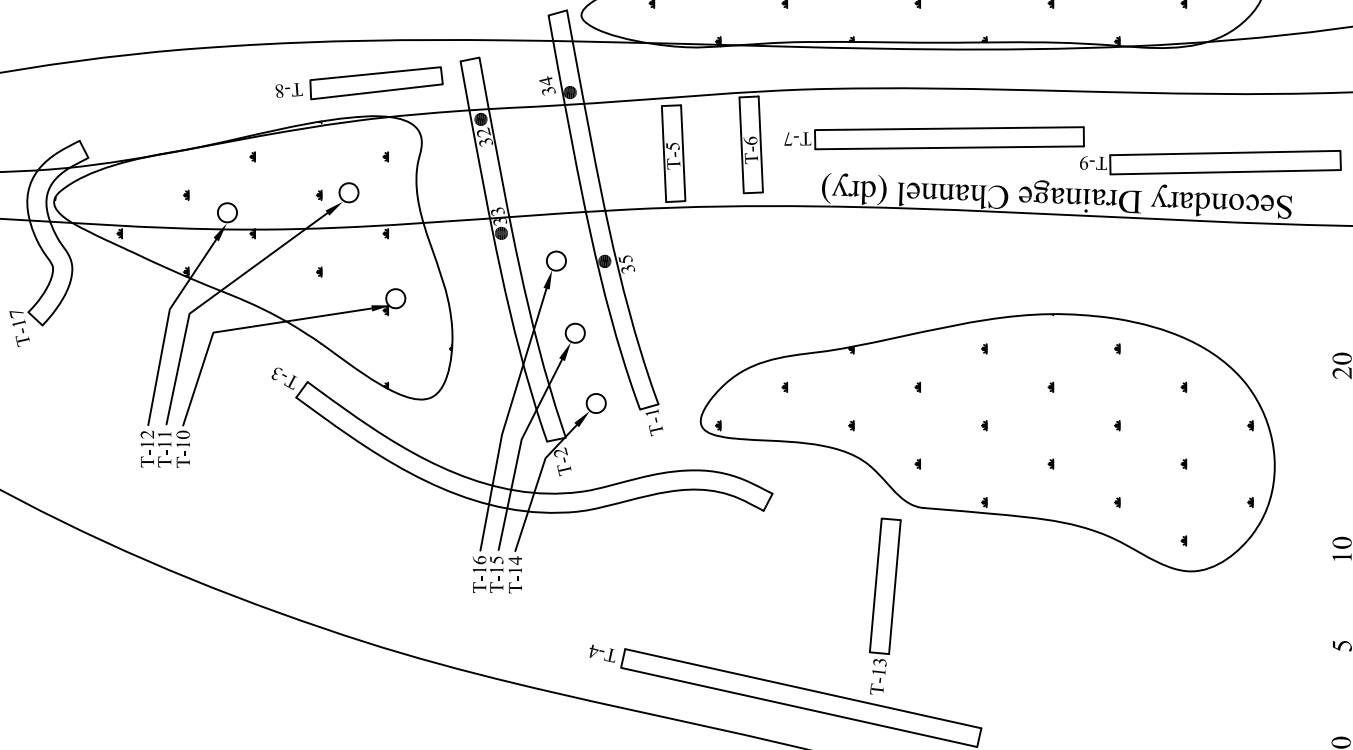






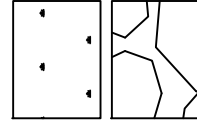
Main Drainage Channel To Ocean ->

Secondary Drainage Channel (dry)



**Legend**

● 1  
 Observation location - See attached tables 2 and 3 for descriptions  
 T-1  
 Trench location and designation



PROJECT:  
 50 Nashua Road, Suite 205  
 Londonderry, NH 03055

PROJECT:  
 B120 Oil Spill

TITLE: Trench / Test Pit Locations - Howard's Beach

DESIGNED: MGC	CHECKED: RJW	APPROVED: RJW	FIGURE 8
SCALE: As Shown	DATE: 1/18/08	NO.: trench locs	PROJECT 2002-001



NOTE:

TRANSECT LOCATIONS ARE APPROXIMATE

SOURCE:

MASSACHUSETTS GEOGRAPHIC INFORMATION SYSTEMS (MASSGIS)

2001 AERIAL PHOTOGRAPH



PROJECT:

B120 OIL SPILL

LOCATION:

SHORELINE SEGMENT WIF-02  
MATTAPAN, MASSACHUSETTS

TITLE:

SHORELINE PROFILE TRANSECT LOCATIONS

DESIGNED:

KEZ

DRAWN:

KEZ

CHECKED:

KDT

APPROVED:

MJW

SCALE:

AS SHOWN

FILE NO.:

F5-TRANSECT  
LOCATIONS

PROJECT NO.:

3871-002

FIGURE NO.:

9



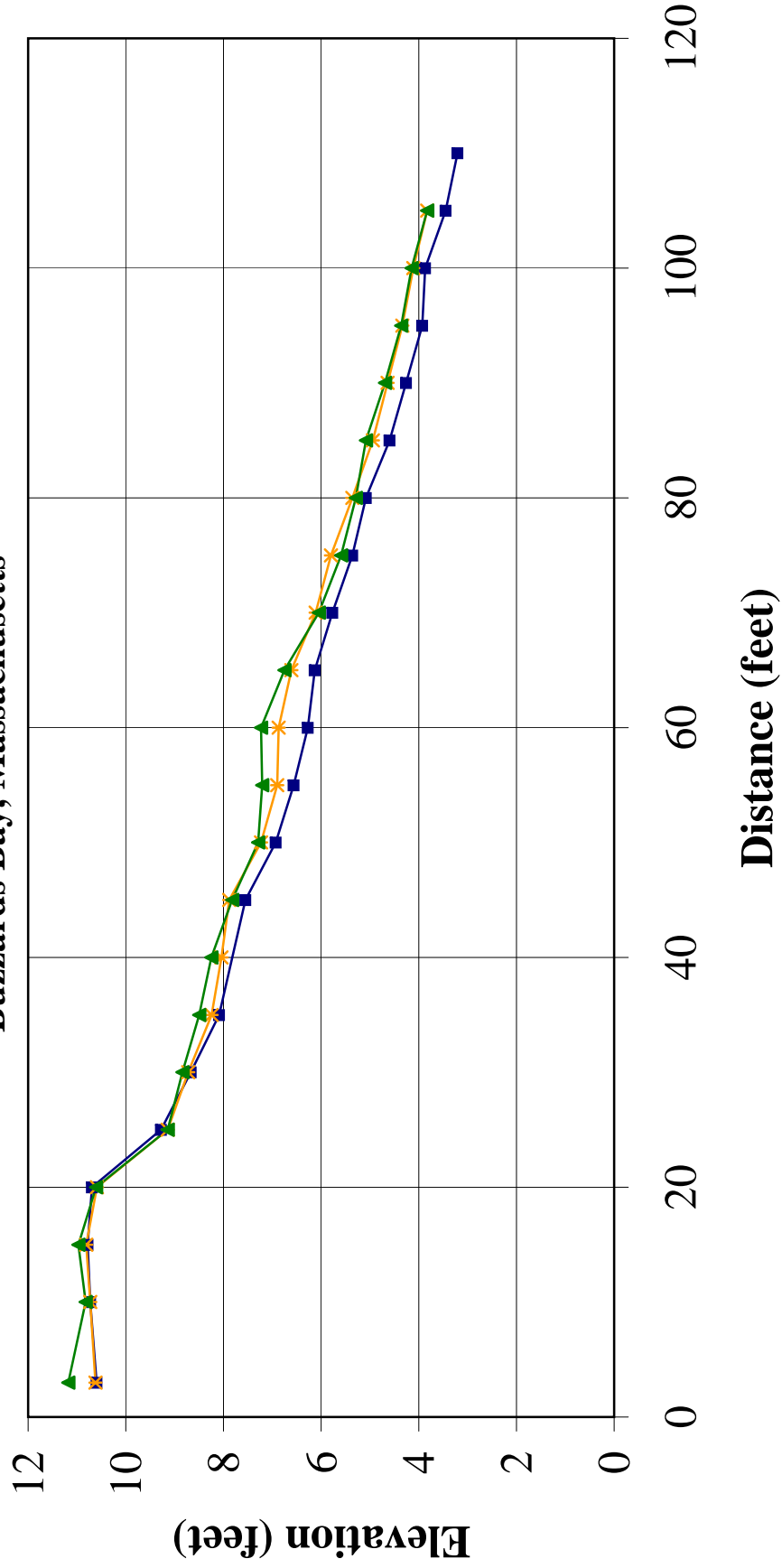
**GeoInsight**<sup>®</sup>  
Environmental Strategy & Engineering  
*Practical in Nature*

**Figure 10 - Shoreline Profile - Transect P4-1**

**Shoreline Segment W1F-02**

**Barge B120 Spill**

**Buzzards Bay, Massachusetts**



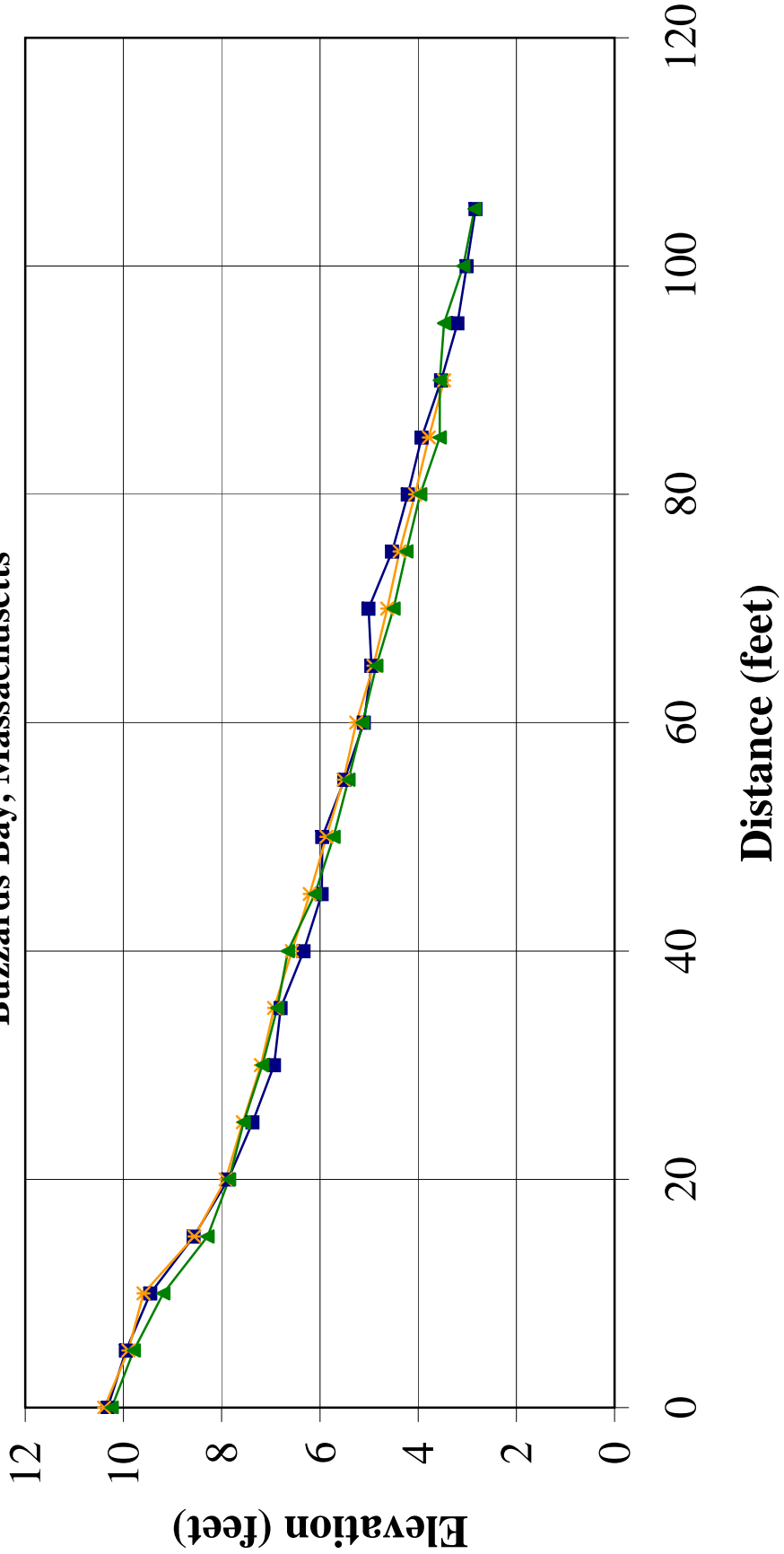
Legend:  
09/10/07 (blue square)  
10/10/07 (orange asterisk)  
11/07/2007 (green triangle)

**Figure 11 - Shoreline Profile - Transect P4-2**

**Shoreline Segment W1F-02**

**Barge B120 Spill**

**Buzzards Bay, Massachusetts**



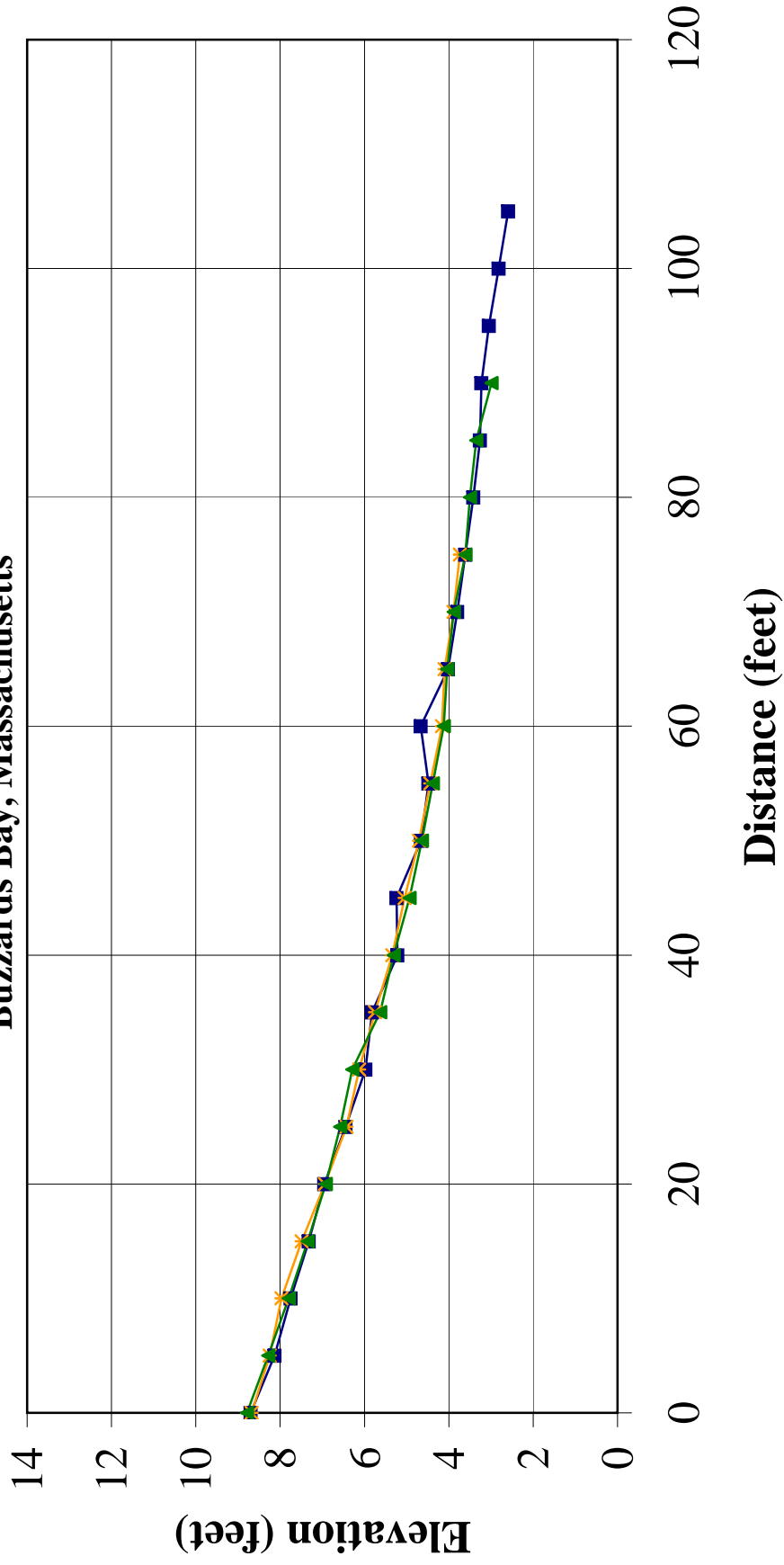
Legend:  
-■- 09/10/07  
-\* 10/10/07  
-▲ 11/07/2007

**Figure 12 - Shoreline Profile - Transect P4-3**

**Shoreline Segment W1F-02**

**Barge B120 Spill**

**Buzzards Bay, Massachusetts**

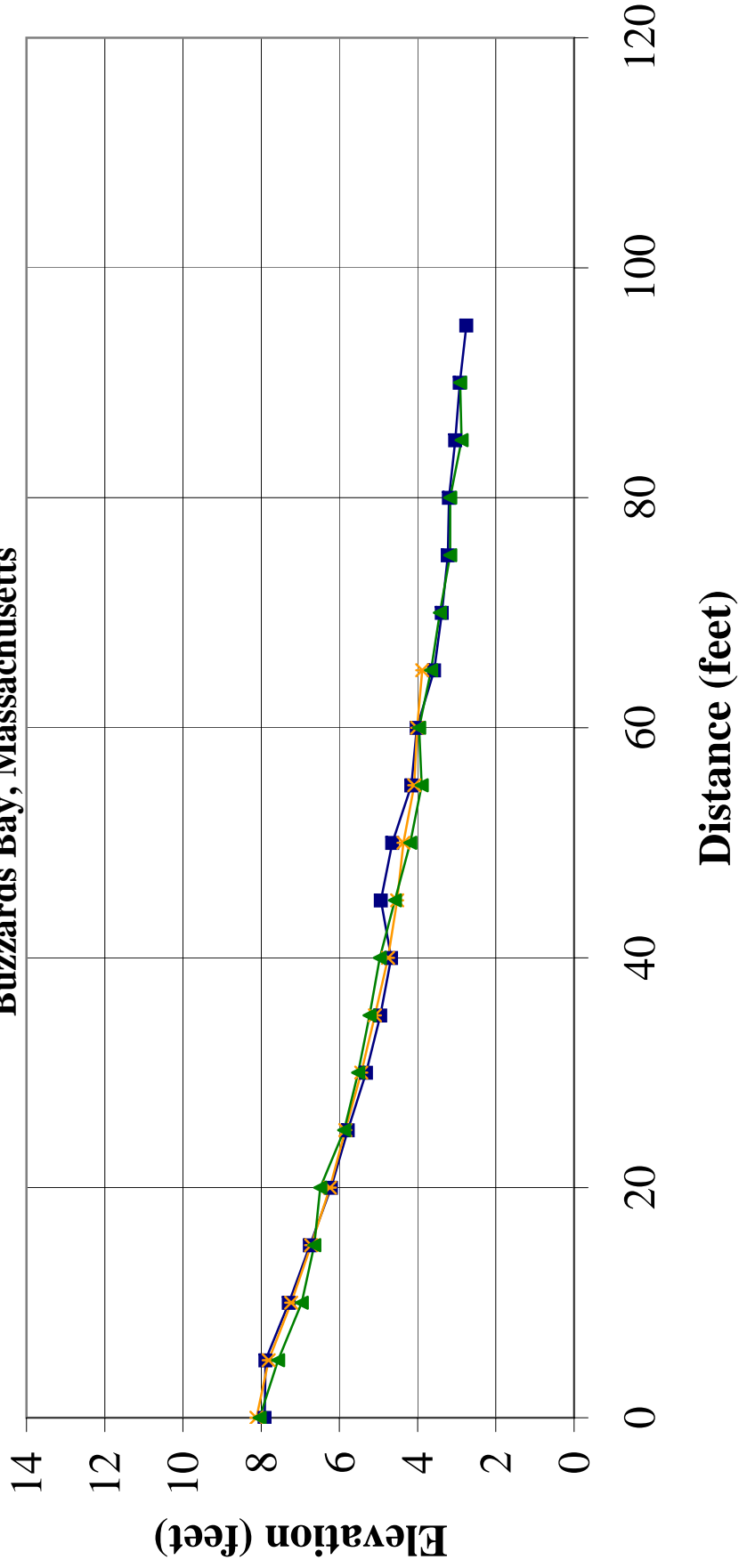


**Figure 13 - Shoreline Profile - Transect P4-4**

**Shoreline Segment W1F-02**

**Barge B120 Spill**

**Buzzards Bay, Massachusetts**

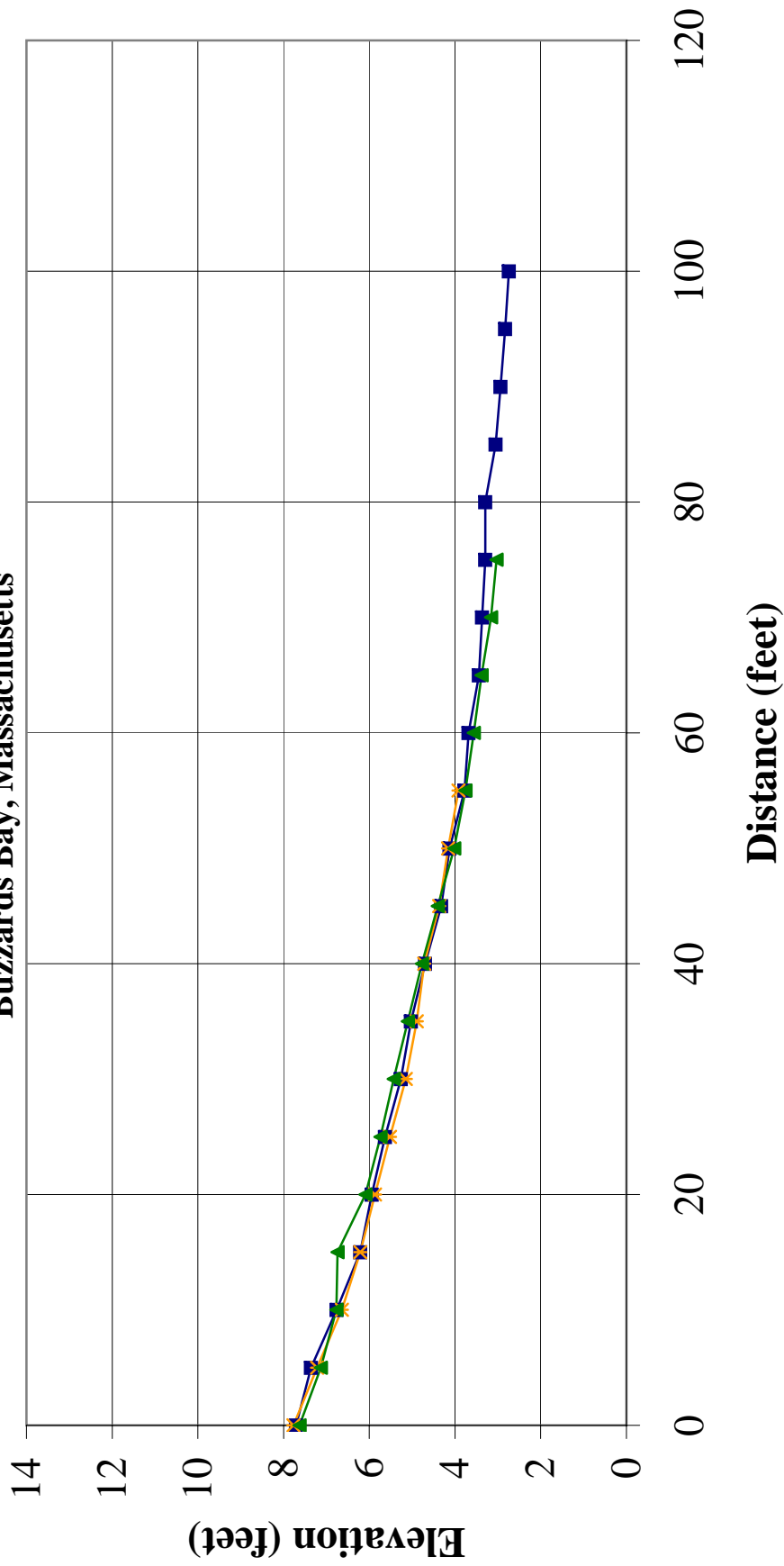


# Figure 14 - Shoreline Profile - Transect P4-5

Shoreline Segment W1F-02

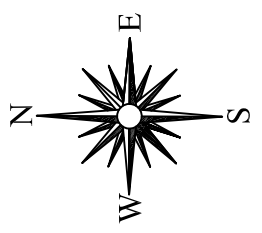
Barge B120 Spill

Buzzards Bay, Massachusetts





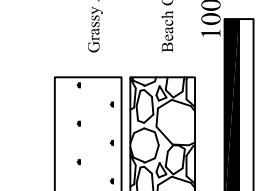
See Figure 15A for Expanded View



Note:  
1. See Figures 7A and 7B for trench designations

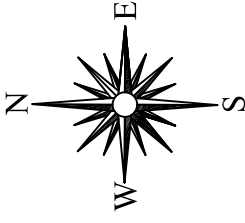
**Legend**

- Test Pit/Trench Location
- Test Pit Location
- Beach Sediment Removal Area
- Grassy Area
- Beach Groin (cobbles and boulders)



Environmental Consultants		50 Nashua Road, Suite 205 Londonderry, NH 03053 <i>Technically Smart.          Business Sensitive.</i>		PROJECT: B120 Oil Spill
TITLE: Sediment Excavation Locations		CHECKED: RJW	APPROVED: RJW	FIGURE <b>15</b>
DESIGNED: MGC	DRAWN: MGC	NO.: figure 15	PROJECT 2002-001	
SCALE: As Shown	DATE: 1/18/08			





**Legend**

- Test Pit/Trench Location (represented by a rectangle)
- Test Pit Location (represented by a green rectangle)
- Beach Sediment Removal Area (represented by a green oval)
- Grassy Area (represented by a rectangle with small black dots)
- Beach Groin (cobbles and boulders) (represented by a rectangle with irregular shapes)

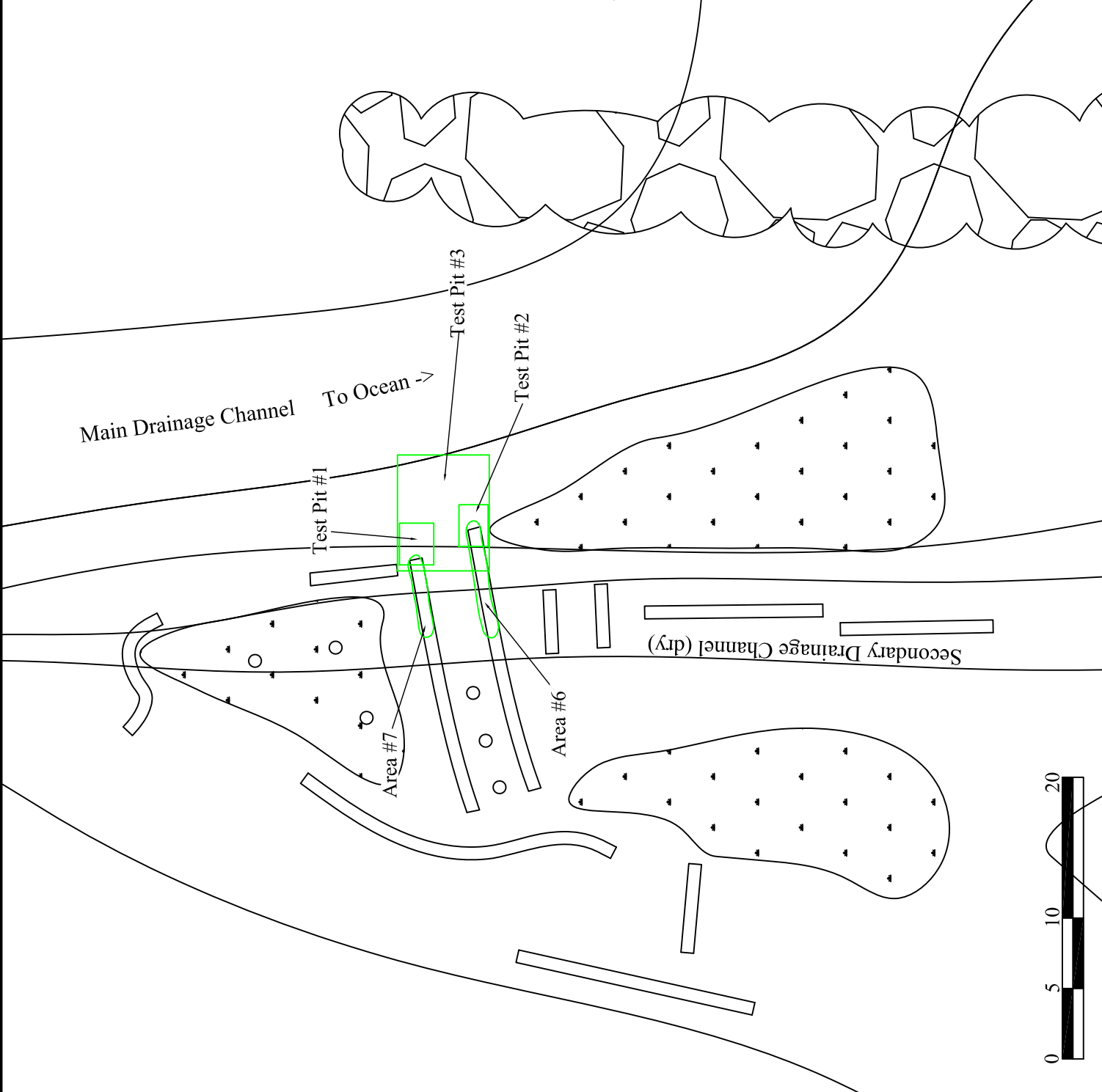
PROJECT: B120 Oil Spill

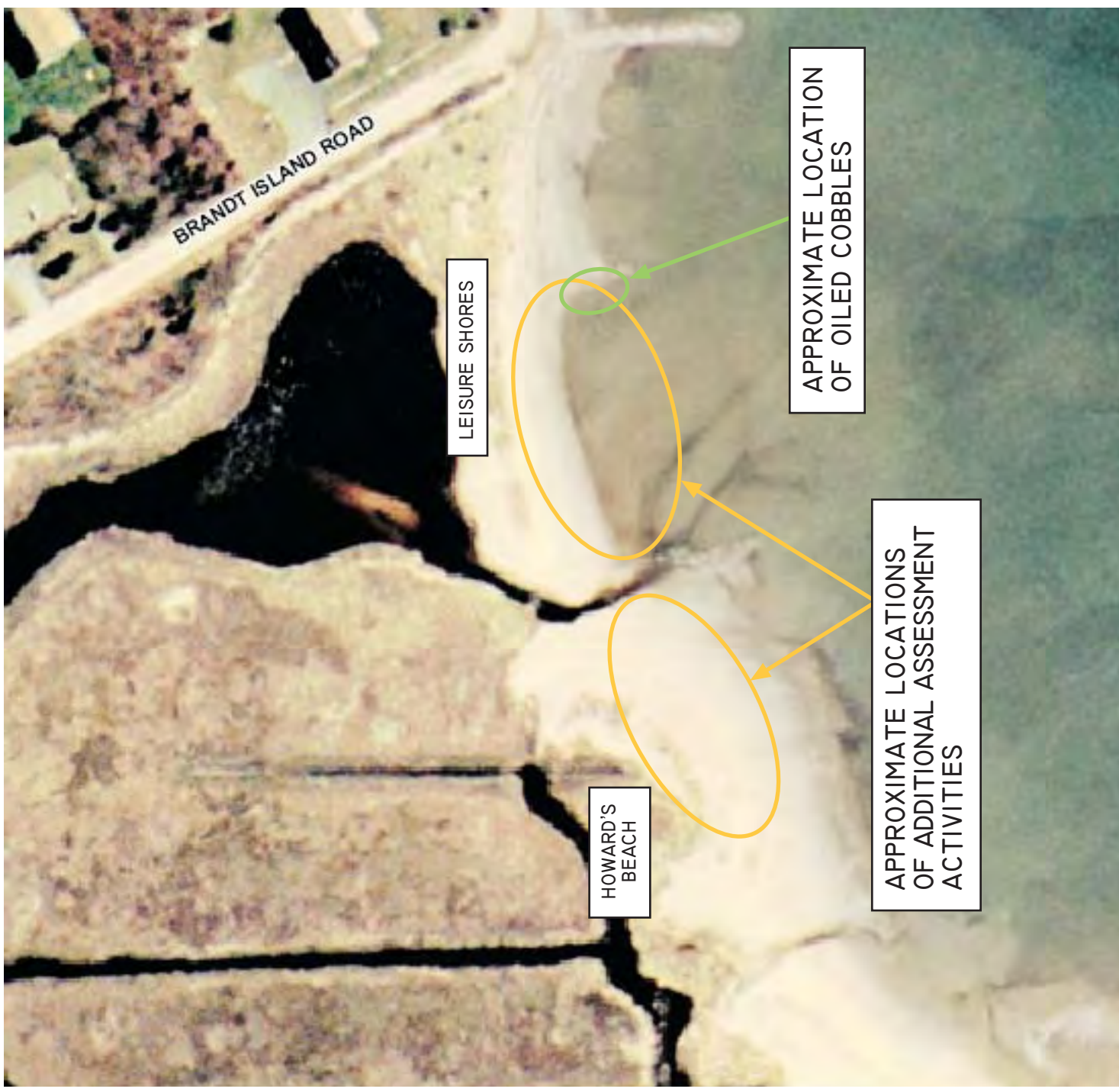
50 Nashua Road, Suite 205  
 Londonderry, NH 03055  
*Technically Smart.*  
*Business Sensitive.*

ENVIRO LOGIC  
 Environmental Consultants

TITLE: Sediment Excavation Locations

DESIGNED:	MGC	CHECKED:	RJW	APPROVED:	RJW	FIGURE:	15A
DRAWN:	MGC	DATE:	1/18/08	PROJECT NO.:	2002-001		
SCALE:	As Shown						





SOURCE:  
 MASSACHUSETTS GEOGRAPHIC  
 INFORMATION SYSTEMS (MASSGIS)  
 2001 AERIAL PHOTOGRAPH

PROJECT:

B120 OIL SPILL

LOCATION:

SHORELINE SEGMENT WIF-02  
 MATTAPANSETT, MASSACHUSETTS

TITLE:

PROPOSED ADDITIONAL PHASE IV  
 ASSESSMENT LOCATIONS

DESIGNED:

KEZ

DRAWN:

KEZ

CHECKED:

KDT

APPROVED:

MJW

SCALE:

AS SHOWN

DATE:

1/7/08

FILE NO.:

F16-PROP ADDL

PROJECT NO.:

3871-002

FIGURE NO.:

16



**GeoInsight**<sup>®</sup>  
 Environmental Strategy & Engineering  
*Practical in Nature*