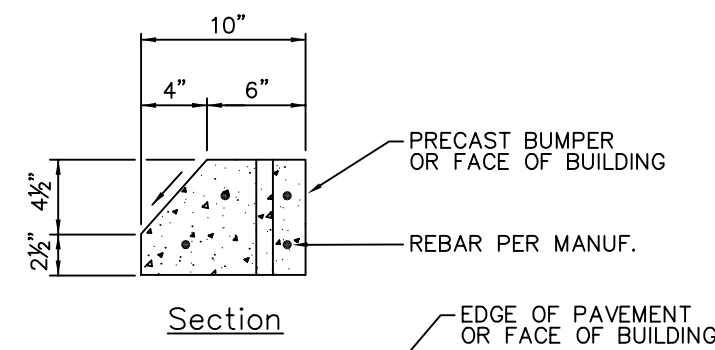


TYPICAL CAPE COD BERM DETAIL
NOT TO SCALE

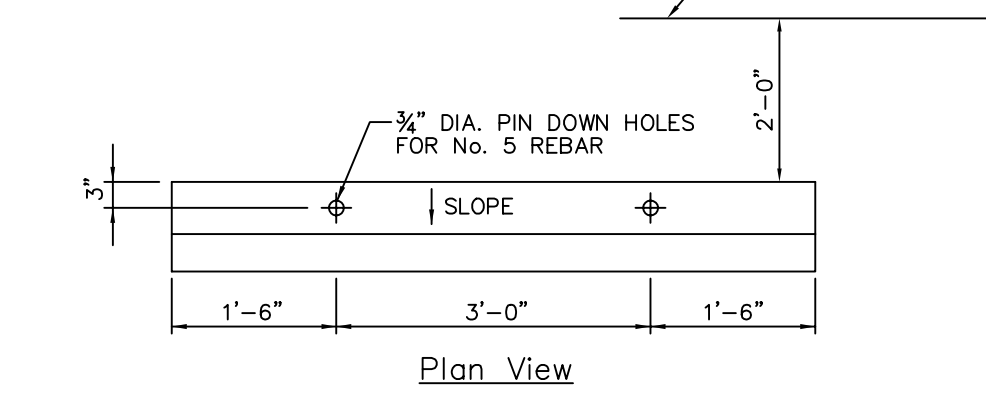


CURB STOP DETAIL
NOT TO SCALE

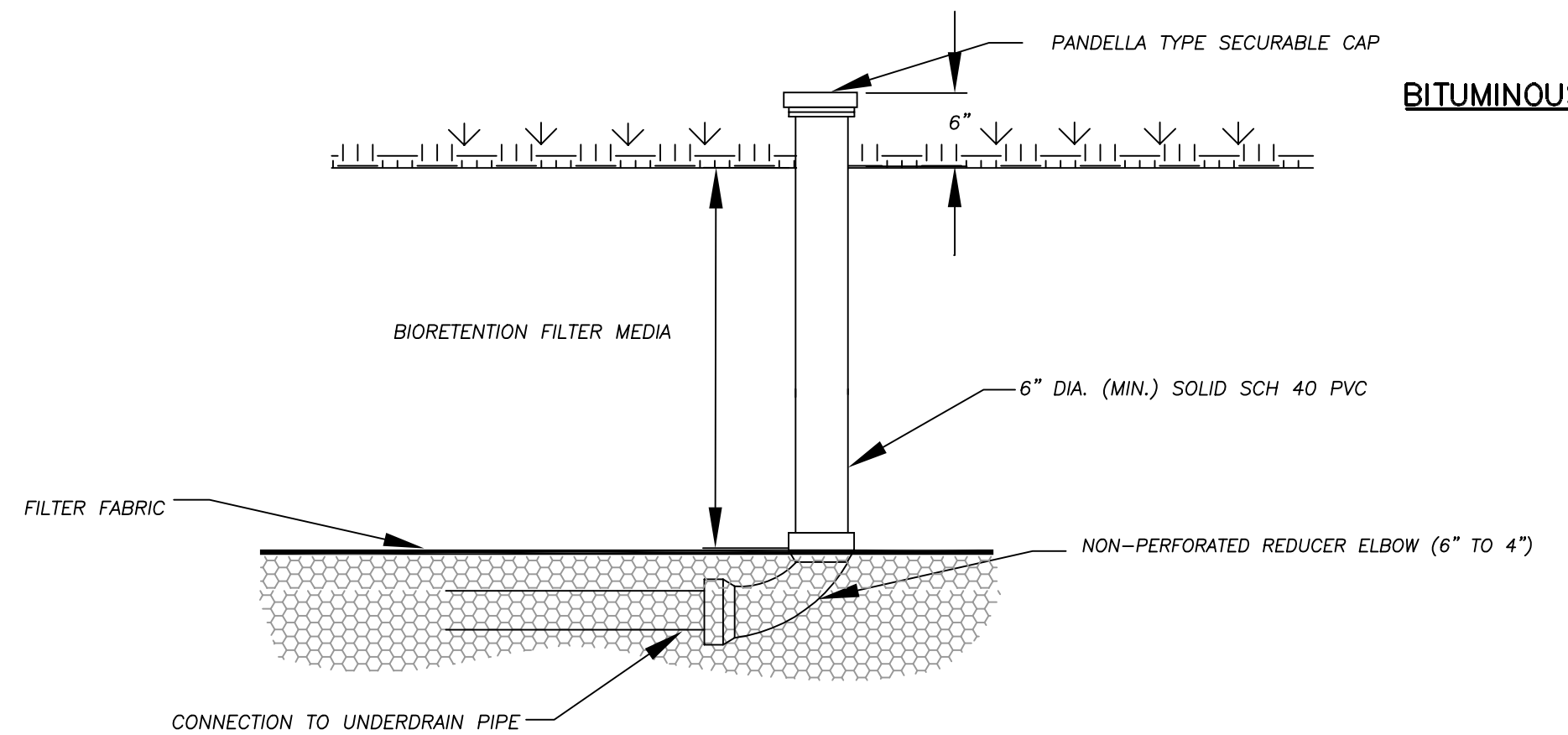
BIORETENTION STRUCTURE SCHEDULE:

STRUCTURE #	SURFACE AREA (SF)*	PIPES			FITTINGS			NOTES
		DIAMETER (IN)	TYPE	LENGTH (FT)	TYPE	NUMBER		
B 1	7570	12	PVC	10	Reducer (12"-8")	1	Manifold	
		8	PVC	156	8" - 22.5° Bend	3	Manifold	
		4	PVC	64	Reducing Tee (8"-4")	16	Manifold	
		4	PVC (P)	690	4" - Cross Tee	15	Subdrain	
		6	PVC	4	Reducing 90° Bend (4" 6")	1	Cleanout	
B 2A	295	4	PVC (P)	25	Reducing 45° Bend (4" 6")	1	Subdrain	
		6	PVC	10	6" 45° Bend	1	Subdrain	
		6	PVC	4	Reducing 90° Bend (4" 6")	1	Cleanout	
		6	PVC	4	6" Watertight Cap	1	Cleanout	
		4	PVC (P)	30	Reducing 45° Bend (4" 6")	1	Subdrain	
B 2B	410	6	PVC	9	6" - 45° WYE	1	Subdrain	
		6	PVC	4	Reducing 90° Bend (4" 6")	1	Cleanout	
		6	PVC	4	6" Watertight Cap	1	Cleanout	
B 2C	425	4	PVC (P)	30	Reducing 45° Bend (4" 6")	1	Subdrain	
		6	PVC	6	6" - 45° WYE	1	Subdrain	
		6	PVC	4	Reducing 90° Bend (4" 6")	1	Cleanout	
B 2D	360	4	PVC (P)	25	Reducing 45° Bend (4" 6")	1	Subdrain	
		6	PVC	5	6" - 45° WYE	1	Subdrain	
		6	PVC	4	Reducing 90° Bend (4" 6")	1	Cleanout	
B 3A-4B	2220	4	PVC (P)	209	4" - Cross Tee	4	Subdrain	
		6	PVC	4	Reducing 90° Bend (4" 6")	1	Cleanout	
		6	PVC	4	6" Watertight Cap	1	Cleanout	
B 3B	675	4	PVC (P)	74	4" - Cross Tee	5	Subdrain	
		6	PVC	4	Reducing 90° Bend (4" 6")	1	Cleanout	
		6	PVC	4	6" Watertight Cap	1	Cleanout	
B4A	1825	4	PVC (P)	150	None	-	Subdrain	
		6	PVC	4	Reducing 90° Bend (4" 6")	1	Cleanout	
		6	PVC	4	6" Watertight Cap	1	Cleanout	

Abbreviations:
PVC - Polyvinyl Chloride Pipe Schedule 40
*Note: Surface Area calculated at top of bioretention elevation



Sloped Side Elevation



TYPICAL CLEAN-OUT DETAIL
NOT TO SCALE

DRAINAGE STRUCTURE SCHEDULE:

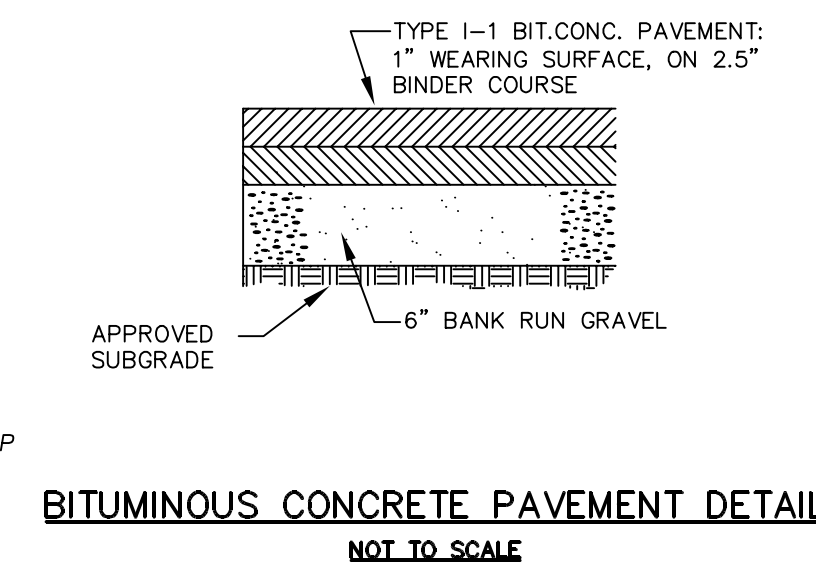
STRUCTURE #	RIM (FT)	INVERT IN 1 (FT)	INVERT IN 2 (FT)	INVERT IN 3 (FT)	INVERT OUT 1 (FT)	INVERT OUT 2 (FT)
DMH 1	10.00	8.00	7.65	7.65	7.50	-
DMH 2	9.40	6.70	6.65	6.00	5.90	-
DMH 3	8.10	5.30	-	-	4.80	4.00
DMH 4	5.50	3.15	3.10	-	2.85	-
DMH 5	5.00	1.60	2.50	2.50	1.50	-
DMH 6	5.30	1.00	2.00	-	1.00	-
B 1	6.00	3.50	-	-	3.30	-
B 3B	5.00	2.50	-	-	2.35	-
CB 1	10.60	-	-	-	8.25	-
CB 2	10.15	-	-	-	7.80	-
CB 3	10.05	-	-	-	7.70	-
CB 4	9.20	-	-	-	6.85	-
CB 5	9.20	-	-	-	6.85	-
CB 6 (EXIST)	5.10	2.05	3.00	-	1.95	-
DSD	8.10	4.75	-	-	5.40	-

Abbreviations:
DMH - Drainage Manhole B - Bioretention Basin DSD - Downstream Defender CB - Catch Basin

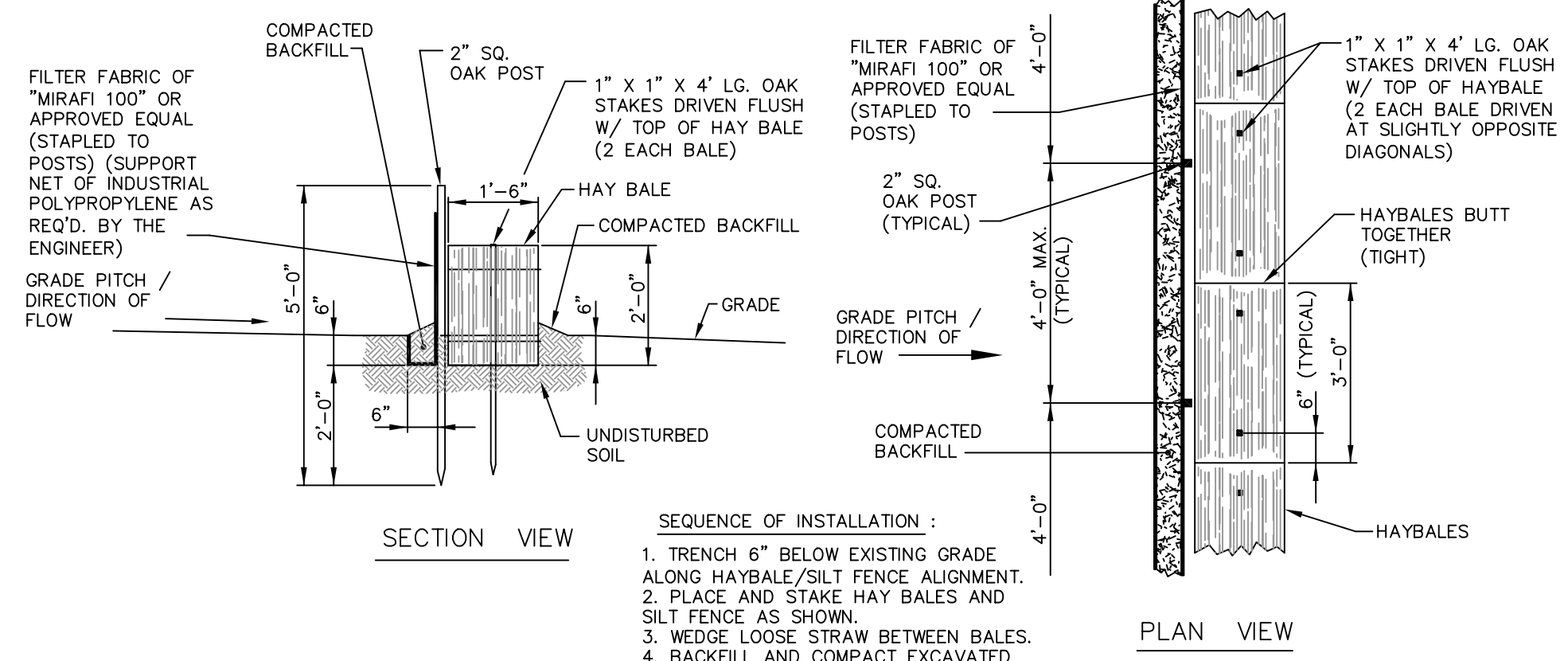
DRAINAGE PIPE SCHEDULE:

PIPE FROM	PIPE TO	DIAM. (IN)	LENGTH (FT)	TYPE	STARTING INVERT (FT)	ENDING INVERT (FT)	SLOPE
CB 1	DMH 1	10	42.0	HDPE	8.25	8.00	0.006
CB 2	DMH 1	10	21.0	HDPE	7.80	7.65	0.007
CB 3	DMH 1	10	5.5	HDPE	7.70	7.65	0.009
DMH 1	DMH 2	12	195.0	RCP	7.50	6.00	0.008
CB 4	DMH 2	10	18.0	HDPE	6.85	6.70	0.008
CB 5	DMH 2	10	37.0	HDPE	6.85	6.65	0.005
DMH 2	DMH 3	12	63.0	RCP	5.90	5.30	0.010
DMH 3	DSD	8	11.0	PVC	4.80	4.70	0.009
DMH 3	DMH 4	12	182.0	RCP	4.00	3.10	0.005
B 1	DMH 4	6	29.0	PVC	3.30	3.15	0.005
DMH 4	OUTLET	12	77.0	RCP	2.85	2.50	0.005
B 2A	FIT 1	6	10.0	PVC	3.35	3.30	0.005
FIT 1	FIT 2	6	57.0	PVC	3.30	3.00	0.005
B 2B	FIT 2	6	9.0	PVC	3.35	3.00	0.039
FIT 2	FIT 3	6	107.0	PVC	3.00	2.30	0.007
B 2C	FIT 3	6	6.0	PVC	2.35	2.30	0.008
FIT 3	FIT 4	6	47.0	PVC	2.30	2.15	0.003
B 2D	FIT 4	6	5.0	PVC	2.35	2.15	0.040
FIT 4	EX CB 6	6	27.0	PVC	2.15	2.05	0.004
EX CB 6	DMH 5	12	76.0	RCP	1.95	1.60	0.005
B 4A	B 3A-4B	4	36.0	PVC	3.50	3.00	0.014
DMH 5	DMH 6	12	101.5	RCP	1.50	1.00	0.005
B 3B	DMH 6	6	9.0	PVC	2.35	2.00	0.039
DMH 6	OUTLET	12	45.0	RCP	1.00	0.75	0.006

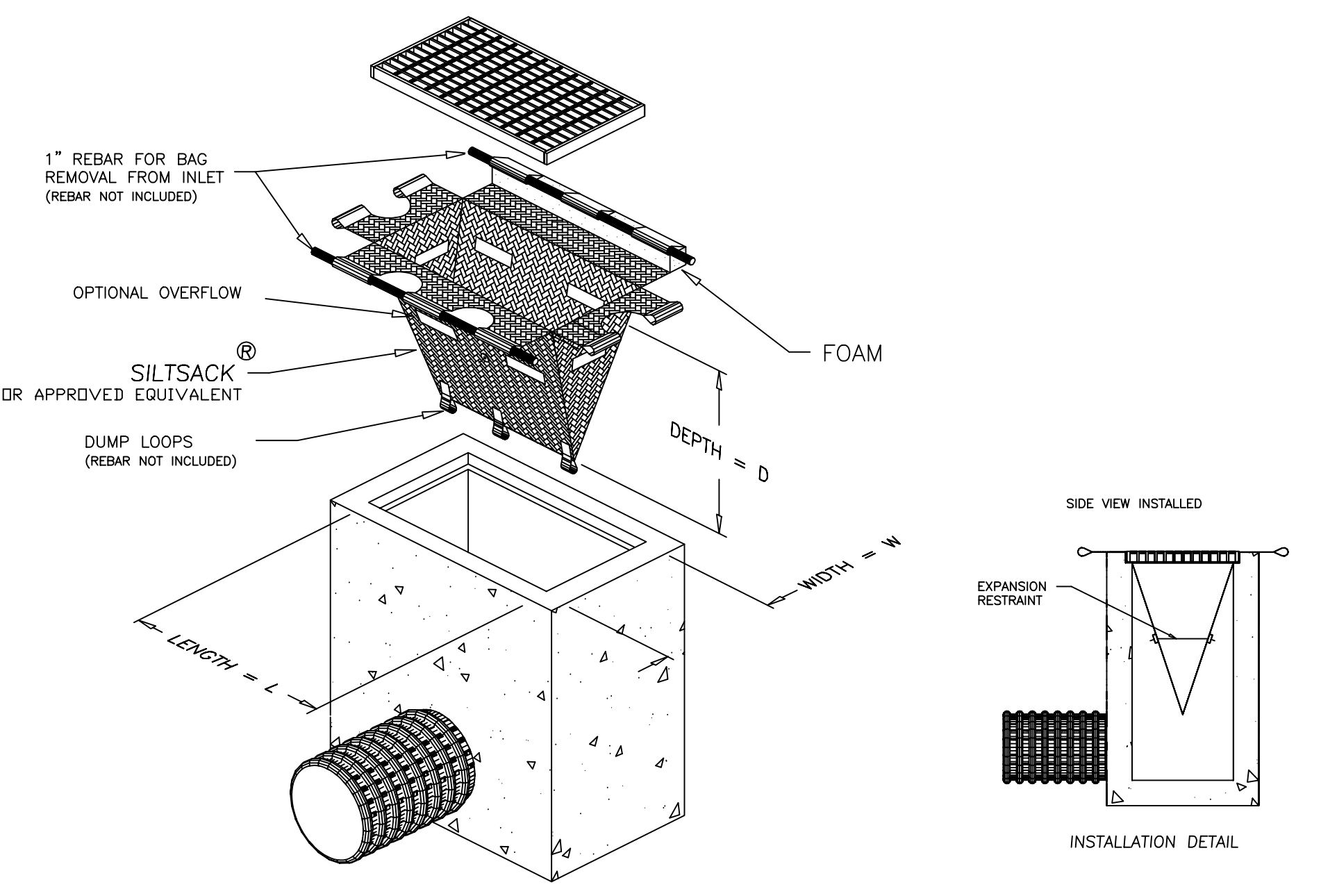
Abbreviations:
PVC - Polyvinyl Chloride Pipe Schedule 40 HDPE - High Density Polyethylene Pipe RCP - Reinforced Concrete Pipe (Class 5)



BITUMINOUS CONCRETE PAVEMENT DETAIL
NOT TO SCALE



STAKED HAYBALE/SEDIMENTATION CONTROL FENCE DETAIL
NOT TO SCALE



TEMPORARY CATCH BASIN SEDIMENTATION CONTROL (TYP.)
NOT TO SCALE

NOTE: TEMPORARY INLET PROTECTION TO BE REMOVED AFTER CONTRIBUTING DRAINAGE AREA HAS BEEN ESTABLISHED.

Revisions	Date	By	Description
1	5/13/05	TW	Revisions per Town Comments
2	5/23/05	EV	Revised Underdrain Piping

Prepared For:
Town of Marion
2 Spring St.
Marion, MA
02738
Phone: 508-748-3500