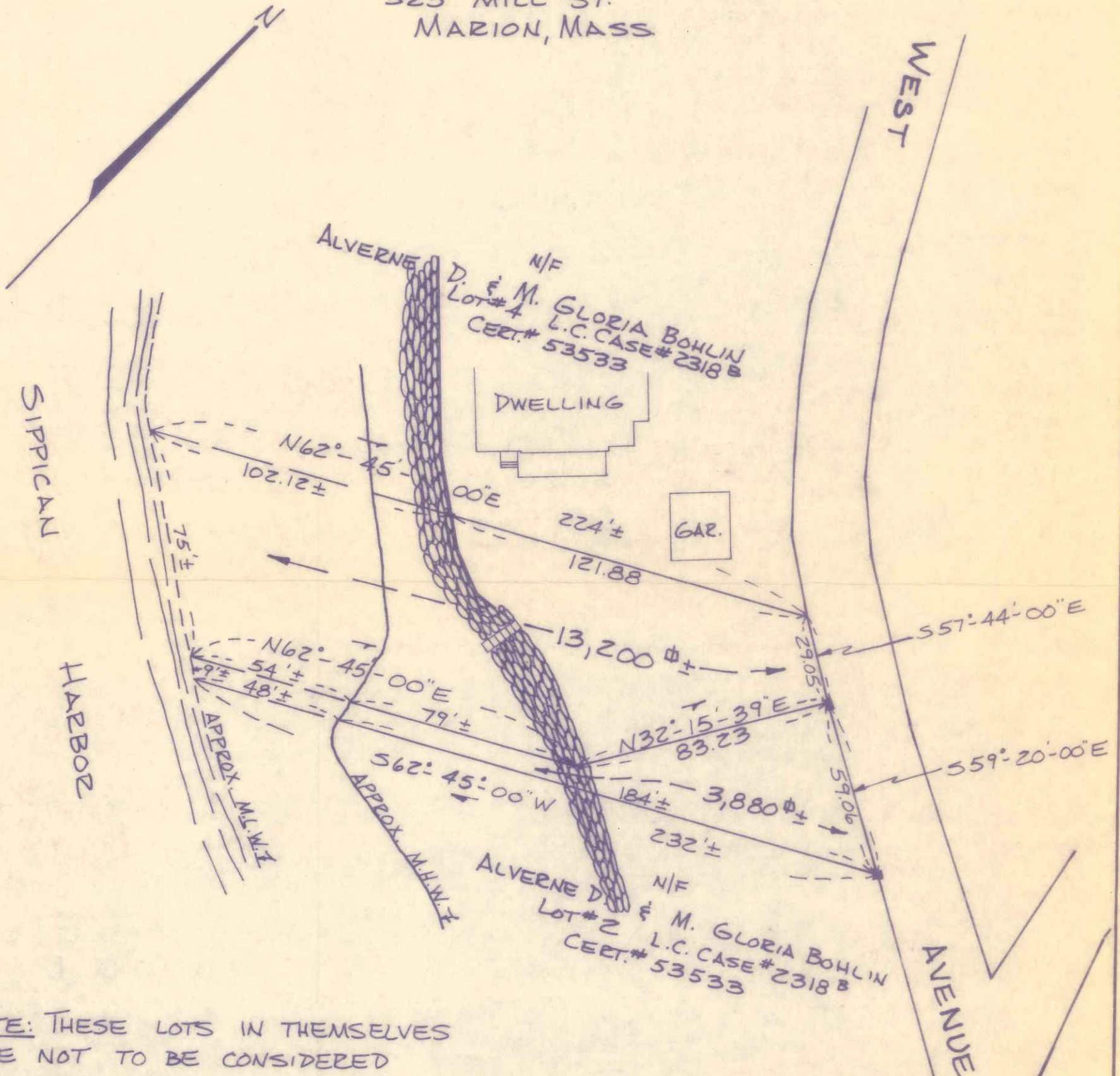


PLAN OF LAND IN
MARION, MASS.

SURVEYED FOR
ALVERNE D. & M. GLORIA BOHLIN

JUNE 4, 1976 SCALE: 1"=40'
ARTHUR C. THOMPSON, INC.
ENGINEERS & SURVEYORS
525 MILL ST.
MARION, MASS



NOTE: THESE LOTS IN THEMSELVES
ARE NOT TO BE CONSIDERED
BUILDING LOTS.

MARION PLANNING BOARD
APPROVAL UNDER SUBDIVISION
CONTROL LAW NOT REQUIRED.

DATE: June 7, 1976
Edward Bevilacqua, Chairman
Helen B. Thatcher
Thomas A. Nye
Harold B. Frye, P.E.
Katherine J. Bohlitz



Arthur C. Thompson