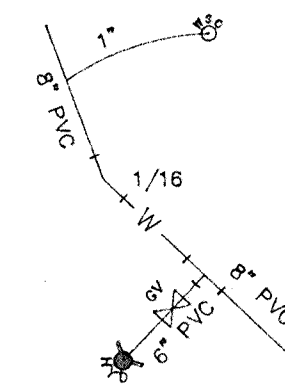


WATERMAIN LEGEND

WATER MAIN, SERVICE,
AND CURB STOP

WATER MAIN BEND —
1/8, 1/16, OR 1/32

HYDRANT, GATE VALVE AND
TEE TO MARION'S WATER
DEPT. SPECIFICATIONS



SEWERMAIN LEGEND

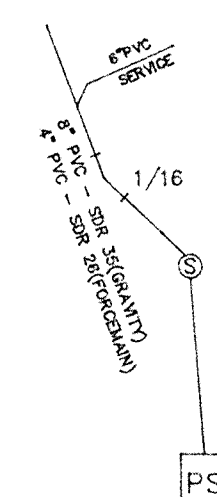
SEWER MAIN AND SERVICE
WITH TEE, WYE, & ELBOWS
AS REQUIRED.

SEWER MAIN BENDS —
1/8, 1/16, OR 1/32

SEWER MANHOLES, PIPE,
AND FITTINGS TO MARION'S
DPW'S SPECIFICATIONS.

PUMP STATION TO MARION'S
DPW'S SPECIFICATIONS

FORCE MAIN FITTINGS — SDR 26
SEWER MAIN FITTINGS — SDR 35



LEGEND

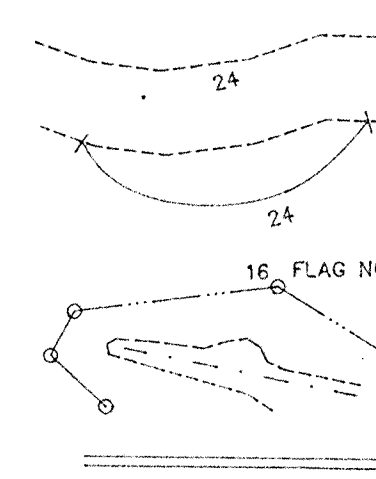
EXISTING CONTOUR

PROPOSED CONTOUR

WETLAND

PROPOSED DRAIN PIPE

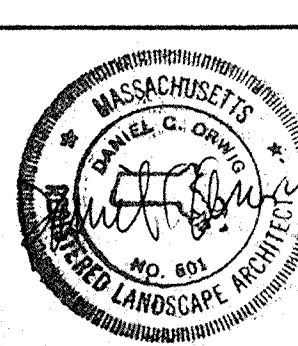
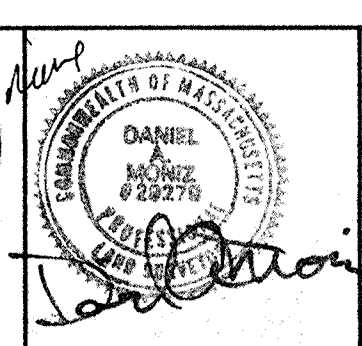
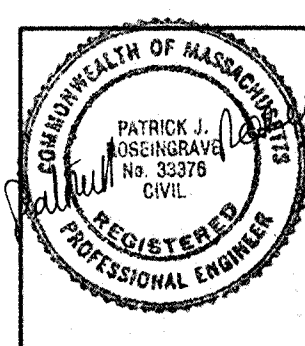
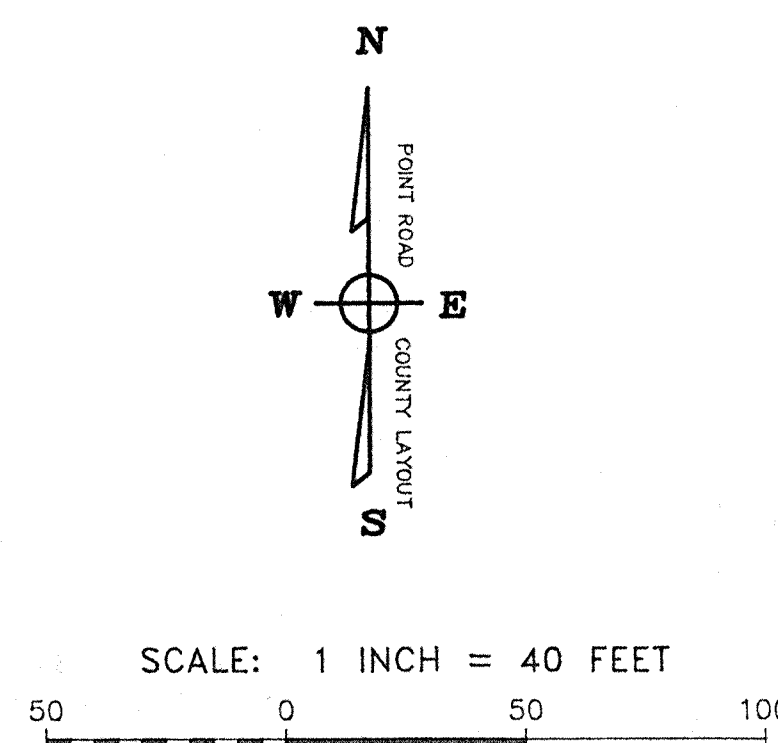
BUILDING SETBACK LINE



BENCH MARK:

DATUM FOR TOPOGRAPHIC SURVEY WAS A MASS.
STATE BENCH MARK # 4135 LOCATED ON POINT
ROAD NEAR THE ENTRANCE OF THE ESTATE OF
G.W. MITTON IN A LEDGE OUTCROP = 44.64'
N.G.V.D.

WETLAND IDENTIFICATION AS APPROVED BY THE
MARION CONSERVATION COMMISSION IN A DETER-
MINATION OF APPLICABILITY ISSUED ON SEPT.
6, 1990; AS SHOWN ON A PLAN DATED 7-11-'90
BY G.A.F. ENGINEERING, INC.



ORWIG ASSOCIATES

LANDSCAPE ARCHITECTURE - SURVEYING - ENGINEERING

9 SOUTH PASTURE LANE, P.O. BOX 2132, DUXBURY, MA. 02331 (617) 934-6039

NO.	DATE	REVISION

UTILITIES PLAN
MARION BOAT WORKS

A DEFINITIVE SUBDIVISION PLAN, MARION MASSACHUSETTS
MARION BOAT YARD REALTY TRUST, 7 NORTH SIXTH ST., NEW BEDFORD, MA., OWNER

SHEET NUMBER
10A
OF 24 SHEETS
DATE: JUNE 7, '91
FILE: D:\HAM\10A