

PLAN SHOWING PROPOSED 15' WIDE
DRIVEWAY AND UTILITIES EASEMENT IN

MARION, MA.

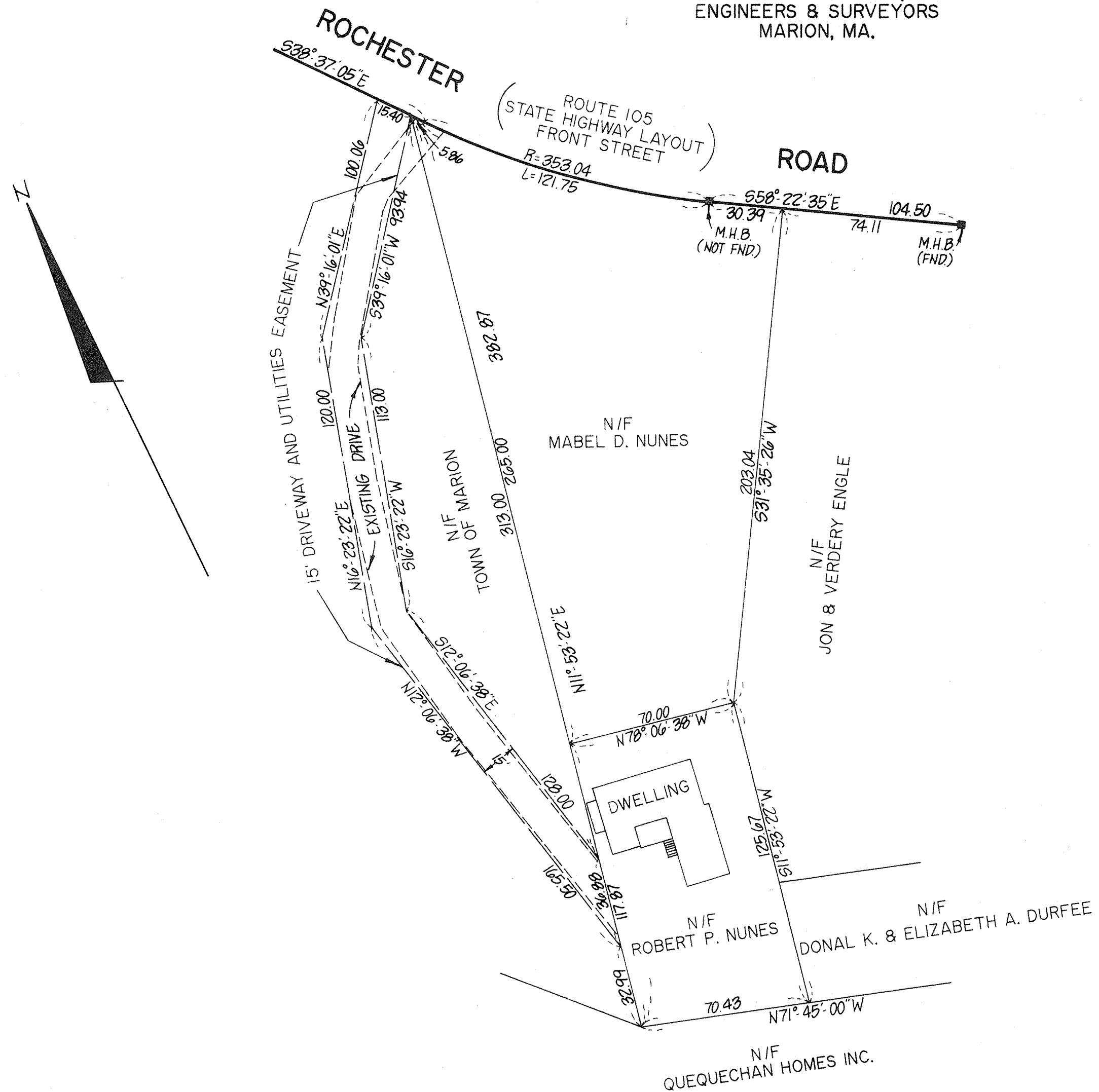
PREPARED FOR

ROBERT P. NUNES

NOVEMBER 24, 1987 SCALE: 1"=40'

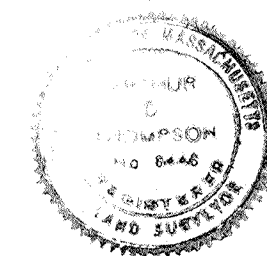
ARTHUR C. THOMPSON, INC.
ENGINEERS & SURVEYORS

MARION, MA.



"I CERTIFY THAT THIS PLAN
CONFORMS WITH THE RULES
AND REGULATIONS OF THE
REGISTERS OF DEEDS."

Robert P. Nunes
PREPARER



Arthur C. Thompson