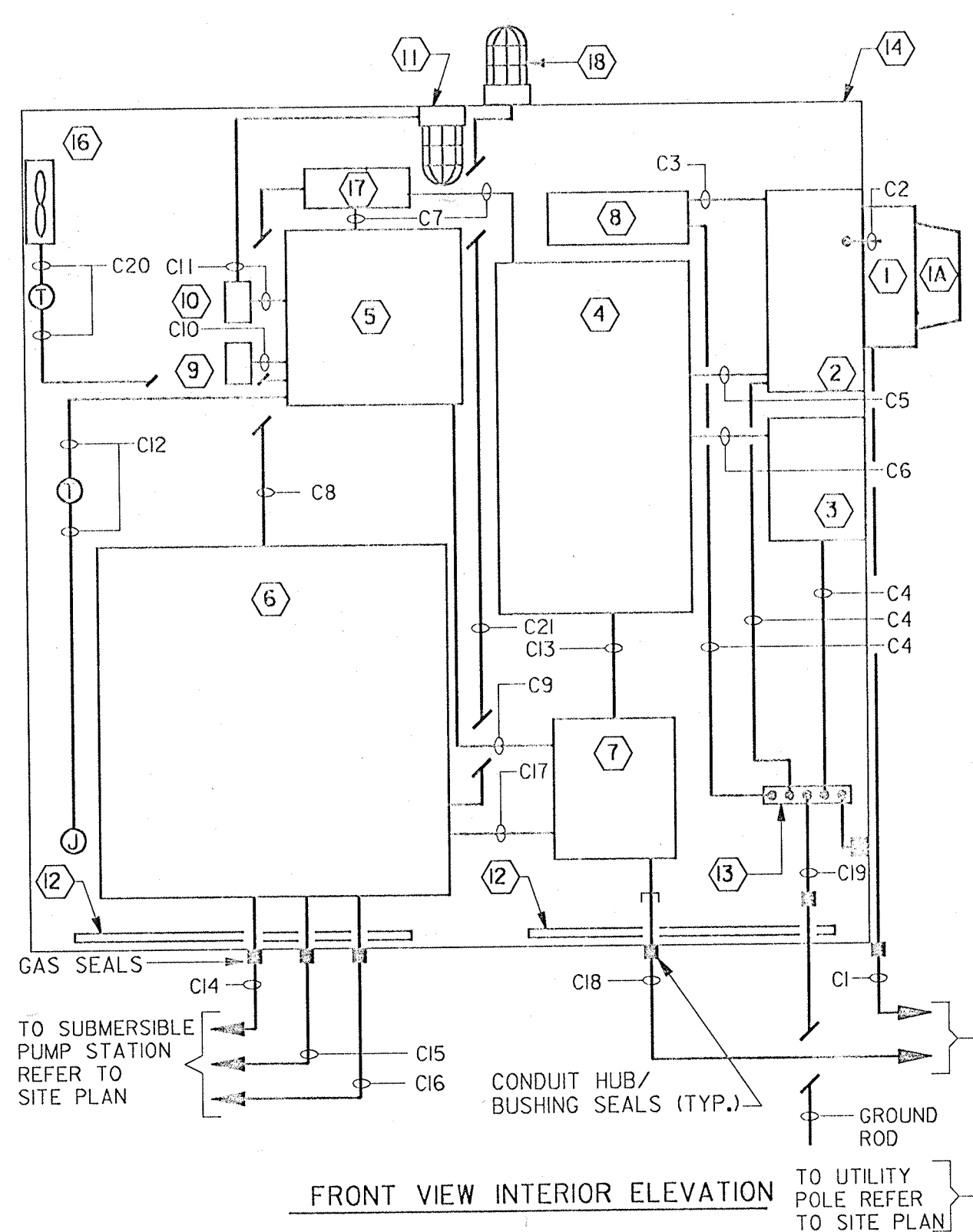


CONDUIT AND WIRE SCHEDULE					REMARKS
CONDUIT NO.	SIZE	QTY.	WIRE SIZE	WIRE SIZE	
C1	1 1/2"	3	1		120/240 VOLT POWER CO. TO METER
C2	1 1/2"	3	1		120/240 VOLT POWER TO MAIN CIRCUIT BREAKER
C3	3/4"	2	10	10G	1PHASE LINE FOR SURGE ARRESTOR
		1	10	10G	1PHASE LINE FOR PROTECTIVE RELAY
C4	3/4"	1	4		GROUND CONDUCTOR TO GROUND BUS
C5	1 1/2"	3	1	4G	CONNECTION OF NORMAL POWER TO MANUAL TRANSFER SWITCH
C6	1 1/2"	3	1	4G	CONNECTION OF EMERGENCY POWER (RECEPTACLE) TO MANUAL TRANSFER SWITCH
C7	1 1/2"	3	1	4G	POWER TO LOAD CENTER
C8	1 1/2"	3	1	4G	POWER TO CONTROL PANEL
C9	3/4"	2	12	12G	POWER TO TELEPHONE DIALER
C10	3/4"	2	12	12G	POWER TO RECEPTACLE
C11	3/4"	2	12	12G	POWER TO LIGHT
C12	3/4"	2	12	12G	POWER TO STRIP HEATERS
C13	3/4"	2	14	14	LOSS OF POWER INDICATION CONTACTS SPARE
C14	3/2"	1	3/C#1/0		PUMP NO. 1: 2 POWER 1 GROUND
C15	3/2"	1	3/C#1/0		PUMP NO. 2: 2 POWER 1 GROUND
C16	3/2"	1	19/C#1/4		CONTROL WIRING: PUMP NOS. 1 & 2, WET WELL LEVEL CONTROLS
C17	3/4"	2	#14		ALARM CONTACTS FROM CONTROL PANEL
C18	1 1/2"	-	-		TELEPHONE CONDUIT - PROVIDE PULL CORD PHONE LINE CABLE BY TELEPHONE COMPANY
C19	1"	1	4/0		GROUND CABLE TO TRI-CONFIGURATION (THREE) GROUND RODS NOTE: CONDUIT IS A CONDUIT SLEEVE WITH SEAL END BUSHINGS/HUBS
C20	3/4"	2	12	12G	POWER TO COOLING FAN
C21	3/4"	2	12	12G	POWER TO ALARM BEACON

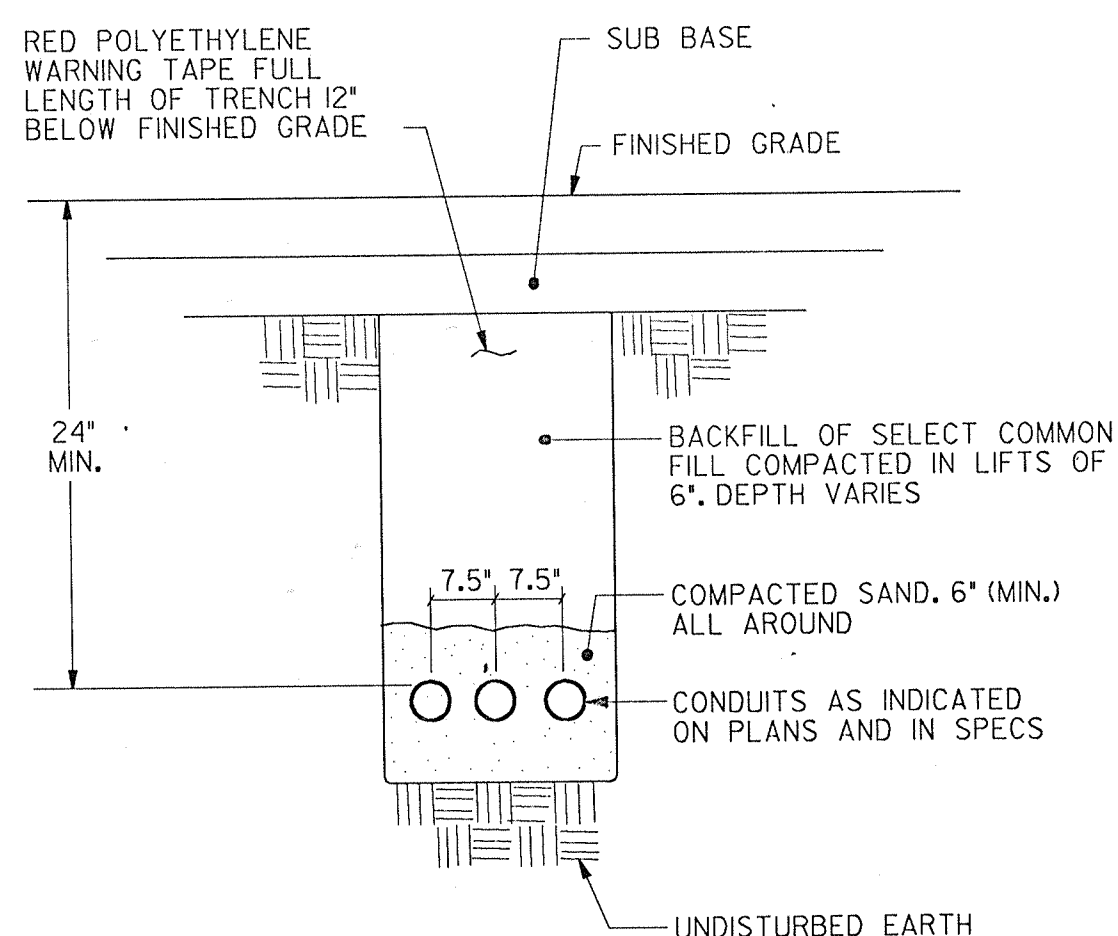
#### NOTES:

- FOR PUMPING STATION SITE PLAN REFER TO SHEET I.
- ALL WORK SHALL CONFORM TO THE LATEST EDITION OF THE NATIONAL AND LOCAL ELECTRICAL CODES. PROVIDE ALL EQUIPMENT GROUNDS AS INDICATED.
- SIZE AND/OR ARRANGEMENT OF PEDESTAL ENCLOSURE SHALL BE MODIFIED AS NECESSARY TO SUIT EQUIPMENT ACTUALLY FURNISHED.
- PROVIDE CUSTOM OPTION FOR MAIN BREAKER AND RECEPTACLE. ACCESS BY SEPARATE HINGED DOORS AS SHOWN ON SIDE OF PANEL. DEVICES SHALL BE RECESSED IN PEDESTAL CABINET. METER IS EXTERNAL TO PEDESTAL PER COM ELECTRIC. MAINTAIN NEMA 4 RATING. DOORS SHALL HAVE HANDLE WITH LOCKING PADLOCK.
- PROVIDE BLACK LAMINATED NAMEPLATES WITH WHITE LETTERING AS LABELED ON ELEVATIONS. ALSO PROVIDE "CAUTION", "WARNING" AND "KEEP OUT" SIGNS IDENTIFYING VOLTAGES, ETC.
- POWER FOR ALARM BEACON SHALL BE FROM CONTROL POWER TRANSFORMER IN PUMP CONTROL PANEL, AND WIRED THROUGH N.O. AUXILIARY CONTACT IN ALARM CIRCUIT.

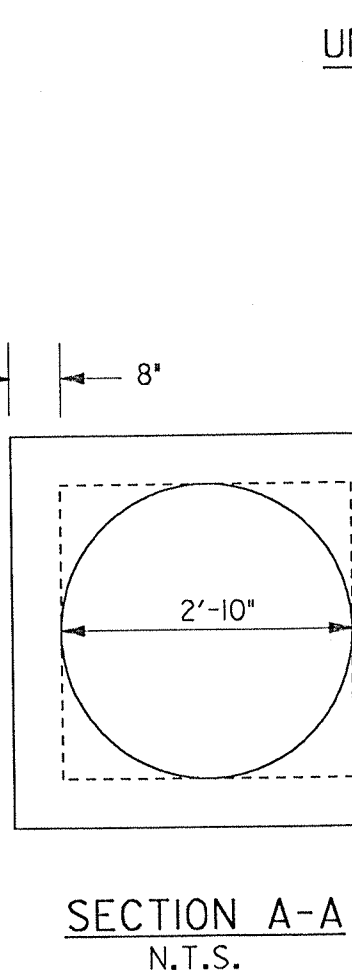
EQUIPMENT LIST		
ITEM NO.	DESCRIPTION	MANUFACTURER
①	METER SOCKET WITH LEVER TYPE BYPASS WITH CLAMPING JAWS. OBTAIN APPROVAL FROM POWER COMPANY.	MILBANK U9801-R-XL OR EQUAL
①A	POWER CO. METER BY COM ELECTRIC	N/A
②	MAIN CIRCUIT BREAKER: THERMAL MAGNETIC, MOLDED CASE, 240V-2P, 100A FRAME, 100A TRIP NEMA 1 ENCLOSURE	SQUARE D CLASS 650 OR EQUAL
③	GENERATOR RECEPTACLE: PIN AND SLEEVE RECEPTACLE, 240V, 100A, REVERSE CONTACTS	CROUSE-HINDS ARO32522 OR EQUAL
③A	GENERATOR PLUG: PIN AND SLEEVE PLUG FURNISHED AND INSTALLED UNDER DIV. 16	CROUSE-HINDS APJ0387522 OR EQUAL
④	MANUAL TRANSFER SWITCH 100 AMP, 240 VOLT, 2 POLE 1PHASE, 3 WIRE IN NEMA 1 ENCLOSURE WITH EQUIPMENT GROUND LUGS AND 1 SET OF CONTACTS (MINIMUM) FOR LOSS OF POWER SIGNAL TO TELEPHONE DIALER. PROVIDE INDICATING LIGHTS (MULTICLUSTER LED DIODE TYPE) MANUFACTURED BY R. H. STAHL CAT. NO. 8415, AND NAMEPLATES ON FRONT DOOR: "POWER ON" - RED "POWER OFF" - GREEN	ASCO CAT. NO. 386-2-100-6-2-X-C OR EQUAL
⑤	LOAD CENTER: 1PHASE, 240 VOLT, 3 WIRE, 100A FRAME, 100A TRIP, 6 SPACES-12 1-POLE CIRCUITS, COVER WITH DOOR, GROUND BAR, NEMA 1 ENCLOSURE	SQUARE D TYPE QO, CLASS #130 OR EQUAL
⑥	SUBMERSIBLE SEWAGE PUMP STATION CONTROL PANEL: FURNISHED UNDER SPECIFICATIONS - DIV. II	SPECIFICATION DIVISION II
⑦	TELEPHONE DIALER: FURNISHED UNDER SPECIFICATIONS - DIV. II PROVIDE A 4 PIN TELEPHONE JACK.	SPECIFICATION DIVISION II
⑧	SECONDARY LIGHTNING SURGE ARRESTOR AND CAPACITOR: 650 VOLT, 1PHASE, 2 POLE	GE CAT. NO. 9L15ECB001 & 9L18BB001 OR EQUAL
⑨	DUPLEX RECEPTACLE: 120 VOLT, 20 AMP, 2 POLE 3 WIRE, GROUNDING, BROWN GFI, 20 AMP, NEMA 5-20R WITH SINGLE GANG OUTLET BOX AND COVER.	HUBBELL OR EQUAL
⑩	SINGLE POLE TOGGLE SWITCH: 120 VOLT, 20 AMP, 3 WIRE, GROUNDING, BROWN WITH SINGLE GANG OUTLET BOX AND COVER	HUBBELL OR EQUAL
⑪	INCANDESCENT LIGHT FIXTURE: 150 WATT WITH LENS AND GUARD.	APPLETON CAT. NO. VC1075G-A OR EQUAL
⑫	2 STRIP HEATERS: 750 WATTS EACH, 120 VOLT, WITH THERMOSTAT. CONNECT TO BRANCH CIRCUIT WIRING.	CHROMALOX CAT. NO. OT-3007 AND ARI15A OR EQUAL
⑬	GROUND BUS: 1" X 4" X 1/4"	N/A
⑭	ELECTRICAL PEDESTAL: STAINLESS STEEL CABINET, NEMA 4, FREE STANDING, DOUBLE DOOR, LOCKING HANDLES, LOCKING SWITCH COMPARTMENTS, CLOSED CELL NEOPRENE GASKETS FOR DOORS, ANSI DARK GREEN RUST RESISTANT PAINT FINISH, CUSTOMIZED OPTION.	HENNESSY OR EQUAL
⑮	GENERATOR: FURNISHED UNDER SPECIFICATIONS DIVISION II.	SPECIFICATION DIVISION II
⑯	THERMOSTATICALLY CONTROLLED COOLING FAN ASSEMBLY: ACCESSORY TO ENCLOSURE; 120 VOLT	HENNESSY CAT. NO. 230220 OR EQUAL
⑰	4" X 4" WIREWAY; ENCLOSED, NEMA 1.	N/A
⑱	INCANDESCENT ALARM LIGHT FIXTURE: 100 WATT, WITH RED POLY CARBONATE GLOBE AND GUARD. INSTALL WITH TAMPER-PROOF SCREWS	APPLETON CAT. NO. OBV10G & VPG-IRE OR EQUAL



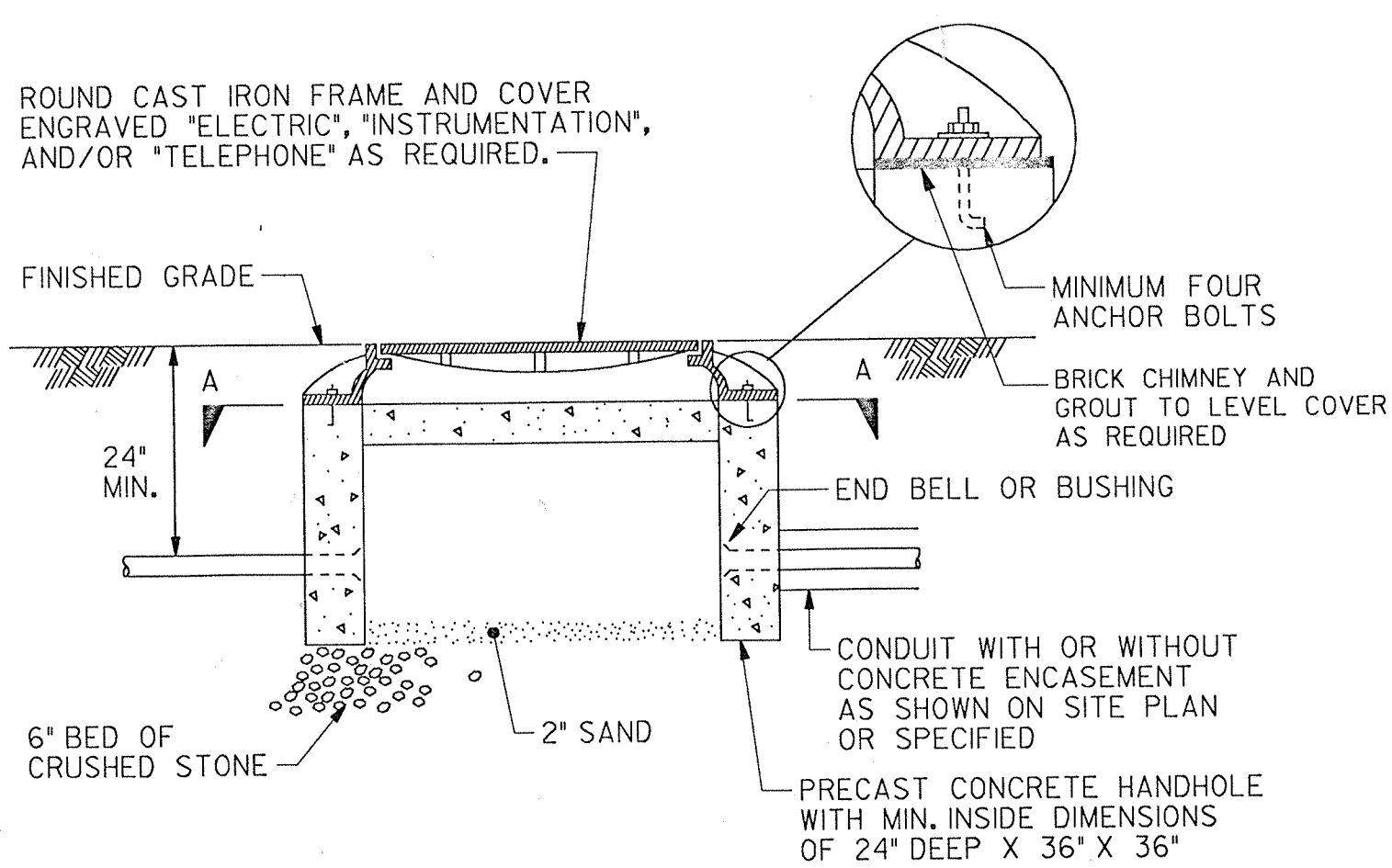
FRONT VIEW INTERIOR ELEVATION



UNDERGROUND ELECTRICAL RACEWAY

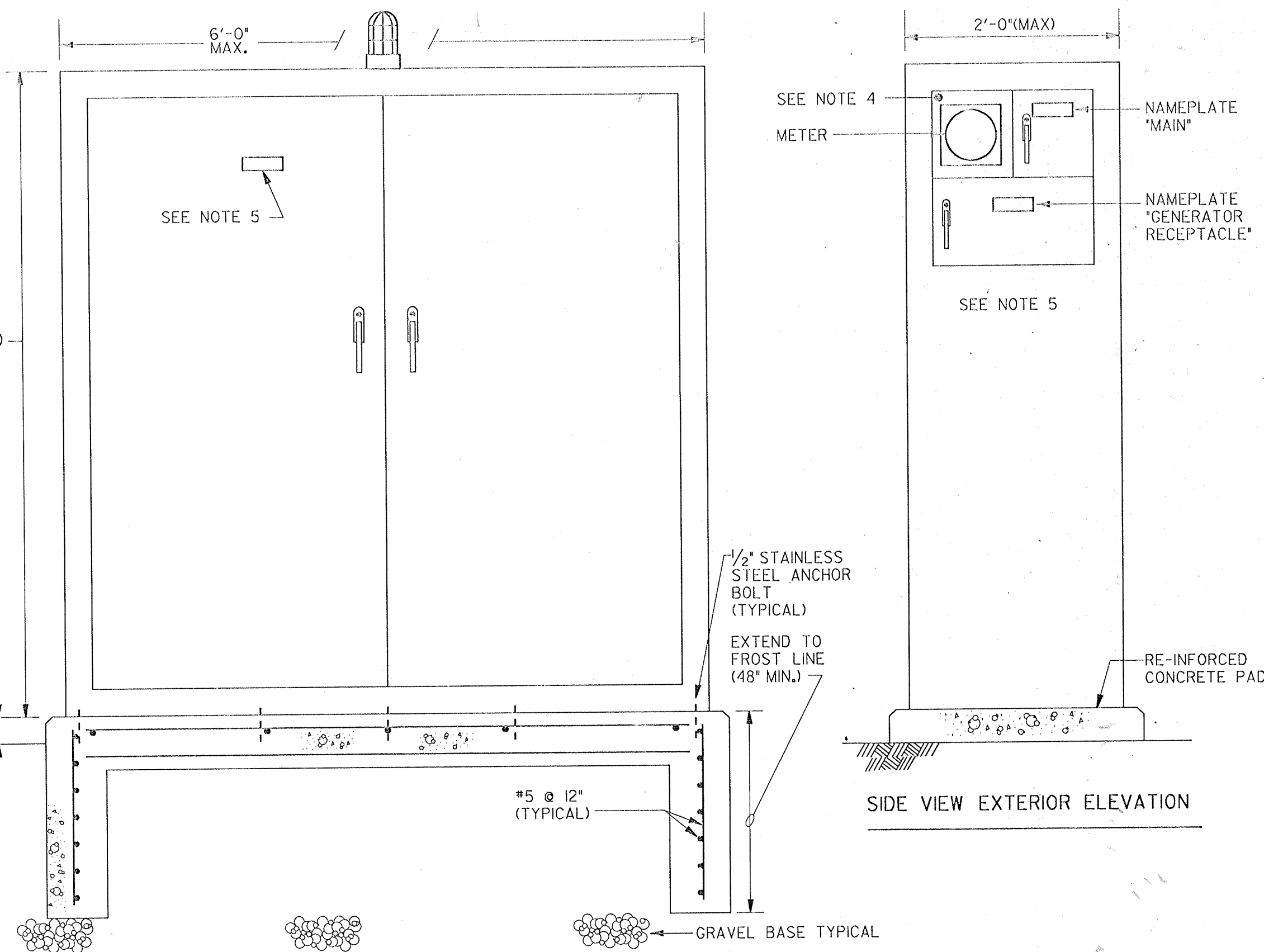


SECTION A-A  
N.T.S.

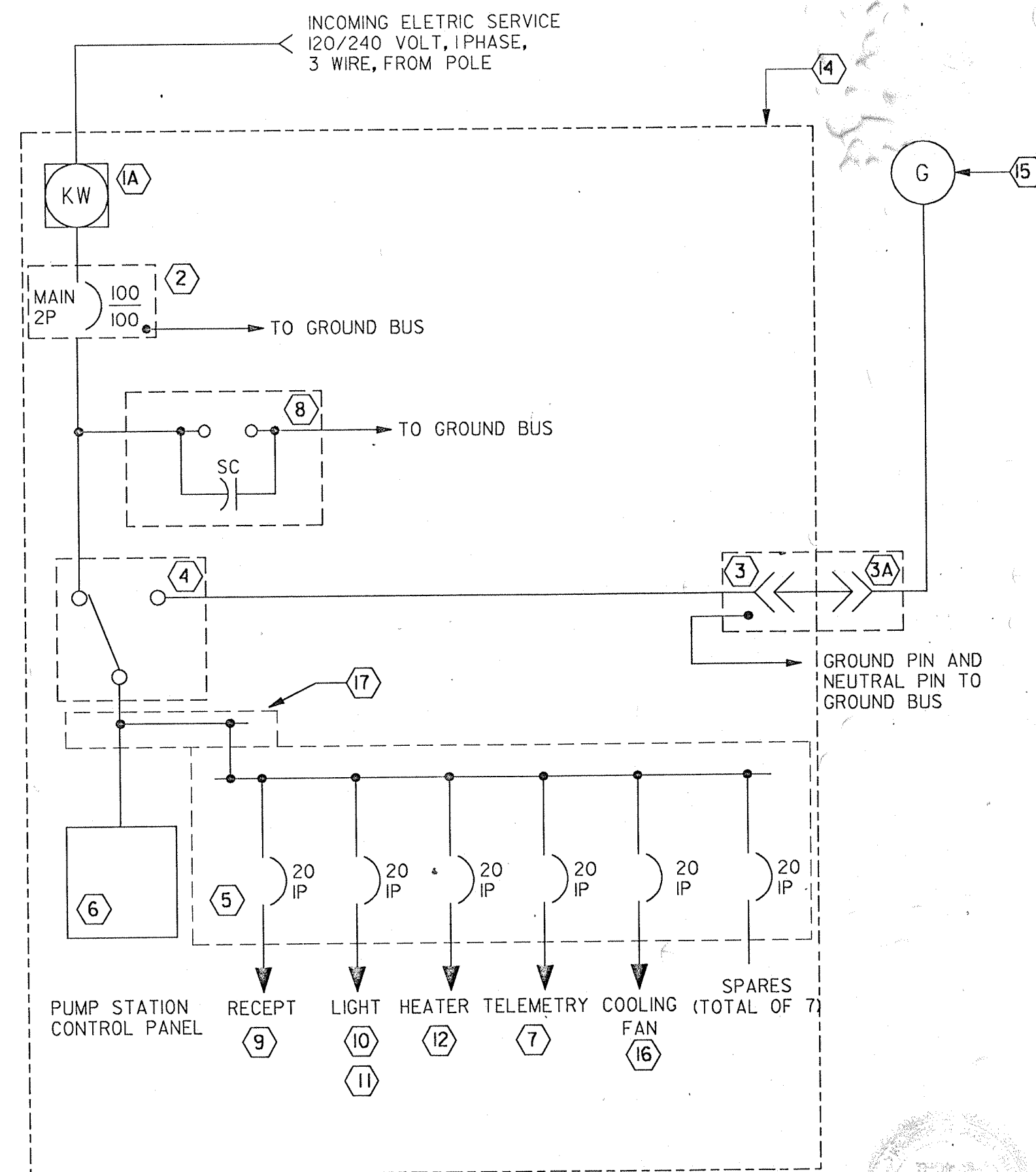


NOTE: RESTORE EXISTING ROAD, SIDEWALK, AND LAWN SURFACES.

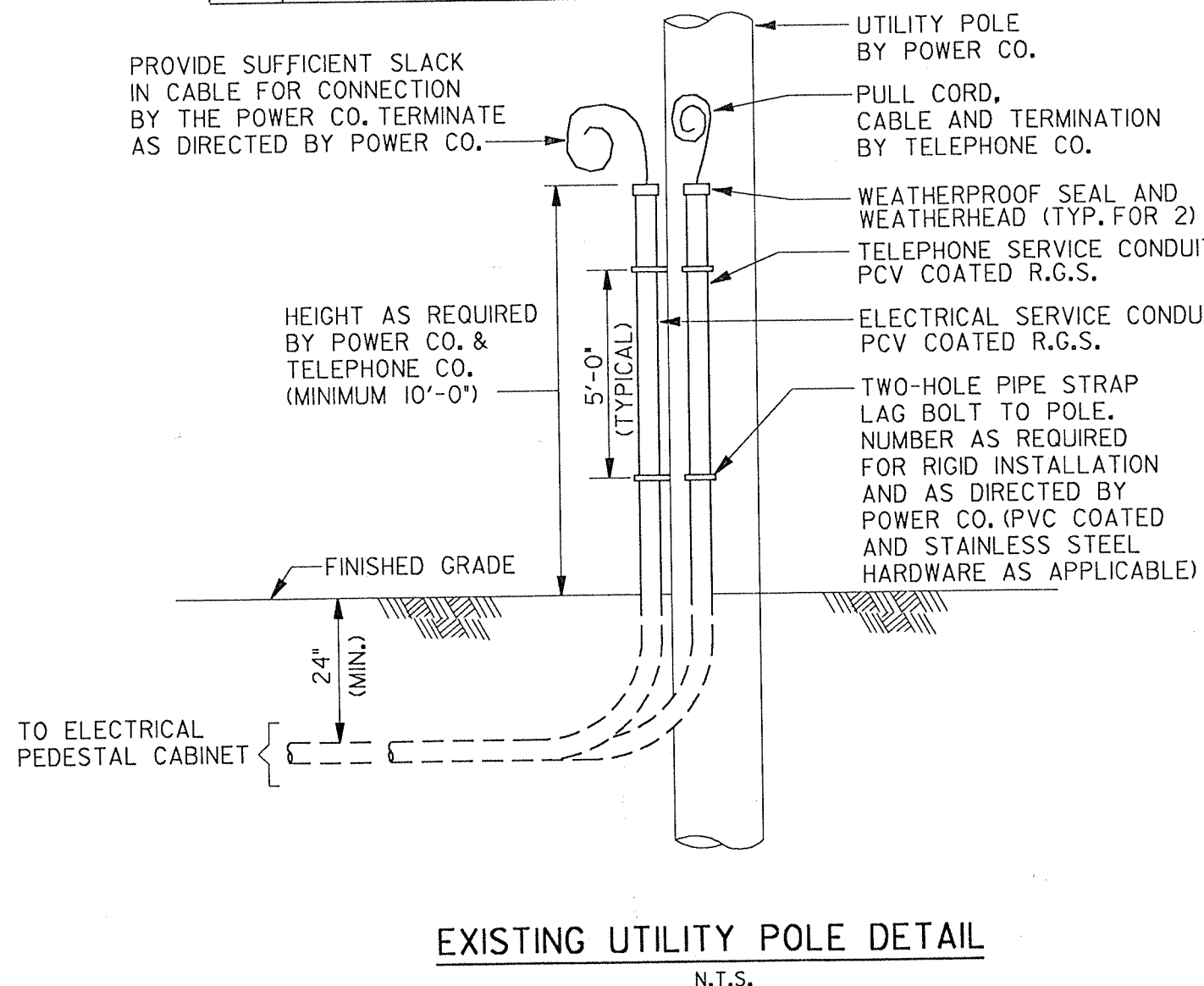
ELECTRICAL HANDHOLE



FRONT VIEW EXTERIOR ELEVATION  
OUTDOOR ELECTRICAL PEDESTAL CABINET  
N.T.S.



SINGLE LINE DIAGRAM  
NO SCALE



EXISTING UTILITY POLE DETAIL  
N.T.S.

				DESIGNED BY: <u>B. SOUBB</u>				CAMP DRESSER & MCKEE INC.				TOWN OF MARION, MASSACHUSETTS				357-51			
				DRAWN BY: <u>D. HESSON</u>								SEWER WORKS IMPROVEMENTS				SHEET NO.			
				SHEET CHK'D BY: <u>B. SOUBB</u>															
				CROSS CHK'D BY: <u>R. PRATA</u>								OAKDALE AVENUE SEWER AND PUMP STATION				PUMP STATION ELECTRICAL DETAILS			
				APPROVED BY: <u>R. PRATA</u>												5			
REV. NO.				DATE				DATE: <u>DECEMBER, 1992</u>											
DATE				DRWN				CHKD				REMARKS							