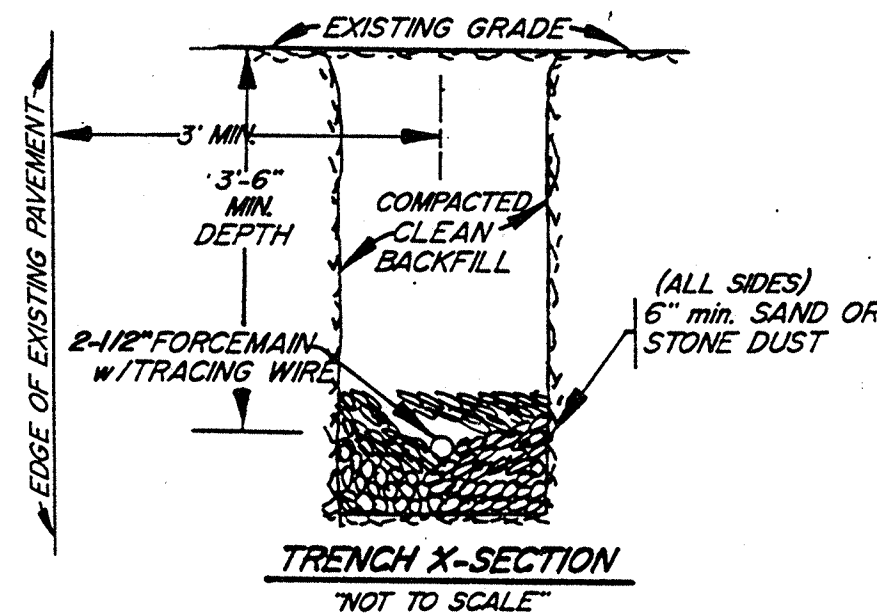
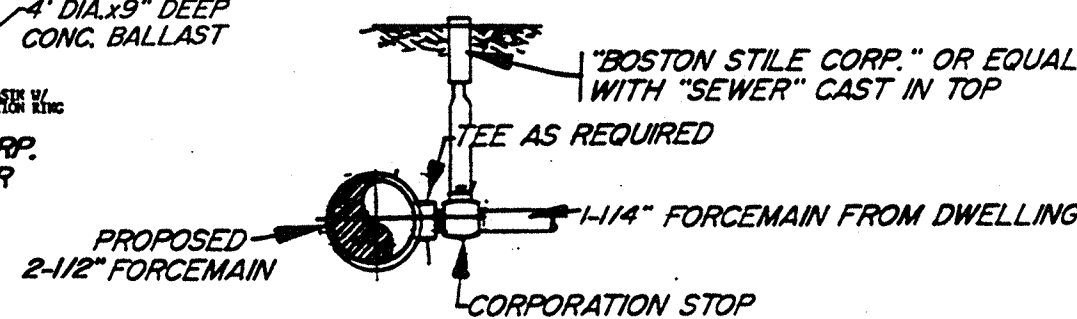


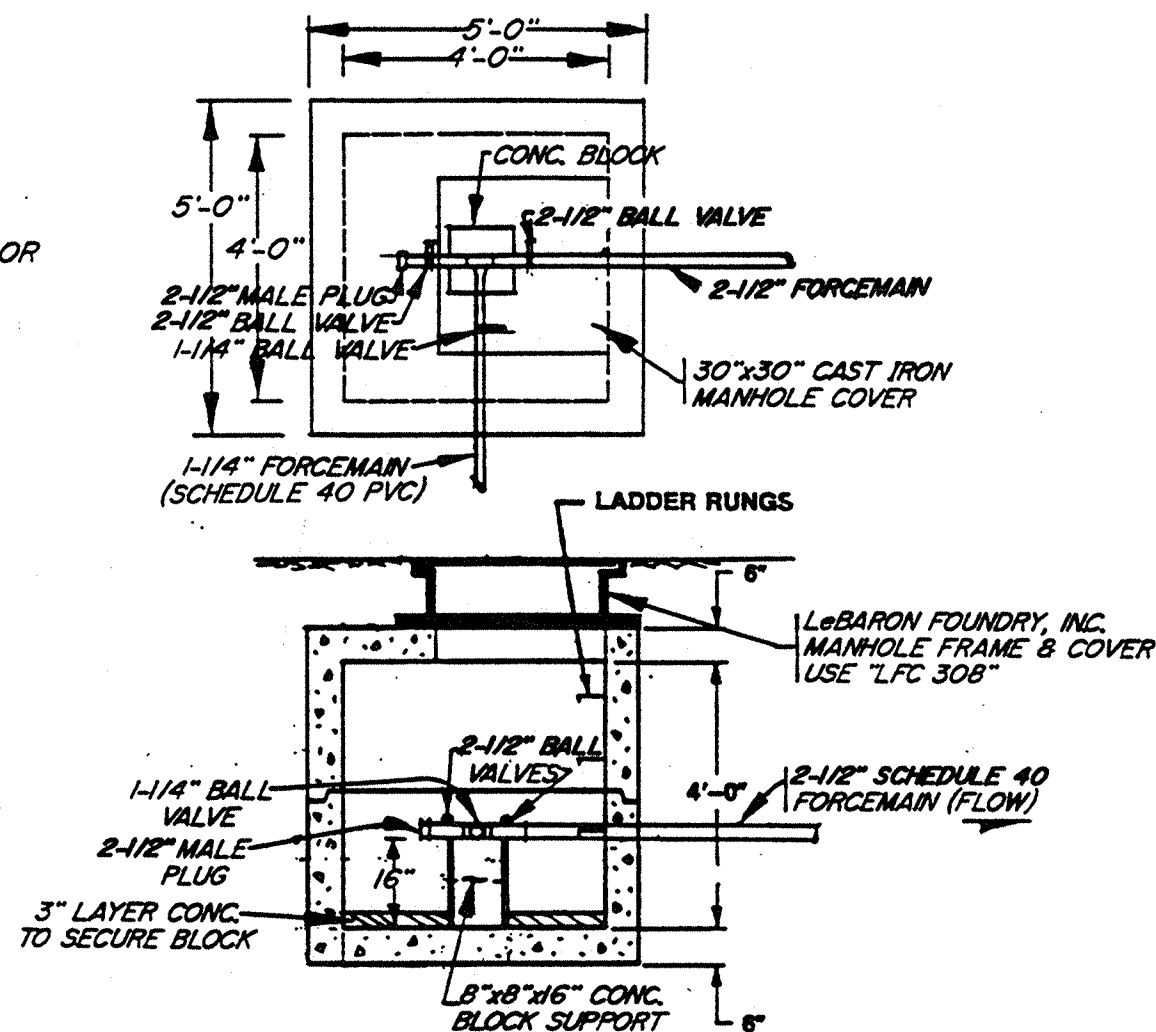
ENGINEERED SPECIALTIES CORP.
MODEL 100 SINGLE GRINDER
PUMP UNIT



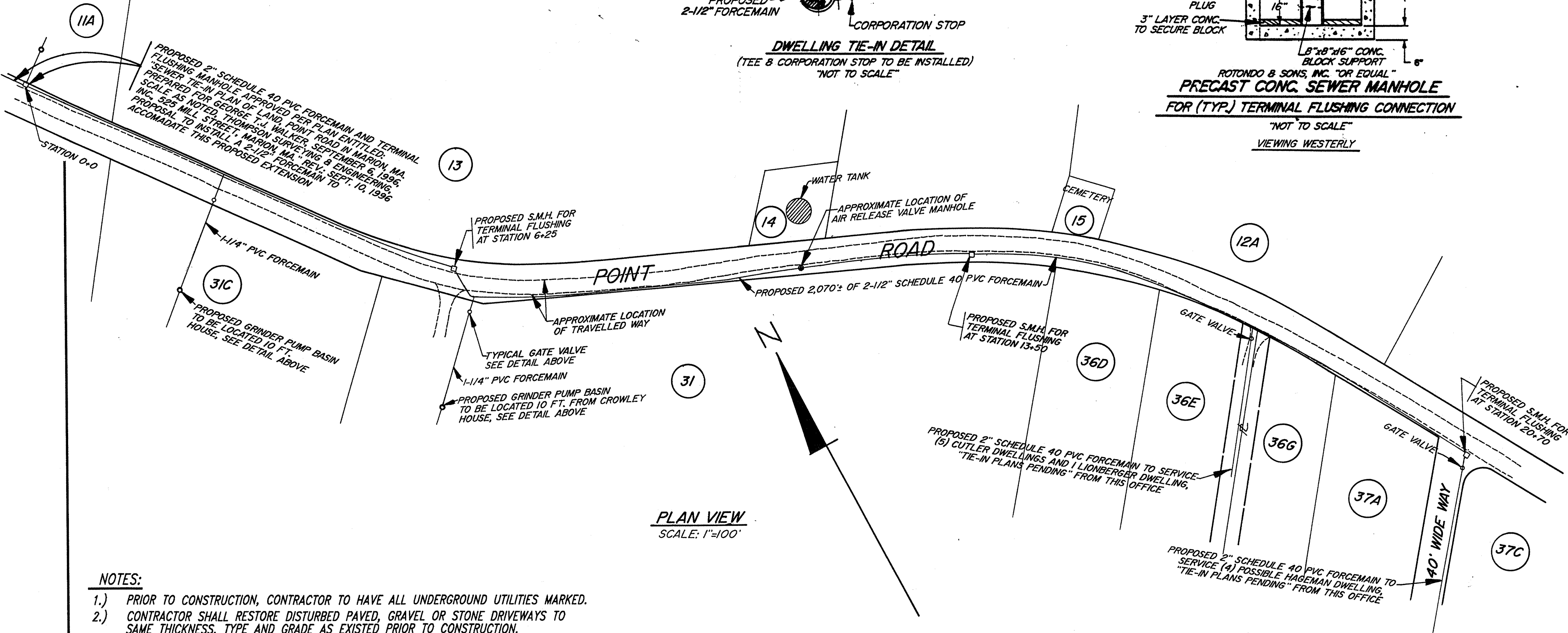
TRENCH X-SECTION
"NOT TO SCALE"



DWELLING TIE-IN DETAIL
(TEE & CORPORATION STOP TO BE INSTALLED)
"NOT TO SCALE"



PRECAST CONC. SEWER MANHOLE
FOR (TYP.) TERMINAL FLUSHING CONNECTION
"NOT TO SCALE"
VIEWING WESTERLY

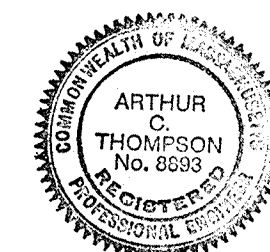


PLAN VIEW
SCALE: 1"=100'

NOTES:

- 1.) PRIOR TO CONSTRUCTION, CONTRACTOR TO HAVE ALL UNDERGROUND UTILITIES MARKED.
- 2.) CONTRACTOR SHALL RESTORE DISTURBED PAVED, GRAVEL OR STONE DRIVEWAYS TO SAME THICKNESS, TYPE AND GRADE AS EXISTED PRIOR TO CONSTRUCTION.
- 3.) ALL DISTURBED GRASS AREAS SHALL BE LOAMED (6" MIN.), GRADED AND SEEDED.
- 4.) ALL PIPE SHALL BE SCHEDULE 40 PVC WITH WATER TIGHT JOINTS.
- 5.) ALL PIPING CROSSING WATER SERVICES SHALL BE SLEEVED 10 FT. ON BOTH SIDES.
- 6.) LIMITS OF TRAVELLED WAY SHOWN ARE TAKEN FROM COUNTY LAYOUT DECREE NO. 1091 OF 1950 AND IS NOT THE RESULT OF AN ACTUAL FIELD SURVEY BY THIS OFFICE.
- 7.) PRIOR TO CONSTRUCTION, CONTRACTOR SHALL HAVE THE EDGE OF THE LAYOUT AND ALL UTILITIES & APPLICABLE OBSTRUCTIONS DEFINED & SHOWN ON A PLAN BY THIS OFFICE.
- 8.) ALL PIPING SHALL BE PRESSURE TESTED AS REQUIRED BY THE MARION SEWER DEPARTMENT.
- 9.) PRIOR TO BACKFILLING, ALL PIPE AND CONNECTIONS SHALL BE INSPECTED BY THE MARION SEWER DEPARTMENT AND OR THE DESIGN ENGINEER.
- 10.) LOT NUMBERS SHOWN REFER TO MARION ASSESSORS MAP #6.

SEWER EXTENSION PLAN OF LAND ON
POINT ROAD IN
MARION, MA.
PREPARED FOR
PHILIP CUTLER & LOUGE NOMINEE TRUST
MARCH 14, 1997 SCALE AS NOTED
THOMPSON SURVEYING & ENGINEERING, INC.
525 MILL STREET
MARION, MA.



Arthur C. Thompson