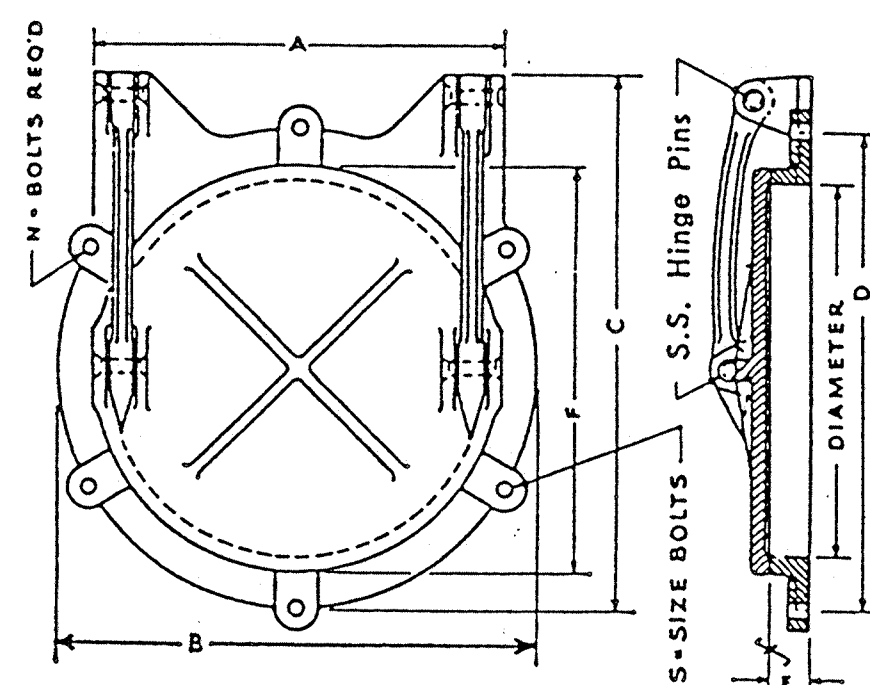
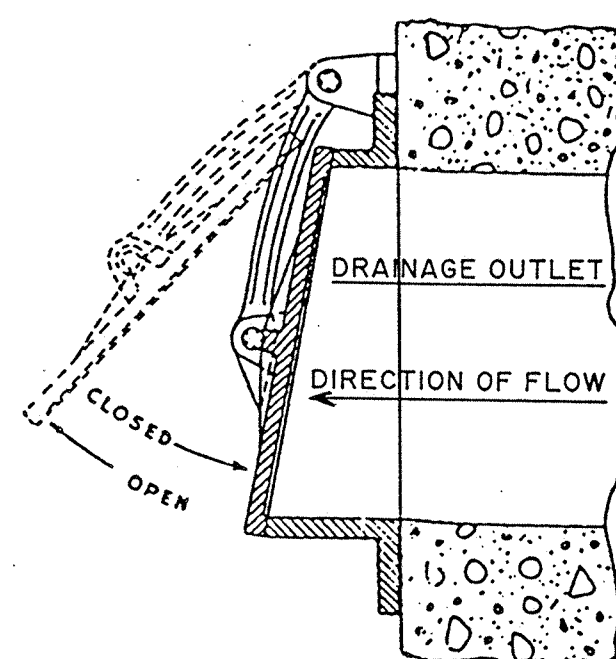


DIAMETER = 6 Inches

A = 7 Inches
B = 11 Inches
C = 13 Inches
D = 11 Inches
E = 3/4 Inches
F = 7 Inches
N = 4 Inches
S = 5/8 Inches



NOTE: Other types of gates may be used, if requested in writing by contractor and approved by town prior to ordering gate.



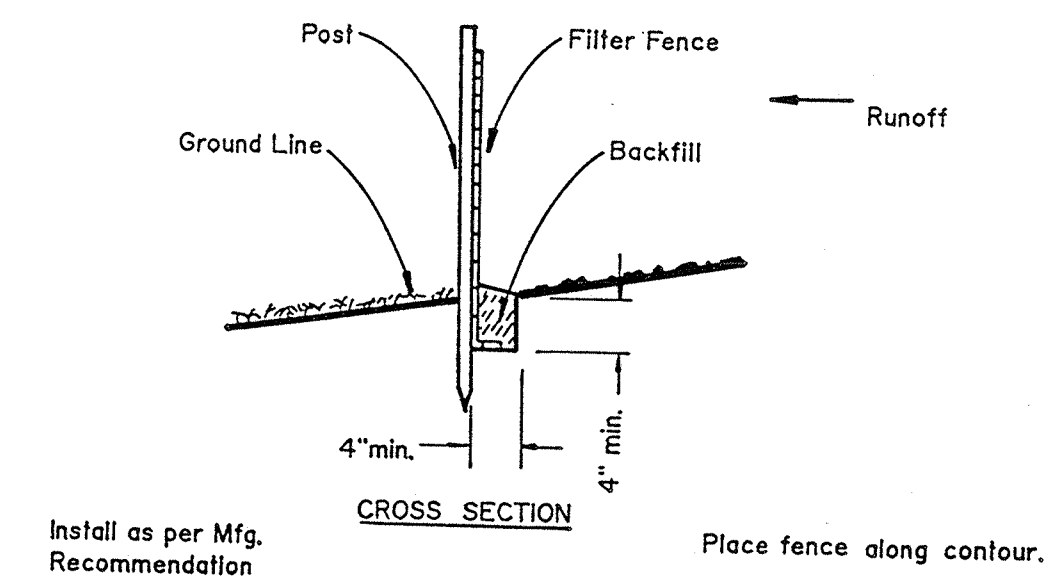
DRAINAGE GATE

NOT TO SCALE

CONSTRUCTION NOTES

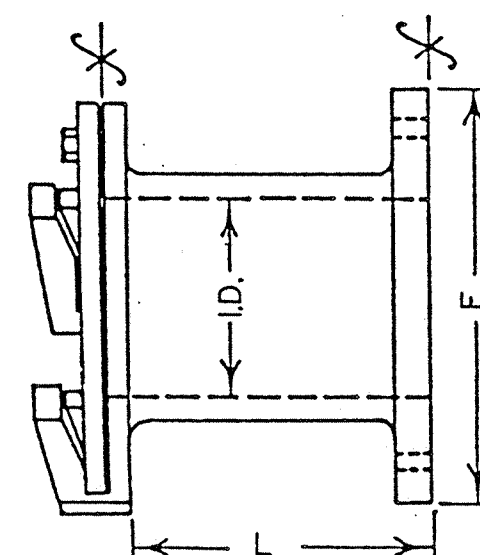
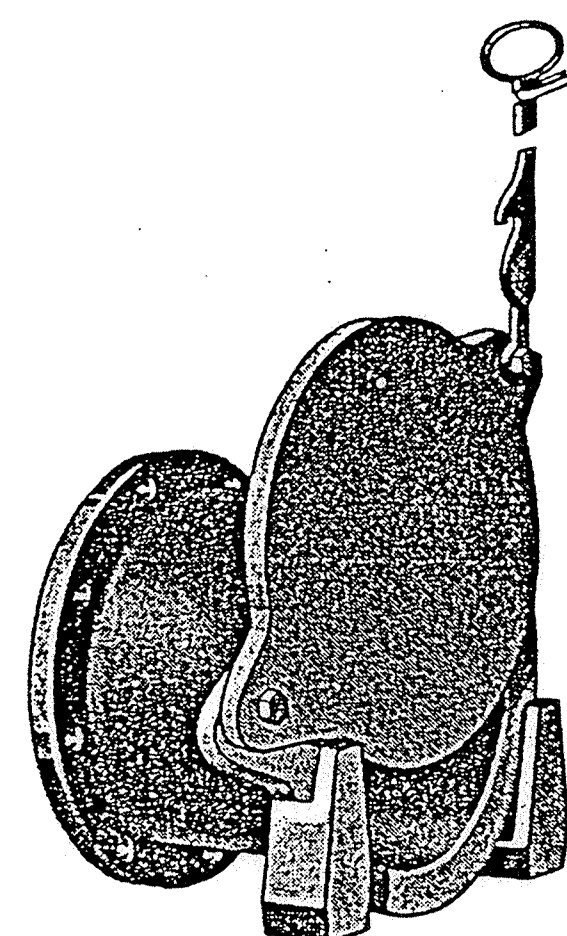
1. The Contractor shall exercise every reasonable precaution throughout the duration of the contract to prevent the silting of streams and wetlands and to prevent air and water pollution. The prevention of pollution shall be considered prior to starting any construction operation.
2. Before the start of construction the Contractor shall submit a proposal for handling sanitary wastes.
3. The Contractor shall provide positive means for collecting waste oil and grease. Such material will not be discharged onto the ground at maintenance or parking areas. All such material shall be removed from area. The Town shall not operate any equipment that is leaking fuel, oil or grease near the stream.

The location of filter fabric fencing is approximate and will be located in the field by the Engineer.
4. The site shall be prepared to control runoff and erosion prior to forecasted storms, weekends, and/or lengthy shutdowns.
5. The appropriate and/or required pollution control measures shall be in place prior to starting a construction operation.
6. Prior to ordering the precast catch basin and ductile iron pipe, the location and elevations shall be verified by the Engineer.
7. The precast catch basin shall conform to Commonwealth of Massachusetts, DPW, Standard Specifications for Highways and Bridges, 1988, Section M4.02.14.

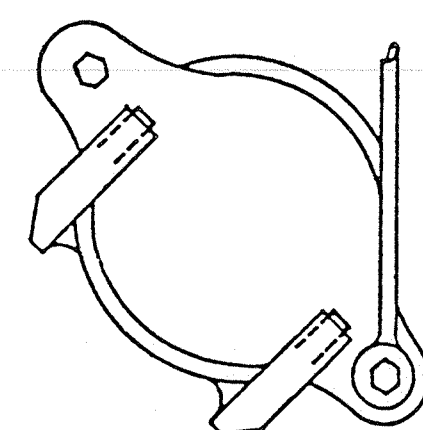


FILTER FABRIC FENCE

NOT TO SCALE

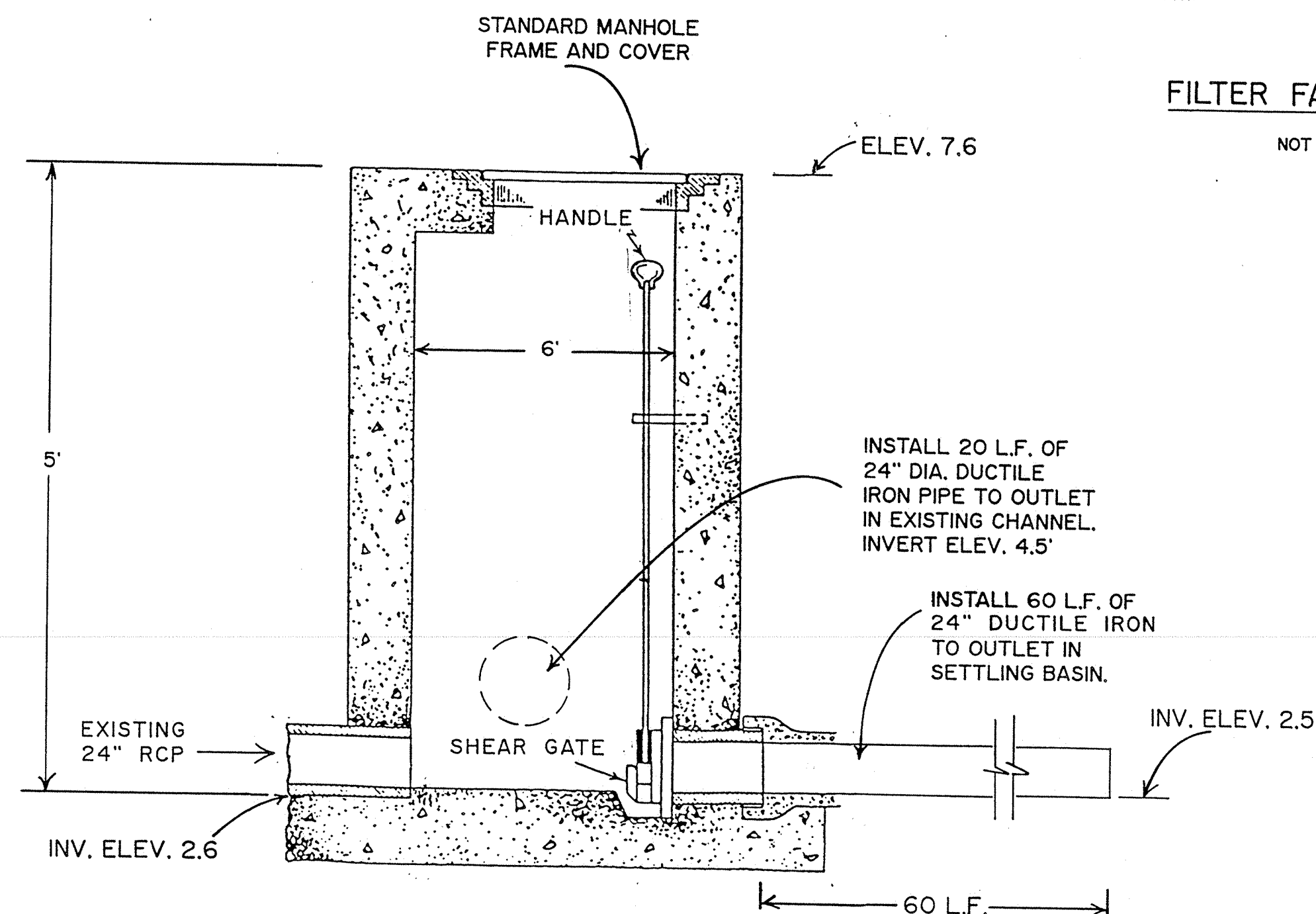


L = 11 Inches
F = 32 Inches
I.D. = 24 Inches



SHEAR GATE

NOT TO SCALE



PRECAST CONCRETE CATCH BASIN

NOT TO SCALE

SPRAGUES COVE / FRONT STREET
STORMWATER REMEDIATION PROJECT
MARION, MASSACHUSETTS
DETAILS

U. S. DEPARTMENT OF AGRICULTURE
SOIL CONSERVATION SERVICE

Designed	Date	Approved by
B. TABER/R. CURRAN	4/93	
Drawn	Date	Title
N. SHEARD	4/93	
Traced	Date	Title
C.J. GUSTAFSON	5/93	
Sheet No. 4 of 6	Drawing No.	