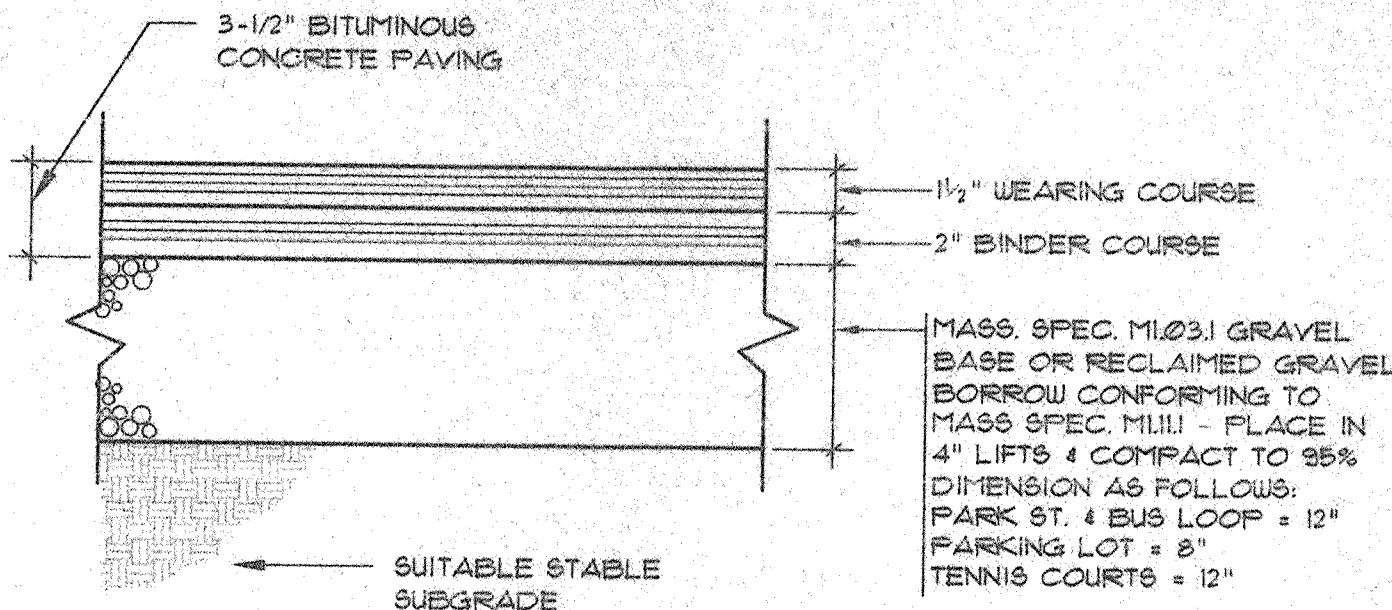


SITE LEGEND

SYMBOL	ABBREV.	DESCRIPTION
NEW	NEW	NEW WORK (DARK)
EX	EX	EXISTING WORK (LIGHT)
S	S	SANITARY SEWER
W	W	WATER PIPE
G	G	GAS MAIN
FD	FD	FOOTING DRAIN
OW	OW	OVERHEAD WIRE
PL	PL	PROPERTY LINE
EP	EP	EDGE OF PAVING
EUL	EUL	EDGE OF WETLANDS
S.B.	S.B.	SILT BARRIER
EC	EC	EXISTING CONTOUR
FC	FC	FINISH CONTOUR
CCB	CCB	CAPE COD BERM
FGC	FGC	PRECAST CONC. CURB
VGC	VGC	VERTICAL GRANITE CURB
SGC	SGC	SLOPED GRANITE CURB
BIT CONC	BIT CONC	BITUMINOUS CONCRETE
BCC	BCC	BITUMINOUS CONCRETE CURB
EP	EP	EXISTING SPOT GRADE
EP	EP	NEW MANHOLE (8" H. SEWER MANHOLE)
EP	EP	EXISTING MANHOLE
CB	CB	NEW CATCH BASIN
CB	CB	EXISTING CATCH BASIN
FH	FH	FIRE HYDRANT
GV	GV	GATE VALVE AND CURB BOX
HDCP	HDCP	HANDICAP SYMBOL (PARKING SPACE)
CTB	CTB	TRAFFIC FLOW DIRECTION
HU	HU	CONCRETE THRUST BLOCK
W	W	WETLANDS
RCP	RCP	REINFORCED CONCRETE PIPE
CPF	CPF	CORRUGATED POLYETHYLENE PIPE
FFE	FFE	FINISH FLOOR ELEVATION (FIRST FLOOR)
(S)E	(S)E	INVERT ELEVATION (S. SANITARY ETC.)
CTE	CTE	POINT OF CONNECTION TO EXISTING
		TEST BORE LOCATION
		TEST PIT LOCATION

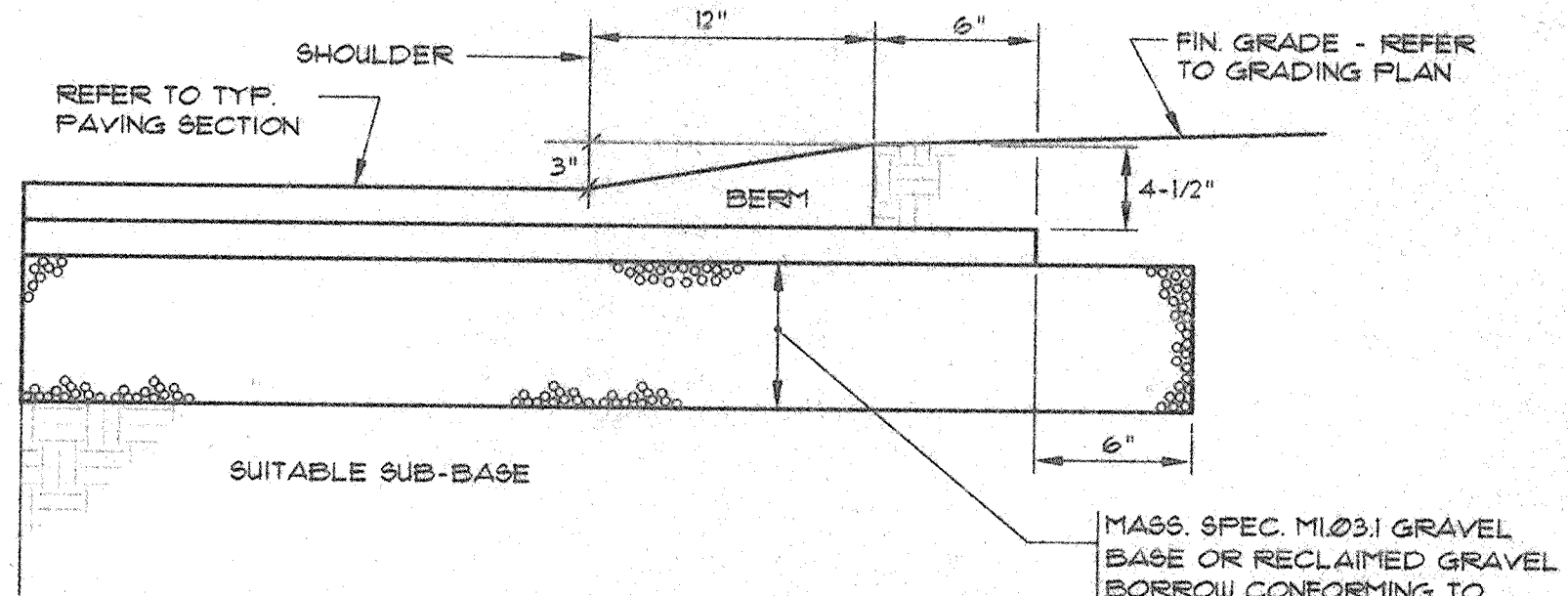
GENERAL NOTES

- REFER TO SURVEY PLAN PREPARED BY G.A.F. ENGINEERING, INC. FOR COMPLETE TOPOGRAPHIC AND UTILITY INFORMATION.
- CONTRACTOR SHALL RETAIN THE SERVICES OF A REGISTERED LAND SURVEYOR TO LAYOUT ON THE GROUND ALL NEW ELEMENTS OF WORK. THE NEW WORK IS TO BE COMPLETED, MARKED, AND LAID OUT ON THE GROUND, REVIEWED AND APPROVED BY THE ARCHITECT PRIOR TO INSTALLATION. IF ANY WORK IS INSTALLED PRIOR TO THE ABOVE REQUIREMENT BEING MET, AND IF THE WORK IS NOT SATISFACTORY IN LAYOUT TO THE ARCHITECT, CONTRACTOR SHALL REPLACE THE WORK AT NO COST.
- PRIOR TO ANY EXCAVATION, IN ADDITION TO "DIG SAFE", NOTIFY APPROPRIATE UTILITY COMPANY OR AUTHORITY TO VERIFY EXACT DEPTH AND LOCATION OF UNDERGROUND UTILITIES. LOCATIONS OF UTILITIES SHOWN ARE APPROXIMATE ONLY AND THE CONTRACTOR SHALL BE RESPONSIBLE TO LOCATE AND PROTECT UTILITIES IN THE FIELD WHETHER OR NOT SHOWN ON THE DRAWINGS.
- THE DOCUMENTS MAY INDICATE RESULTS OF BORINGS AND/OR TEST PITS. THESE INVESTIGATIONS AND RESULTANT INTERPRETATIONS WERE MADE FOR THE SOLE PURPOSE OF PROVIDING DESIGN DATA FOR THE USE OF THE DESIGN TEAM ONLY. INTERPRETATION OF THE DATA FOR PURPOSES OF CONSTRUCTION IS THE SOLE RESPONSIBILITY OF THE CONTRACTOR. DURING THE COURSE OF CONSTRUCTION, ALL INTERPRETATIONS OF SOIL SUITABILITY SHALL BE MADE BY THE ARCHITECT. THE DECISION OF THE ARCHITECT SHALL BE FINAL AND BINDING ON THE CONTRACTOR.
- REFER TO THE SPECIFICATIONS. IN ADDITION TO THOSE REQUIREMENTS, SITE PREPARATION SHALL ALSO INCLUDE THE FOLLOWING:
 - IN THE COURSE OF INSTALLING THE UNDERGROUND UTILITIES, REMOVE ANY ABANDONED FOUNDATION, UTILITY STRUCTURES, ETC., ENCOUNTERED WHICH INTERFERE WITH THE UTILITY WORK. ALL SUCH STRUCTURES SHALL BE COMPLETELY REMOVED AND SHALL BE BACKFILLED WITH GRAVEL COMPACTED IN 3" LIFTS TO 95% COMPACTION TO 6" BELOW THE BOTTOM OF THE PIPE AND UTILITY.
 - IF DURING EXCAVATION THE TRENCH WIDTH EXCEEDS THE SUM OF THE PIPE O.D. PLUS 2'-0" FACE AND COMPACT THE FILL TO 12" ABOVE THE PIPE AND RE-EXCAVATE TO REQUIRED GRADES.
 - AT THE POINT WHERE BULK EARTH MOVING HAS BEEN COMPLETED TO THE SUBGRADE LEVEL AND PRIOR TO PLACING OF UTILITIES, CURBING, OR PAVING, PROOF-ROLL THE ENTIRE AREA IN THE PRESENCE AND UNDER THE SUPERVISION OF THE SOILS LABORATORY. PROOF-ROLLING SHALL CONSIST OF MAKING NOT LESS THAN 5 PASSES OVER THE AREA WITH A VIBRATORY DRUM ROLLER WEIGHING AT LEAST 10,000 LBS. THE SOILS LAB WILL CONDUCT FIELD DENSITY TESTS AND WILL DETERMINE CORRECTIVE MEASURES TO BE DONE, IF ANY, BASED ON THE PROOF-ROLLING.
- ALL UTILITY WORK SHALL BE PERFORMED IN ACCORDANCE WITH TOWN OF MARION SPECS.
- WATER AND FIRE SERVICE PIPING SHALL BE CLASS 52 DOUBLE CEMENT LINED DUCTILE IRON WATER WITH TYTON JOINTS. FITTINGS SHALL BE 250 LB. GREY IRON CASTINGS WITH MECHANICAL JOINT ENDS. ALL BENDS, TEES, ETC., SHALL BE JOINT RESTRAINED BY THE USE OF CONCRETE THRUST BLOCKS AS DETAILED.
- STORM DRAINS 12" AND OVER SHALL BE ADVANCED DRAINAGE SYSTEMS, INC. N-12 CORRUGATED POLYETHYLENE PIPE, SMOOTH INTERIOR, WITH N-12 FITTINGS.
- SEWER PIPING AND STORM DRAINS 10" AND UNDER SHALL BE MANVILLE ASTM D-3034 SDR-35 P.V.C. SEWER PIPE WITH PUSH-ON RUBBER RING JOINTS.
- GATE VALVES SHALL BE CAST IRON BODY BRONZE MOUNTED, ITS FSI, COMPLETE WITH ROAD BOX AND CONFORMING IN EVERY RESPECT TO MEDFIELD SPECS.
- ALL BITUMINOUS CONCRETE PAVING TO BE REMOVED SHALL BE DISPOSED OF AT A DEP APPROVED OFF SITE LOCATION IN ACCORDANCE WITH ALL APPLICABLE CODES AND REGULATIONS.
- THE SILT FENCE SHALL BE INSTALLED PRIOR TO ANY WORK IN THE AREA SHOWN. THE LOCATION OF FENCE SHALL BE REVIEWED AND APPROVED BY THE ARCHITECT PRIOR TO ANY WORK BEING PERFORMED.



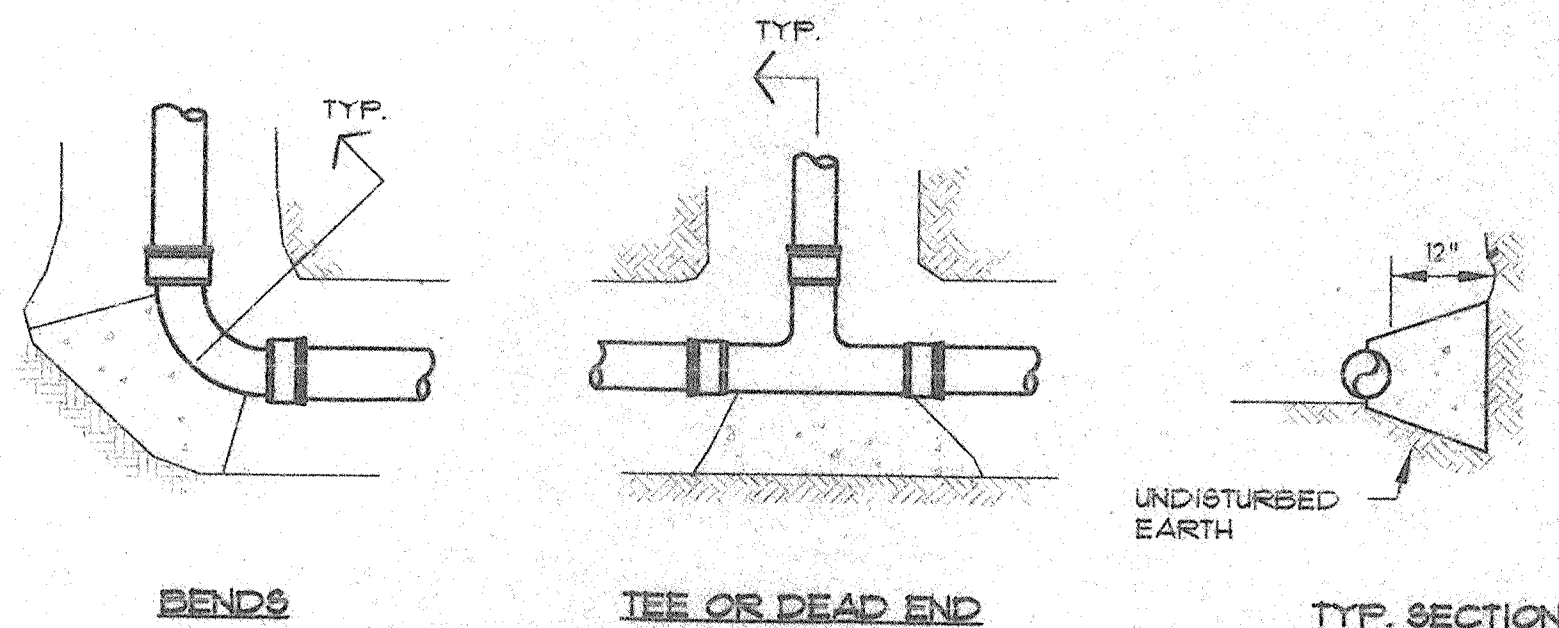
STANDARD PAVING SECTION

N.T.S.



DETAIL OF CAPE COD BERM

N.T.S.

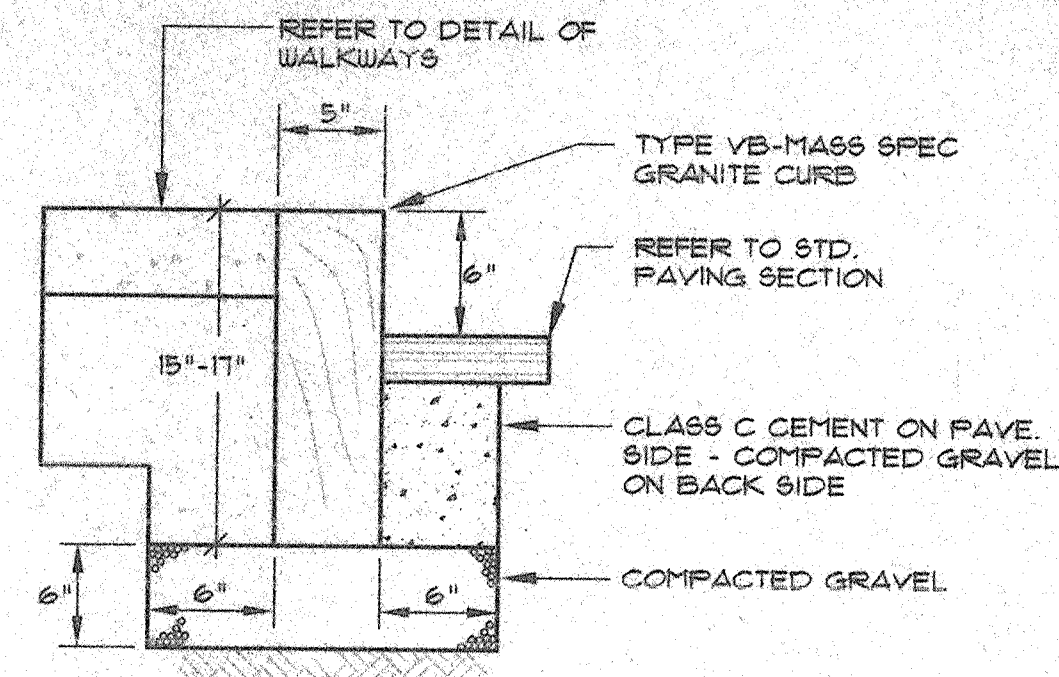


DETAIL CONCRETE THRUST BLOCKS

N.T.S.

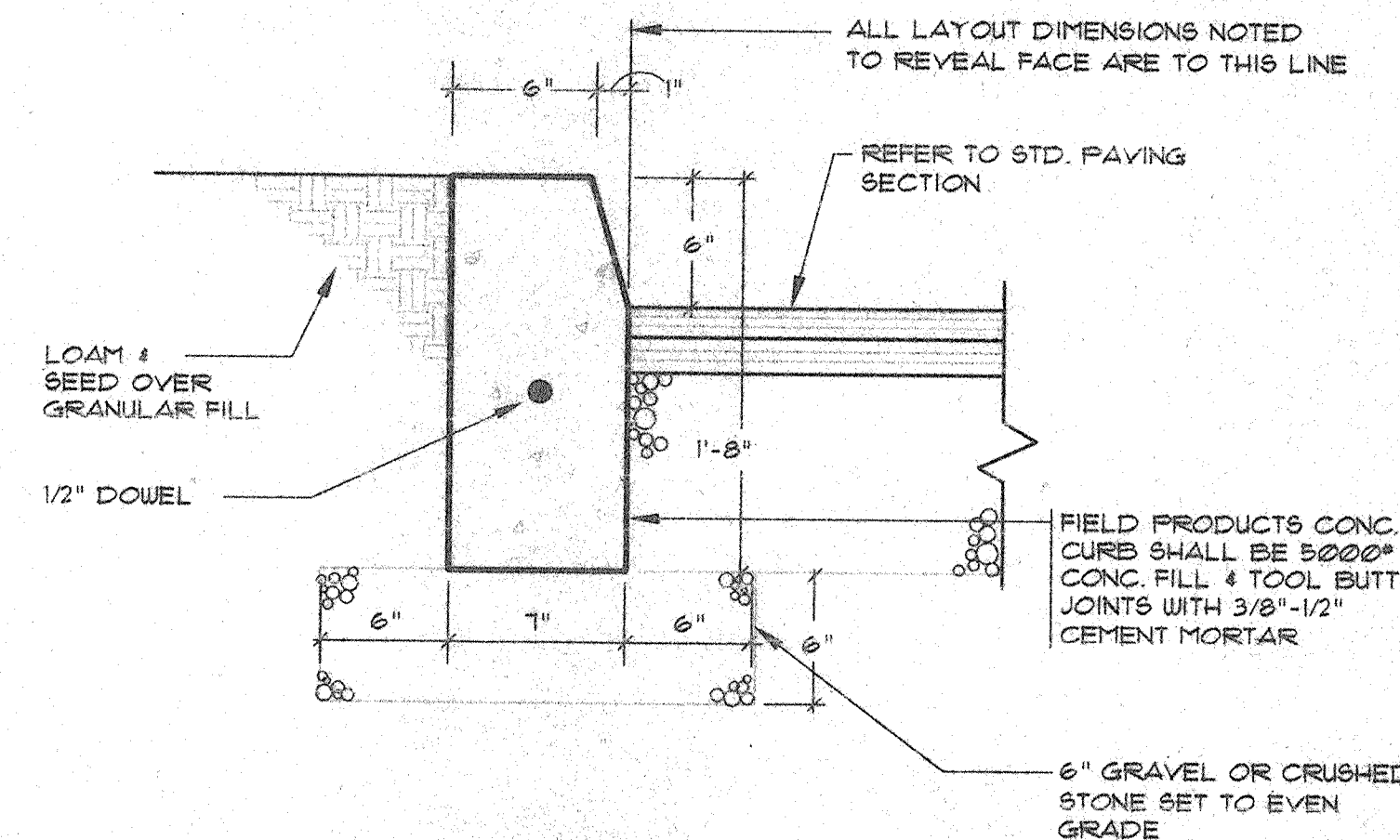
- CONCRETE SHALL BE 2500# TYPE BEARING ON UNDISTURBED EARTH
- CONCRETE SHALL NOT RUN INTO PIPE JOINTS
- ALL BLOCKS SHALL BE MIN. 1'-0" HIGH

TABLE OF BEARING AREAS (S.F.)						
SIZE OF MAIN (in.)	TEES & FLUGS	VALVES	BENDS			
			90°	45°	22-1/2°	11-1/4°
≤ 4"	2	1	2	1	1	1
6"	3	2	3	2	2	2
8"	4	3	5	3	2	2
≥ 10"	9	4	10	6	4	3



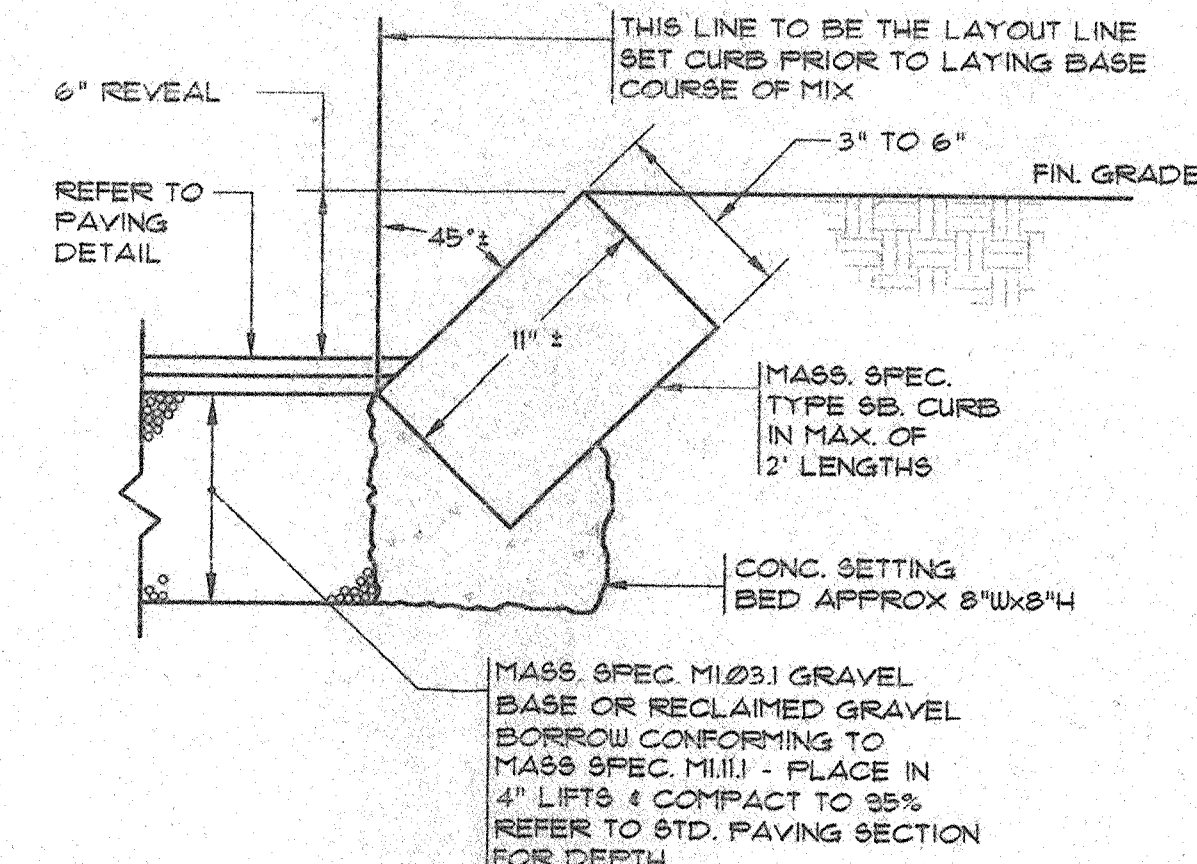
DETAIL OF VERTICAL GRANITE CURB

N.T.S.



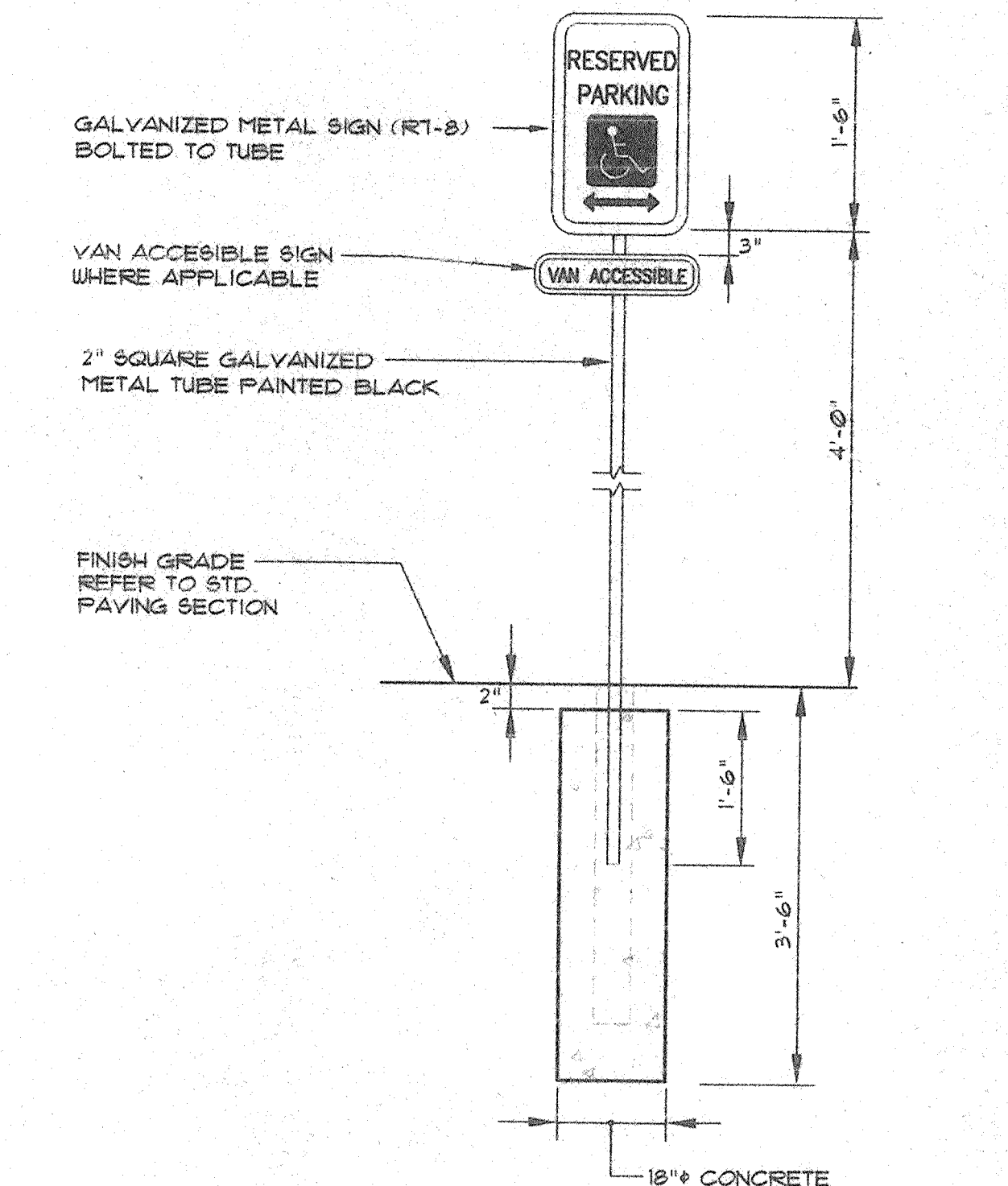
DETAIL OF PRECAST CONCRETE CURB

N.T.S.



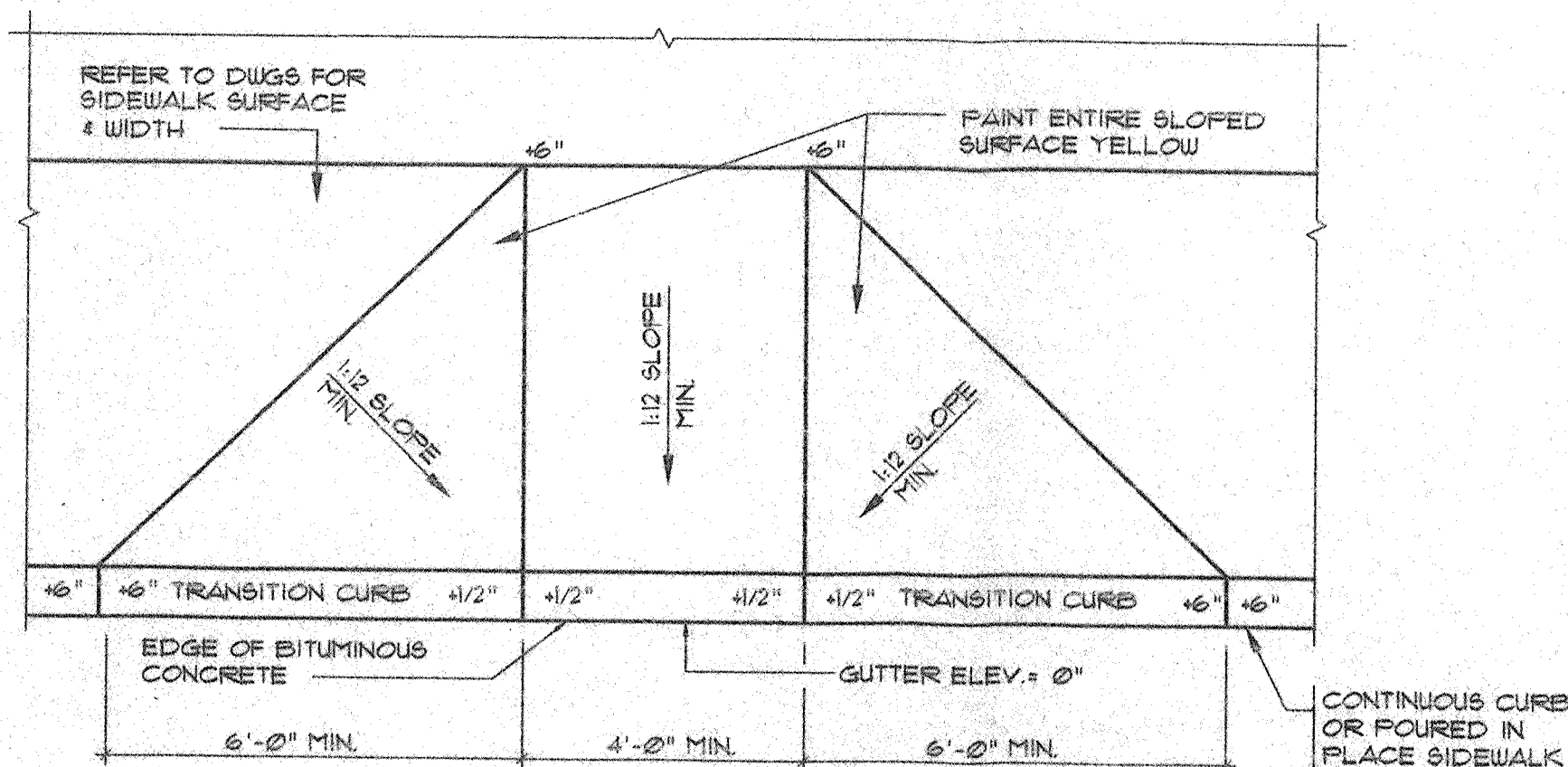
DETAIL OF SLOPED GRANITE CURB

N.T.S.



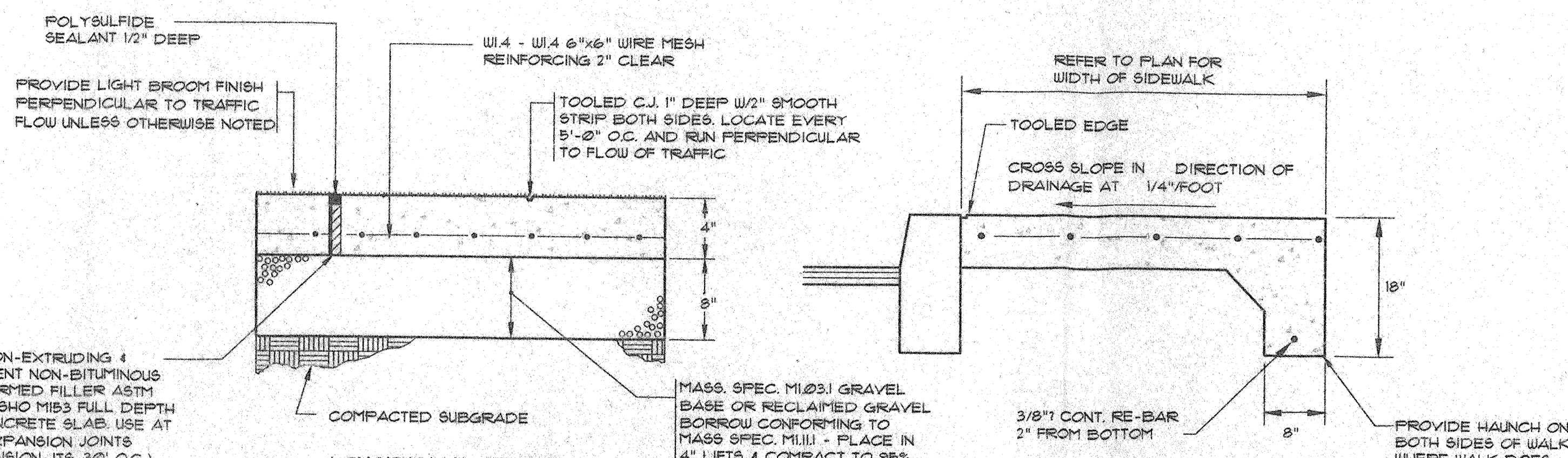
DETAIL OF HANDICAPPED PARKING SIGN

N.T.S.



DETAIL OF HANDICAP (HP) RAMP

N.T.S.



CONCRETE SIDEWALK DETAIL

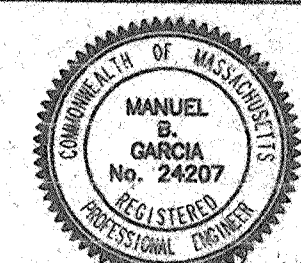
N.T.S.

STREKALOVSKY & HOIT INC.

ARCHITECTS

51 NORTH ST., HINGHAM, MA 02043

TEL: (617) 740-4000 FAX: (617) 740-4029



ADDITIONS & ALTERATIONS TO THE
SIPPICAN ELEMENTARY SCHOOL
MARION, MASSACHUSETTS

SITE DETAILS - SHEET 1

REVISIONS:

- 6/1/99 BID SET
- 6/2/99 NOI SUBMISSION

PROJECT NUMBER 98019

DATE 6/2/99

SCALE AS NOTED

DRAWN CMG

CHECK MBG

DRAWING NUMBER

C4.1