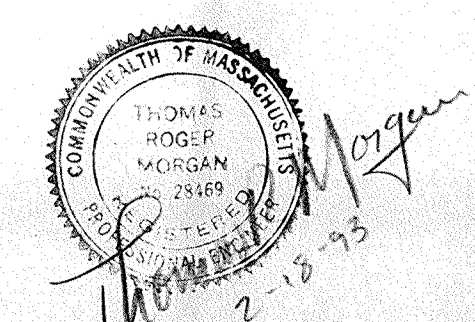
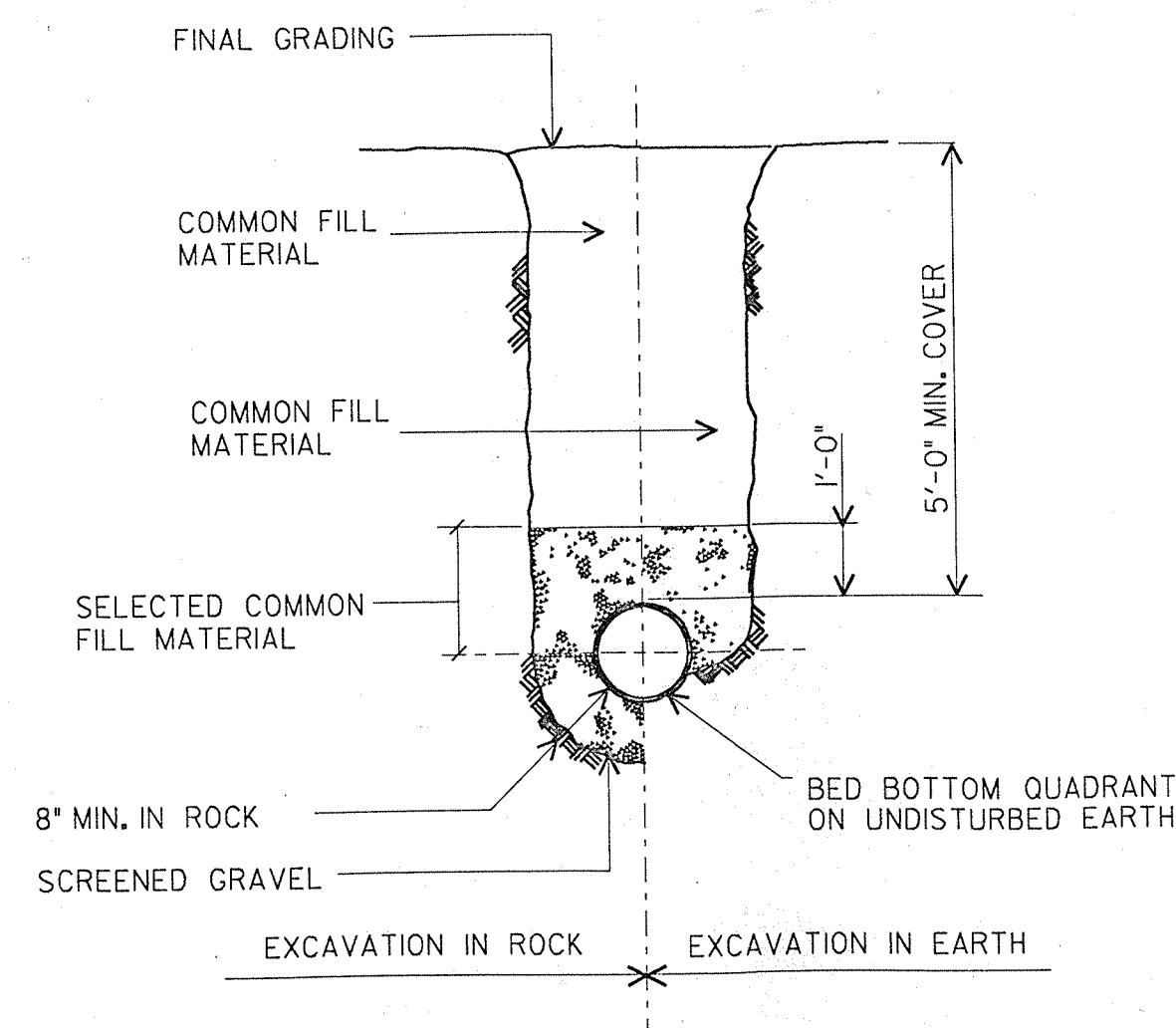
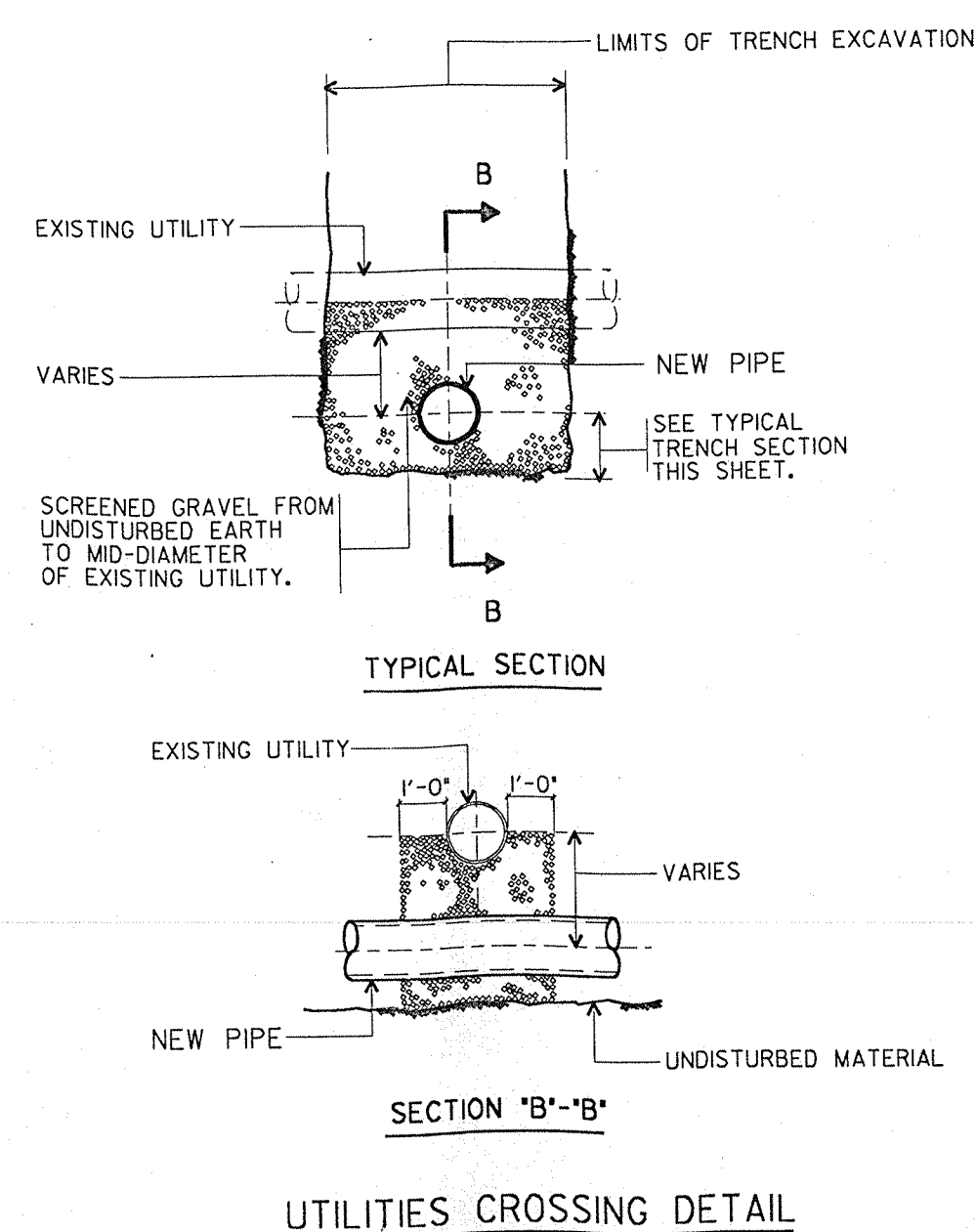


- NOTES:**
- EXISTING UNDERGROUND UTILITIES ARE NOT ALL SHOWN ON THIS DRAWING. CONTRACTOR SHALL DETERMINE LOCATION OF ALL UNDERGROUND WATER MAINS, CHEMICAL FEED LINES AND CONDUIT PRIOR TO ANY EXCAVATIONS. WATER MAIN LOCATIONS ARE SHOWN SCHEMATICALLY AND ARE NOT WARRANTED TO BE CORRECT. CONTRACTOR SHALL DIG TEST PITS TO DETERMINE ACTUAL LOCATION OF WATER MAINS.
  - NOTES PERTAINING TO NEW WORK UNDER THIS CONTRACT ARE OUTLINED THUS:
  - ALL PIPE JOINTS SHALL BE RESTRAINED. THRUST BLOCKS SHALL NOT BE ACCEPTED DUE TO HIGH PRESSURES AND DISTURBED SOIL.



						DESIGNED BY: MMG	CAMP DRESSER & MCKEE INC.	TOWN OF MARION, MASSACHUSETTS WATER WORKS IMPROVEMENTS	WEST AND EAST WELL SITE WATER MAIN AND DETAILS	PROJECT NO.
						DRAWN BY: JAC				357 - 42
						SHEET CHK'D BY: RTM				SHEET NO.
						CROSS CHK'D BY: RTM				1
						APPROVED BY: TRM				
						DATE: JANUARY 1993	environmental engineers, scientists, planners, & management consultants	CDM	PRODUCTION WELL EQUIPMENT	
REV. NO.	DATE	DRWN	CHKD	REMARKS						
										NOTE (GINGER)100,013MECH NULLJC005.DGN 357-4864