

DRIFT ROAD CULVERT & ROADWAY IMPROVEMENTS WESTPORT, MASSACHUSETTS



LOCUS MAP
(NOT TO SCALE)

GENERAL NOTES

1. EXISTING CONDITIONS PLAN DEVELOPED FROM AN ON THE GROUND SURVEY PERFORMED IN JUNE 2011 BY TIBBETTS ENGINEERING CORP.
2. THE ACCURACY AND COMPLETENESS OF EXISTING UTILITIES AS SHOWN ON THE PLANS ARE NOT GUARANTEED. IT SHALL BE THE CONTRACTOR'S RESPONSIBILITY TO DETERMINE EXACT LOCATION, SIZE, TYPE, ETC. OF ALL UNDERGROUND UTILITIES THAT MAY BE AFFECTED BY THE WORK. INFORMATION ON LOCATION OF UTILITIES SHOWN HEREIN IS BASED ON FIELD LOCATIONS WHERE VISUALLY OBSERVABLE ON THE SURFACE. LOCATION OF UNDERGROUND UTILITIES IS APPROXIMATE ONLY. WAS REQUESTED BY THE CLIENT, IS NOT INTENDED TO BE A COMPREHENSIVE DESCRIPTION OF EXISTING UTILITIES AND IS NOT WARRANTED TO BE CORRECT. NOR IS IT WARRANTED THAT ALL UTILITIES ARE SHOWN. THE CONTRACTOR SHALL PREPARE THE PROPOSED EXCAVATION AREA IN WHITE PAINT, AND CONTACT DOW SAFE AT (800) 344-7233 AT LEAST 72-HOURS PRIOR TO EXCAVATION. THE CONTRACTOR SHALL ALSO CONTACT ALL LOCAL UTILITIES, AND PROPERTY OWNERS AFFECTED.
3. THE CONTRACTOR SHALL COORDINATE THE RELOCATION OF UTILITIES AND SERVICES WITH THE UTILITY OWNER.
4. PRIOR TO BEGINNING WORK THE CONTRACTOR SHALL FIELD VERIFY EXISTING CONDITIONS INFORMATION AND REPORT ANY DISCREPANCIES BETWEEN THE PLANS AND THE ACTUAL CONDITIONS TO THE ENGINEER.
5. THE CONTRACTOR SHALL PROTECT ALL TRAVELED WAYS FROM DUST AND CONSTRUCTION DEBRIS AT ALL TIMES.
6. THE CONTRACTOR SHALL OBTAIN AND COMPLY WITH ALL LOCAL PERMITS.
7. THE CONTRACTOR SHALL PROVIDE TRAFFIC CONTROL IN ACCORDANCE WITH CURRENT MUTCD STANDARDS.
8. LOCATION OF THE DIGEST ELECTRIC, GAS AND WATER SYSTEMS TO BE DETERMINED DURING CONSTRUCTION.
9. IT SHALL BE THE RESPONSIBILITY OF THE CONTRACTOR TO RELOCATE ALL EXISTING UTILITIES WHICH CONFLICT WITH THE PROPOSED IMPROVEMENTS SHOWN ON THE PLAN.
10. THE CONTRACTOR SHALL BE RESPONSIBLE FOR ESTABLISHING AND MAINTAINING ALL CONTROL POINTS AND BENCH MARKS NECESSARY FOR THE WORK.
11. THE CONTRACTOR IS RESPONSIBLE FOR OBTAINING AND PAYING FOR ANY PERMITS AND/OR CONNECTION FEES REQUIRED TO CARRY OUT THE WORK.
12. THE CONTRACTOR IS RESPONSIBLE FOR VERIFYING THE CONDITIONS OF ALL EXISTING UTILITIES TO REMAIN AND REPLACE THEM AS REQUIRED, OR AS NEEDED.
13. TIBBETTS ENGINEERING CORP. ASSUMES NO RESPONSIBILITY FOR THESE PLANS FOR ACTUAL CONSTRUCTION WITHOUT THE USE OF APPROPRIATE CONSTRUCTION MATERIALS AND METHODS PREPARED BY TIBBETTS ENGINEERING CORP. AND WITHOUT A CONSTRUCTION PHASE FIELD OBSERVATION AND TESTING AGREEMENT SUFFICIENT TO TIBBETTS ENGINEERING CORP.

PLAN SET CONTENTS:

COVER SHEET.....	1
PROPOSED STRUCTURAL PLATE OPEN BOTTOM CULVERT.....	2
PROPOSED OPEN BOTTOM CULVERT DETAILS.....	3
EROSION & SEDIMENTATION CONTROL PLAN.....	4

Rev. Date Description By



Project Location

**Drift Road Over
Sam Tripp Brook
Westport, MA
(Bristol County)**

Prepared For

**Town of
Westport**

Drawing Title

**Cover
Sheet**

COPYRIGHT © 2012 TIBBETTS ENGINEERING CORP.
NO PART OF THIS DRAWING MAY BE REPRODUCED,
TRANSMITTED, OR STORED BY ANY MEANS, ELECTRONIC
OR MECHANICAL, WITHOUT THE EXPRESSED WRITTEN CONSENT
OF TIBBETTS ENGINEERING CORP. WITH THE EXCEPTION
OF ANY REGULATORY AUTHORITY WHICH MAY
REPRODUCE IT IN CONNECTION WITH THE
PERFORMANCE OF OFFICIAL BUSINESS UNDER ITS
JURISDICTION.


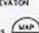
Drawn by: **SBS**
Checked by: **CMN**
Approved by: **CMN**
Project No.: **12029.031**
Date: **03-12-2012**

Drawing Number

1 of 4



LEGEND

EGP	EDGE OF PAVEMENT
--- 150 ---	EXISTING CONTOUR
--- D ---	DRAIN LINE
-----	APPROXIMATE PROPERTY LINE
Q UP	UTILITY POLE
P GP	GULF POLE
-----	MEAN ANNUAL HIGH WATER (MAHW)
-----	EDGE OF BORDERING VEGETATED WETLANDS (BVM)
SWW	STONE REINFORCED WALL
CWP	CORRUGATED METAL PIPE
DHW	OVERHEAD WIRE
%	SIGN
X	WETLAND FLAG
AL	BORDERING VEGETATED WETLANDS (BVM)
2,221	SPOT ELEVATION
	ASSESSORS
	

GENERAL NOTES:

- 1.) Conditions shown on the plan view are from a survey performed by Tibbets Engineering Corp. in June of 2011. Utilities shown are based on the field survey and available information and are not warranted to be correct or that all utilities are shown. The Contractor shall verify "Dig Safe" at least 72 hrs. in advance of any excavation work.
- 2.) Design Criteria shall be in accordance with AASHTO Standard Specifications for HS20-44 wheel loading.
- 3.) Benchmarks and Elevations provided are based on the Datum of 1929 representing Mean Sea Level = 0.0.
- 4.) In locations where evidence of scour or erosion has occurred the crest shall be improved by placing interlocking stone as directed by the Engineer.
- 5.) The Contractor shall review site soil conditions and report any unsuitable conditions to the Engineer and Town before proceeding with the installation of the culvert foundation. A single test pit was performed at the base of the culvert on the west side of the roadway that indicates the soils consist of Dark Brown Silty Clay with silty sand and siltstones and siltstones blended with fractured shale and organic matter to 46" deep.

Rev.	Date	Description	Dr.	Cr.
------	------	-------------	-----	-----



Project Location

**Drift Road Over
Sam Tripp Brook
Westport, Ma
(Bristol County)**

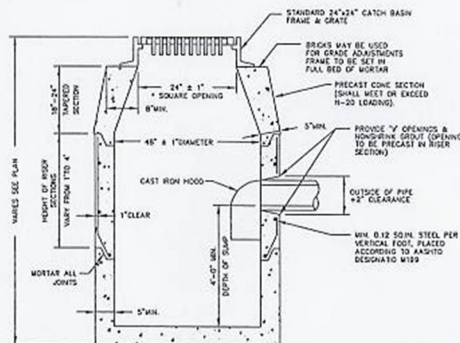
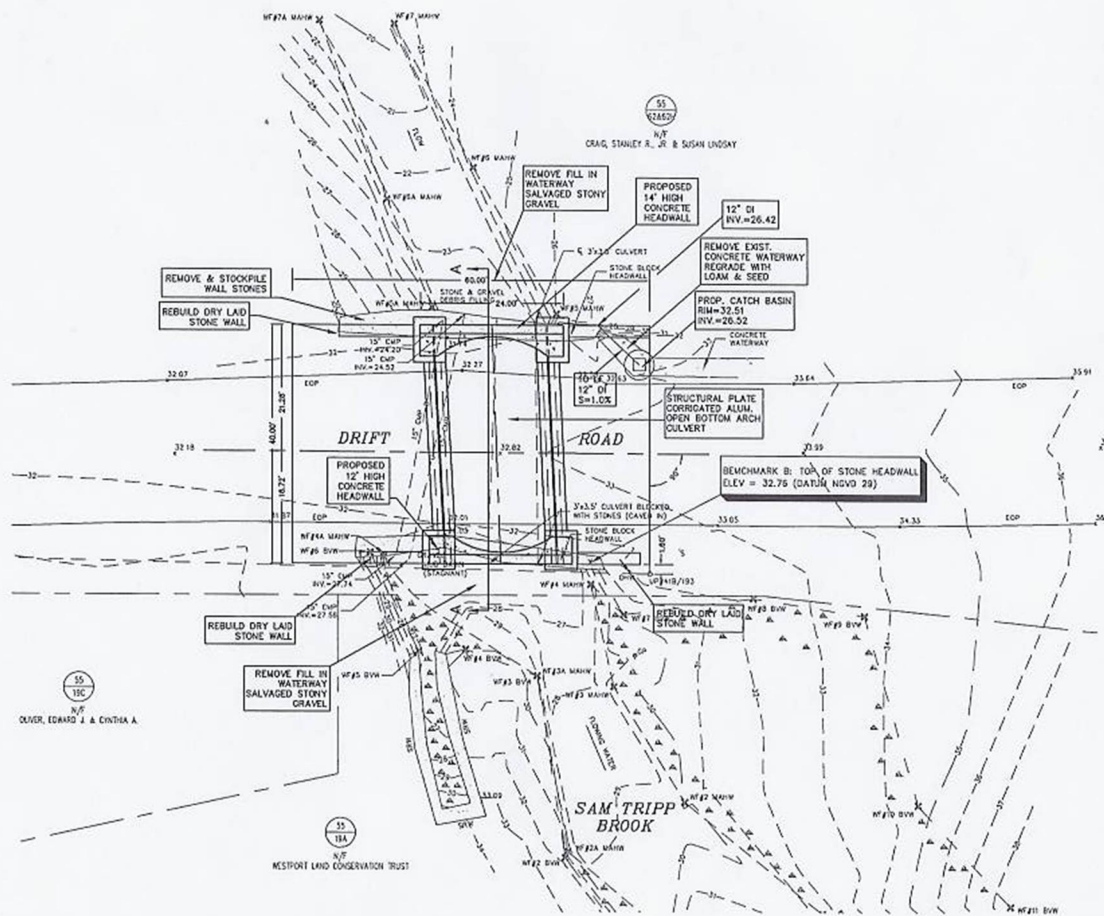
Prepared For
**Town Of
Westport**

Drawing Time

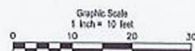
**Proposed
Structural Plate
Open Bottom
Culvert**

COPYRIGHT © 2012 TIBBETTS ENGINEERING CORP.
 NO PART OF THIS DRAWING MAY BE REPRODUCED
 TRANSMITTED, OR STORED BY ANY MEANS, WHAT-
 SOEVER, WITHOUT THE EXPRESSED WRITTEN
 CONSENT OF TIBBETTS ENGINEERING CORP. WITH
 THE EXCEPTION OF ANY REGULATORY AUTHORITY
 WHICH MAY REPRODUCE IT IN CONJUNCTION WITH
 THE PERFORMANCE OF OFFICIAL BUSINESS UNDER
 ITS JURISDICTION.

Drawn by:	CMW	Drawing Number 2 of 4
Design by:	CMW	
Reviewed by:	WPG	
Approved by:	GEB	
Project No:	12029.031	
Date:	03-12-2012	



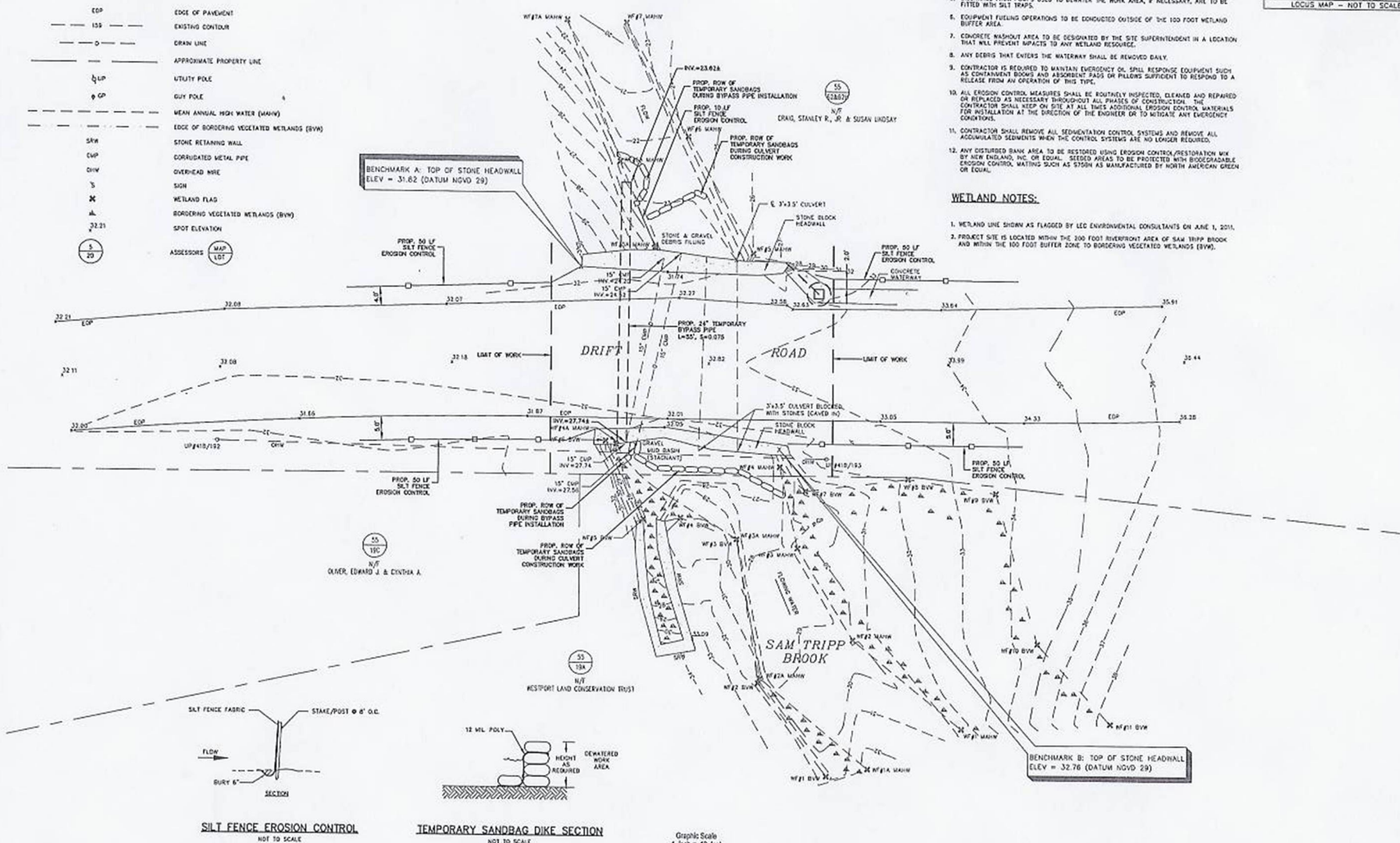
PRECAST CONCRETE CATCH BASIN
NOT TO SCALE





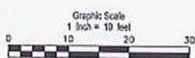
LEGEND

EDP	EDGE OF PAVEMENT
---	EXISTING CONTOUR
---	DRAIN LINE
---	APPROXIMATE PROPERTY LINE
UP	UTILITY POLE
GP	GUY POLE
---	MEAN ANNUAL HIGH WATER (MAHW)
---	EDGE OF BORDERING VEGETATED WETLANDS (BVW)
SW	STONE RETAINING WALL
CWP	CORRUGATED METAL PIPE
CHW	OVERHEAD WIRE
S	SIGN
W	WETLAND FLAG
W	BORDERING VEGETATED WETLANDS (BVW)
22.21	SPOT ELEVATION
20	ASSESSORS MAP LOT



SILT FENCE EROSION CONTROL
NOT TO SCALE

TEMPORARY SANDBAG DIKE SECTION
NOT TO SCALE



EROSION, SEDIMENTATION & POLLUTION CONTROL NOTES

- BEST MANAGEMENT PRACTICES (BMPs) AND CONTROLS SHALL CONFORM TO FEDERAL, STATE OR LOCAL REQUIREMENTS. CONTRACTOR SHALL IMPLEMENT ADDITIONAL CONTROLS AS REQUIRED/DIRECTED.
- EROSION AND SEDIMENTATION CONTROL MEASURES SHALL BE IN PLACE PRIOR TO THE COMMENCEMENT OF ANY SITE WORK OR EARTHWORK OPERATIONS. SHALL BE MAINTAINED AND SUITABLE DURING CONSTRUCTION AND SHALL REMAIN IN PLACE UNTIL ALL SITE WORK IS COMPLETE.
- ALL DISTURBED OR EXPOSED AREAS SUBJECT TO EROSION THAT WILL REMAIN SO FOR A PERIOD OF FOURTEEN (14) DAYS OR LONGER SHALL BE STABILIZED WITH MULCH OR OTHER APPROPRIATE MEANS.
- ANY STORM DRAIN RILETS SHALL BE PROTECTED FROM SILTATION IMPACTS BY APPROPRIATE MEANS.
- DISCHARGE FROM PUMPS USED TO Dewater THE WORK AREA, IF NECESSARY, ARE TO BE FITTED WITH SILT TRAPS.
- EQUIPMENT FUELING OPERATIONS TO BE CONDUCTED OUTSIDE OF THE 100 FOOT WETLAND BUFFER AREA.
- CONCRETE WASHOUT AREA TO BE DESIGNATED BY THE SITE SUPERINTENDENT IN A LOCATION THAT WILL PREVENT IMPACTS TO ANY WETLAND RESOURCE.
- ANY SEDIMENT THAT ENTERS THE WATERWAY SHALL BE REMOVED DAILY.
- CONTRACTOR IS REQUIRED TO MAINTAIN EMERGENCY OIL SPILL RESPONSE EQUIPMENT SUCH AS CONTAINMENT BOOMS AND ABSORBENT PADS ON PILES SUFFICIENT TO RESPOND TO A RELEASE FROM AN OPERATION OF THIS TYPE.
- ALL EROSION CONTROL MEASURES SHALL BE ROUTINELY INSPECTED, CLEANED AND REPAIRED OR REPLACED AS NECESSARY THROUGHOUT ALL PHASES OF CONSTRUCTION. THE CONTRACTOR SHALL KEEP ON SITE AT ALL TIMES ADDITIONAL EROSION CONTROL MATERIALS FOR INSTALLATION AT THE DISCRETION OF THE ENGINEER OR TO MITIGATE ANY EMERGENCY CONDITIONS.
- CONTRACTOR SHALL REMOVE ALL SEDIMENTATION CONTROL SYSTEMS AND REMOVE ALL ACCUMULATED SEDIMENTS WHEN THE CONTROL SYSTEMS ARE NO LONGER REQUIRED.
- ANY DISTURBED BANK AREA TO BE RESTORED USING EROSION CONTROL/RESTORATION MIX BY NEW ENGLAND, INC. OR EQUAL. SEEDING AREAS TO BE PROTECTED WITH BIOGRADABLE EROSION CONTROL MATING SUCH AS STYON AS MANUFACTURED BY NORTH AMERICAN GREEN OR EQUAL.

WETLAND NOTES:

- WETLAND LINE SHOWN AS FLAGGED BY DEC ENVIRONMENTAL CONSULTANTS ON JUNE 1, 2011.
- PROJECT SITE IS LOCATED WITHIN THE 200 FOOT RIVERFRONT AREA OF SAM TRIPP BROOK AND WITHIN THE 100 FOOT BUFFER ZONE TO BORDERING VEGETATED WETLANDS (BVW).



tec tibbetts engineering corp
718 COUNTY STREET, TAUNTON, MA 01969
401.259.1000 • fax 401.259.1001
civil engineering
land surveying
transportation
environmental permitting
testing & construction services



Project Location

Drift Road Over
Sam Tripp Brook
Westport, Ma
(Bristol County)

Prepared For

Town Of
Westport

Drawing Title

**Erosion &
Sedimentation
Control Plan**

COPYRIGHT © 2012 TIBBETTS ENGINEERING CORP
NO PART OF THIS DRAWING MAY BE REPRODUCED,
TRANSMITTED, OR STORED BY ANY MEANS, WHAT-
SOEVER, WITHOUT THE EXPRESSED WRITTEN
CONSENT OF TIBBETTS ENGINEERING CORP. WITH
THE EXCEPTION OF ANY REGULATORY AUTHORITY
WHICH MAY REPRODUCE IT IN CONJUNCTION WITH
THE PERFORMANCE OF OFFICIAL BUSINESS UNDER
THIS JURISDICTION.

Drawn by: SRS
Design by: SRS
Reviewed by: CNW
Approved by: CNW
Project No: 12029.031
Date: 03-12-2012

Drawing Number

4 of 4