

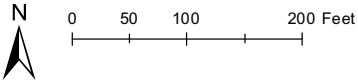
# Stormwater Treatment Design Potential Sites

Besse Park  
Wareham

- ★ Discharges
- + Catchbasins
- Manholes
- TreatmentPoint
- Pipes
- Contours (5ft)
- Soil Hydrologic Group**
  - A
  - A/D
  - B
  - B/D
  - C
  - D
- Drainage Class**
  - Excessively drained
  - Somewhat excessively drained
  - Well drained
  - Moderately well drained
  - Somewhat poorly drained
  - Poorly drained
  - Very poorly drained
  - Potential Town Use Land
- Flood Hazard and Wetlands**
  - A, AE, AH, or AO: 1% Annual Chance
  - VE: High Risk Coastal Area
  - DEP Wetlands



Map composed by Buzzards  
Bay National Estuary Program  
6 March 2020



Facility ID: WWA1351PI

Notes: Catchment includes parts of Main St, Cedar St, paved and unpaved parking areas. Town land available.



Hydrologic Group



Drainage Class and Town Use Land



Flood Hazard and Wetlands

# Stormwater Treatment Design Potential Sites

Tempest Knob  
Wareham

- ★ Discharges
- + Catchbasins
- Manholes
- TreatmentPoint
- Pipes
- Contours (5ft)
- Soil Hydrologic Group**
  - A
  - A/D
  - B
  - B/D
  - C
  - D
- Drainage Class**
  - Excessively drained
  - Somewhat excessively drained
  - Well drained
  - Moderately well drained
  - Somewhat poorly drained
  - Poorly drained
  - Very poorly drained
  - Potential Town Use Land
- Flood Hazard and Wetlands**
  - A, AE, AH, or AO: 1% Annual Chance
  - VE: High Risk Coastal Area
  - DEP Wetlands



Map composed by Buzzards  
Bay National Estuary Program  
6 March 2020



0 50 100 200 Feet

Facility ID: WWA1102PI

Notes: Catchment includes part of Oak St, Oak Terrace, and paved parking areas. Town land available.



Hydrologic Group



Drainage Class and Town Use Land



Flood Hazard and Wetlands

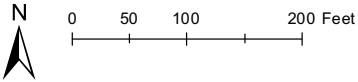


# Stormwater Treatment Design Potential Sites Springhill Road Wareham

- ★ Discharges
- ⊕ Catchbasins
- Manholes
- TreatmentPoint
- Pipes
- Contours (5ft)
- Soil Hydrologic Group**
  - A
  - A/D
  - B
  - B/D
  - C
  - D
- Drainage Class**
  - Excessively drained
  - Somewhat excessively drained
  - Well drained
  - Moderately well drained
  - Somewhat poorly drained
  - Poorly drained
  - Very poorly drained
  - Potential Town Use Land
- Flood Hazard and Wetlands**
  - A, AE, AH, or AO: 1% Annual Chance
  - VE: High Risk Coastal Area
  - DEP Wetlands

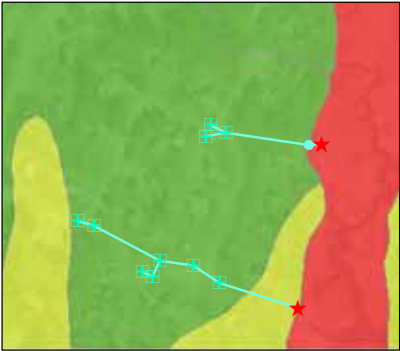


Map composed by Buzzards  
Bay National Estuary Program  
6 March 2020

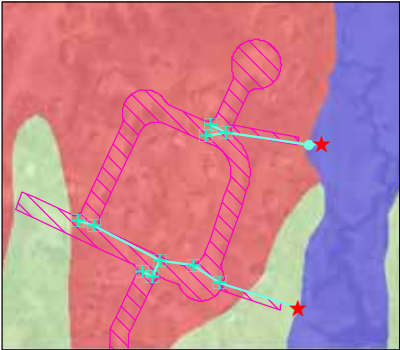


Facility ID: WWE1018PI

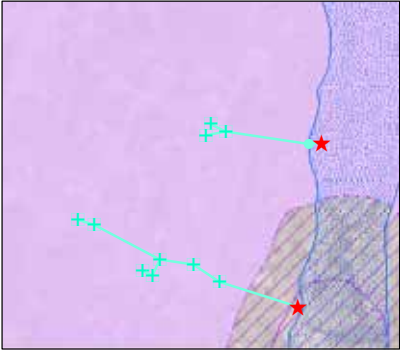
Notes: Catchment includes Springhill Rd, Winslow Ln, and part of Fairfield Dr.



Hydrologic Group



Drainage Class and Town Use Land



Flood Hazard and Wetlands

# Stormwater Treatment Design Potential Sites

Independence Lane  
Wareham

- ★ Discharges
- + Catchbasins
- Manholes
- Treatment Point
- Pipes
- Contours (5ft)
- Soil Hydrologic Group**
  - A
  - A/D
  - B
  - B/D
  - C
  - D
- Drainage Class**
  - Excessively drained
  - Somewhat excessively drained
  - Well drained
  - Moderately well drained
  - Somewhat poorly drained
  - Poorly drained
  - Very poorly drained
  - Potential Town Use Land
- Flood Hazard and Wetlands**
  - A, AE, AH, or AO: 1% Annual Chance
  - VE: High Risk Coastal Area
  - DEP Wetlands



Map composed by Buzzards  
Bay National Estuary Program  
6 March 2020



0 50 100 200 Feet

Facility ID: ONB1036PI

Notes: Catchment includes Independence Ln and parking area. Possibly Chubbuck Ln.



Hydrologic Group



Drainage Class and Town Use Land



Flood Hazard and Wetlands



# Stormwater Treatment Design Potential Sites

## River Street Park Acushnet

- ★ Discharges
- + Catchbasins
- Manholes
- Treatment Point
- Pipes
- Contours (5ft)
- Soil Hydrologic Group**
  - A
  - A/D
  - B
  - B/D
  - C
  - D
- Drainage Class**
  - Excessively drained
  - Somewhat excessively drained
  - Well drained
  - Moderately well drained
  - Somewhat poorly drained
  - Poorly drained
  - Very poorly drained
  - Potential Town Use Land
- Flood Hazard and Wetlands**
  - A, AE, AH, or AO: 1% Annual Chance
  - VE: High Risk Coastal Area
  - DEP Wetlands



Map composed by Buzzards Bay National Estuary Program  
6 March 2020



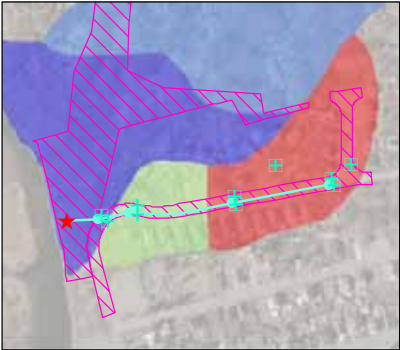
0 50 100 200 Feet

Facility ID: AIH1025PI

Notes: Catchment includes Guillette St and part of River St. Town land available.



Hydrologic Group



Drainage Class and Town Use Land



Flood Hazard and Wetlands

Stormwater Treatment  
Design Potential Sites  
Cherry Street  
Fairhaven

- ★ Discharges
- + Catchbasins
- Manholes
- TreatmentPoint
- Pipes
- Contours (5ft)
- Soil Hydrologic Group**
  - A
  - A/D
  - B
  - B/D
  - C
  - D
- Drainage Class**
  - Excessively drained
  - Somewhat excessively drained
  - Well drained
  - Moderately well drained
  - Somewhat poorly drained
  - Poorly drained
  - Very poorly drained
  - Potential Town Use Land
- Flood Hazard and Wetlands**
  - A, AE, AH, or AO: 1% Annual Chance
  - VE: High Risk Coastal Area
  - DEP Wetlands



Map composed by Buzzards  
Bay National Estuary Program  
6 March 2020



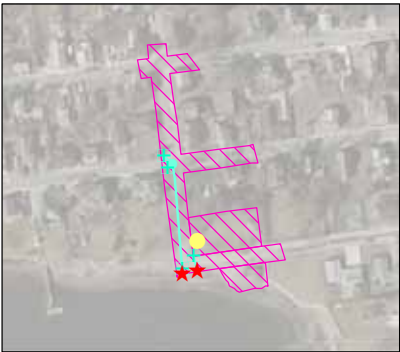
0 50 100 200 Feet

Facility ID: FIH1130PI

Notes: Catchment includes Cherry St and part of Pilgrim Ave. Town land available.



Hydrologic Group



Drainage Class and Town Use Land



Flood Hazard and Wetlands



Stormwater Treatment  
Design Potential Sites  
Church Street  
Fairhaven

- ★ Discharges
- + Catchbasins
- Manholes
- Treatment Point
- Pipes
- Contours (5ft)
- Soil Hydrologic Group**
  - A
  - A/D
  - B
  - B/D
  - C
  - D
- Drainage Class**
  - Excessively drained
  - Somewhat excessively drained
  - Well drained
  - Moderately well drained
  - Somewhat poorly drained
  - Poorly drained
  - Very poorly drained
  - Potential Town Use Land
- Flood Hazard and Wetlands**
  - A, AE, AH, or AO: 1% Annual Chance
  - VE: High Risk Coastal Area
  - DEP Wetlands



Map composed by Buzzards  
Bay National Estuary Program  
6 March 2020



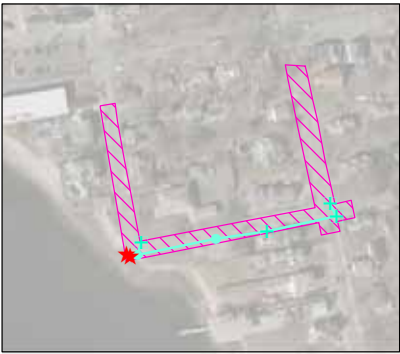
0 50 100 200 Feet

Facility ID: FIH1071PI

Notes: Catchment includes parts of Main St and Church St.



Hydrologic Group



Drainage Class and Town Use Land



Flood Hazard and Wetlands

# Stormwater Treatment Design Potential Sites

Jerusalem Road  
Fairhaven

- ★ Discharges
- + Catchbasins
- Manholes
- TreatmentPoint
- Pipes
- Contours (5ft)
- Soil Hydrologic Group**
  - A
  - A/D
  - B
  - B/D
  - C
  - D
- Drainage Class**
  - Excessively drained
  - Somewhat excessively drained
  - Well drained
  - Moderately well drained
  - Somewhat poorly drained
  - Poorly drained
  - Very poorly drained
  - Potential Town Use Land
- Flood Hazard and Wetlands**
  - A, AE, AH, or AO: 1% Annual Chance
  - VE: High Risk Coastal Area
  - DEP Wetlands



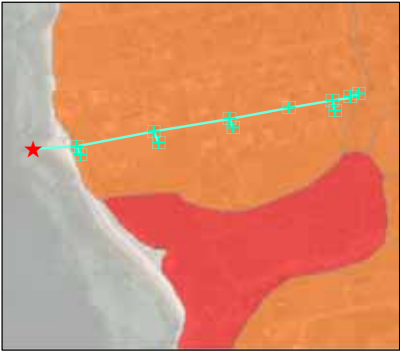
Map composed by Buzzards  
Bay National Estuary Program  
6 March 2020



0 50 100 200 Feet

Facility ID: FIH1013PI

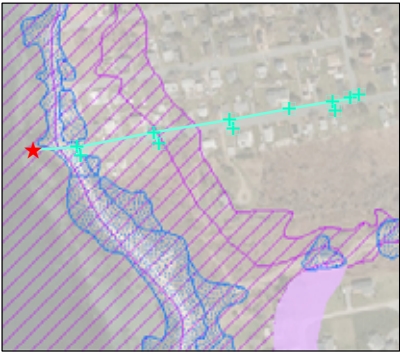
Notes: Catchment includes most of Jerusalem Rd.



Hydrologic Group



Drainage Class and Town Use Land



Flood Hazard and Wetlands



# Stormwater Treatment Design Potential Sites

Tradewind Lane  
Dartmouth

- ★ Discharges
- + Catchbasins
- Manholes
- TreatmentPoint
- Pipes
- Contours (5ft)
- Soil Hydrologic Group**
  - A
  - A/D
  - B
  - B/D
  - C
  - D
- Drainage Class**
  - Excessively drained
  - Somewhat excessively drained
  - Well drained
  - Moderately well drained
  - Somewhat poorly drained
  - Poorly drained
  - Very poorly drained
  - Potential Town Use Land
- Flood Hazard and Wetlands**
  - A, AE, AH, or AO: 1% Annual Chance
  - VE: High Risk Coastal Area
  - DEP Wetlands



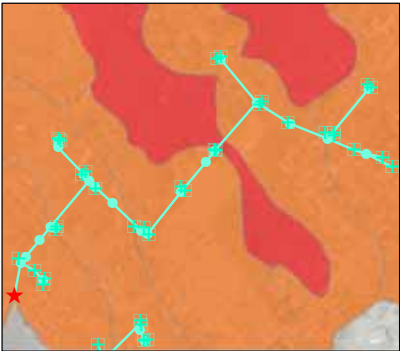
Map composed by Buzzards  
Bay National Estuary Program  
6 March 2020



0 50 100 200 Feet

Facility ID: APB1059PI

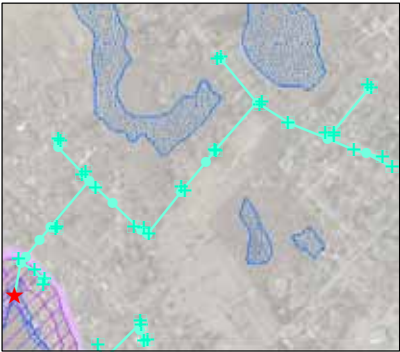
Notes: Catchment includes Mayfair St, Elm St, Captains Ln, Memorial Ave, and part of Rockland St. Town land available.



Hydrologic Group



Drainage Class and Town Use Land



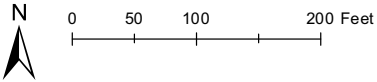
Flood Hazard and Wetlands

# Stormwater Treatment Design Potential Sites Highland Street Dartmouth

- ★ Discharges
- ⊕ Catchbasins
- Manholes
- TreatmentPoint
- Pipes
- Contours (5ft)
- Soil Hydrologic Group**
  - A
  - A/D
  - B
  - B/D
  - C
  - D
- Drainage Class**
  - Excessively drained
  - Somewhat excessively drained
  - Well drained
  - Moderately well drained
  - Somewhat poorly drained
  - Poorly drained
  - Very poorly drained
  - Potential Town Use Land
- Flood Hazard and Wetlands**
  - A, AE, AH, or AO: 1% Annual Chance
  - VE: High Risk Coastal Area
  - DEP Wetlands

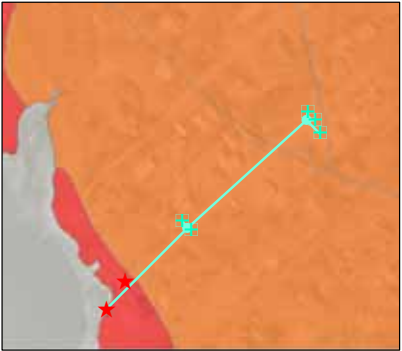


Map composed by Buzzards  
Bay National Estuary Program  
6 March 2020

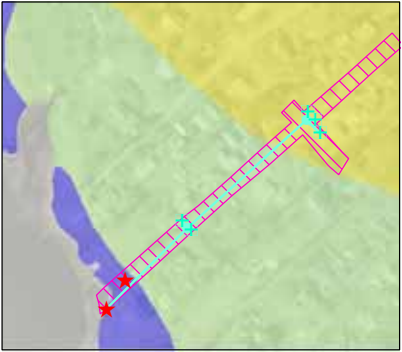


Facility ID: APB1079PI

Notes: Catchment includes Highland St and part of Wilson St.



Hydrologic Group



Drainage Class and Town Use Land



Flood Hazard and Wetlands



# Stormwater Treatment Design Potential Sites

Water Street  
Dartmouth

- ★ Discharges
- + Catchbasins
- Manholes
- TreatmentPoint
- Pipes
- Contours (5ft)
- Soil Hydrologic Group**
  - A
  - A/D
  - B
  - B/D
  - C
  - D
- Drainage Class**
  - Excessively drained
  - Somewhat excessively drained
  - Well drained
  - Moderately well drained
  - Somewhat poorly drained
  - Poorly drained
  - Very poorly drained
  - Potential Town Use Land
- Flood Hazard and Wetlands**
  - A, AE, AH, or AO: 1% Annual Chance
  - VE: High Risk Coastal Area
  - DEP Wetlands



Map composed by Buzzards  
Bay National Estuary Program  
6 March 2020



0 50 100 200 Feet

Facility ID: APB1146PI

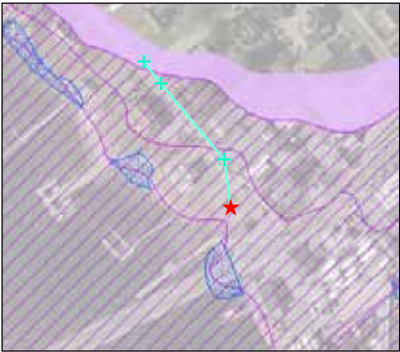
Notes: Catchment includes part of Water St. Town land available.



Hydrologic Group



Drainage Class and Town Use Land



Flood Hazard and Wetlands

# Stormwater Treatment Design Potential Sites

Howland Avenue  
Dartmouth

- ★ Discharges
- + Catchbasins
- Manholes
- TreatmentPoint
- Pipes
- Contours (5ft)
- Soil Hydrologic Group**
  - A
  - A/D
  - B
  - B/D
  - C
  - D
- Drainage Class**
  - Excessively drained
  - Somewhat excessively drained
  - Well drained
  - Moderately well drained
  - Somewhat poorly drained
  - Poorly drained
  - Very poorly drained
  - Potential Town Use Land
- Flood Hazard and Wetlands**
  - A, AE, AH, or AO: 1% Annual Chance
  - VE: High Risk Coastal Area
  - DEP Wetlands



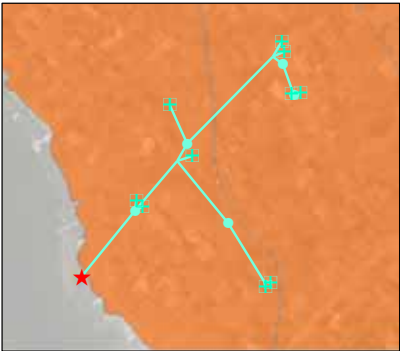
Map composed by Buzzards  
Bay National Estuary Program  
6 March 2020



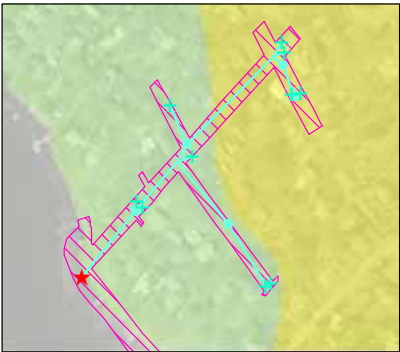
0 50 100 200 Feet

Facility ID: APB1052PI

Notes: Catchment includes Howland Ave, part of Clarence St, and part of Wilson St.



Hydrologic Group



Drainage Class and Town Use Land



Flood Hazard and Wetlands



Stormwater Treatment  
Design Potential Sites  
Elm Street  
Dartmouth

- ★ Discharges
- ⊕ Catchbasins
- Manholes
- TreatmentPoint
- Pipes
- Contours (5ft)
- Soil Hydrologic Group**
  - A
  - A/D
  - B
  - B/D
  - C
  - D
- Drainage Class**
  - Excessively drained
  - Somewhat excessively drained
  - Well drained
  - Moderately well drained
  - Somewhat poorly drained
  - Poorly drained
  - Very poorly drained
  - Potential Town Use Land
- Flood Hazard and Wetlands**
  - A, AE, AH, or AO: 1% Annual Chance
  - VE: High Risk Coastal Area
  - DEP Wetlands



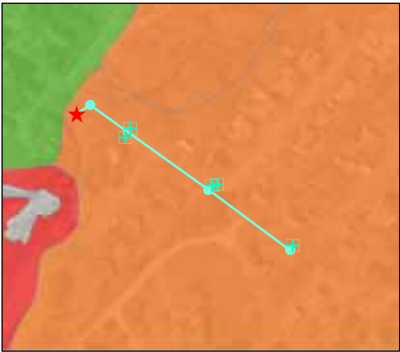
Map composed by Buzzards  
Bay National Estuary Program  
6 March 2020



0 50 100 200 Feet

Facility ID: APB1081PI

Notes: Stormwater pipe discharges into road culvert. Catchment includes part of Elm St. Adjacent to DNR land.



Hydrologic Group



Drainage Class and Town Use Land



Flood Hazard and Wetlands

Stormwater Treatment  
Design Potential Sites

Foster Street  
Mattapoissett

- ★ Discharges
- + Catchbasins
- Manholes
- TreatmentPoint
- Pipes
- Contours (5ft)
- Soil Hydrologic Group**
  - A
  - A/D
  - B
  - B/D
  - C
  - D
- Drainage Class**
  - Excessively drained
  - Somewhat excessively drained
  - Well drained
  - Moderately well drained
  - Somewhat poorly drained
  - Poorly drained
  - Very poorly drained
  - Potential Town Use Land
- Flood Hazard and Wetlands**
  - A, AE, AH, or AO: 1% Annual Chance
  - VE: High Risk Coastal Area
  - DEP Wetlands



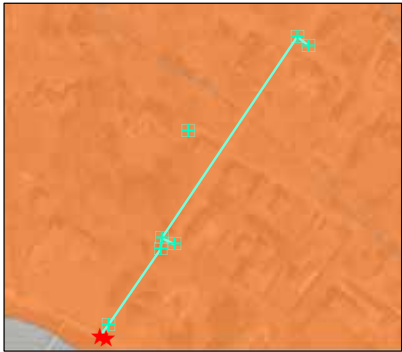
Map composed by Buzzards  
Bay National Estuary Program  
6 March 2020



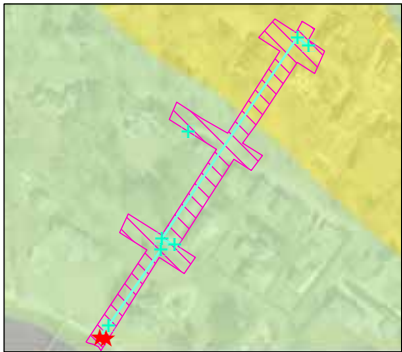
0 50 100 200 Feet

Facility ID: TMR1031PI

Notes: Catchment includes Foster St. High Nitrates. Town land available.



Hydrologic Group



Drainage Class and Town Use Land



Flood Hazard and Wetlands



Stormwater Treatment  
Design Potential Sites

Brant Beach  
Mattapoissett

- ★ Discharges
- + Catchbasins
- Manholes
- Treatment Point
- Pipes
- Contours (5ft)
- Soil Hydrologic Group**
  - A
  - A/D
  - B
  - B/D
  - C
  - D
- Drainage Class**
  - Excessively drained
  - Somewhat excessively drained
  - Well drained
  - Moderately well drained
  - Somewhat poorly drained
  - Poorly drained
  - Very poorly drained
  - Potential Town Use Land
- Flood Hazard and Wetlands**
  - A, AE, AH, or AO: 1% Annual Chance
  - VE: High Risk Coastal Area
  - DEP Wetlands



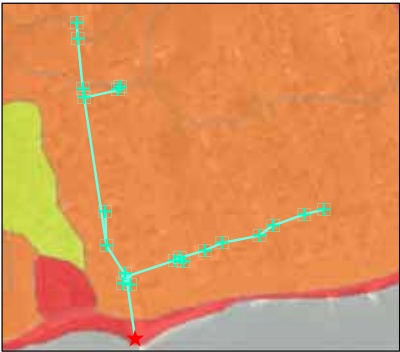
Map composed by Buzzards  
Bay National Estuary Program  
6 March 2020



0 50 100 200 Feet

Facility ID: TMR1014PI

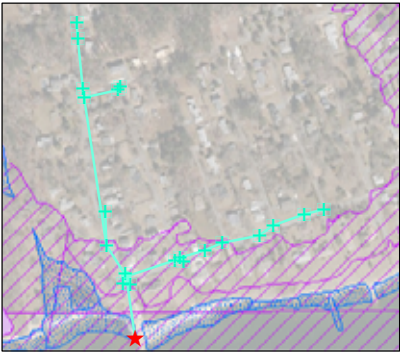
Notes: Catchment includes part of Brant Beach Ave, part of Highland Ave, and part of Ocean View Ave. Town land available.



Hydrologic Group



Drainage Class and Town Use Land



Flood Hazard and Wetlands